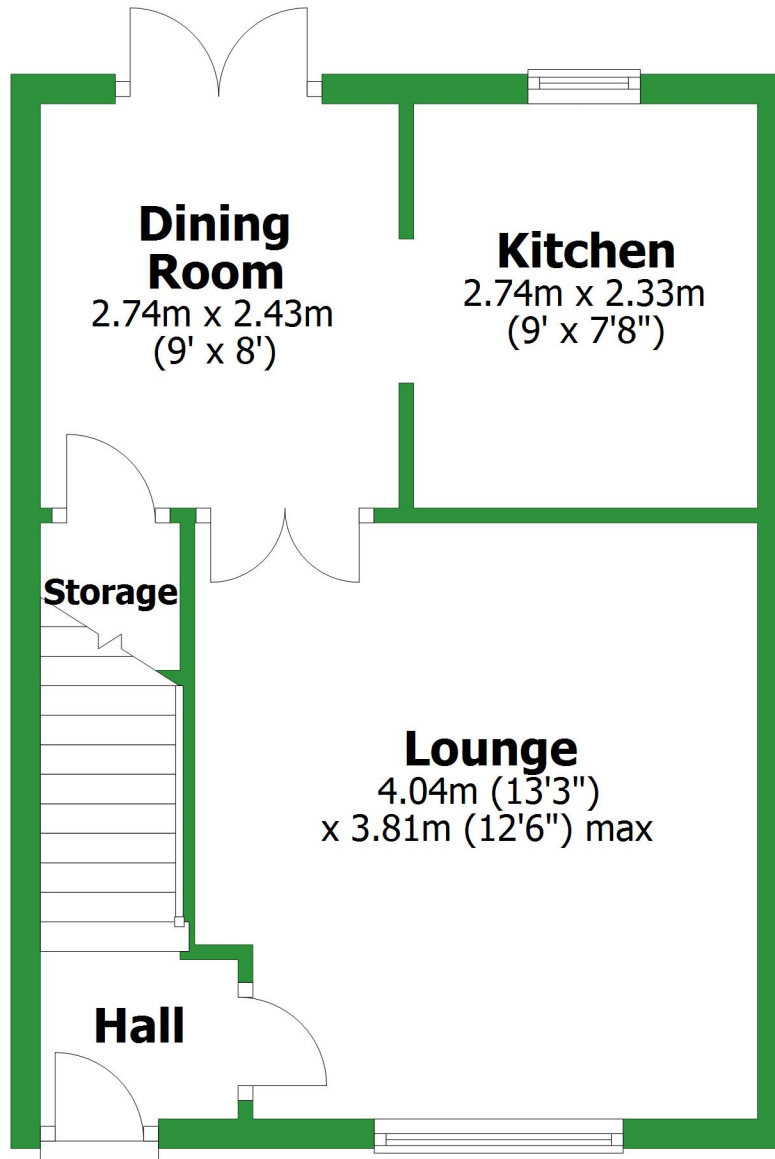


# Ground Floor

Approx. 33.4 sq. metres (359.9 sq. feet)



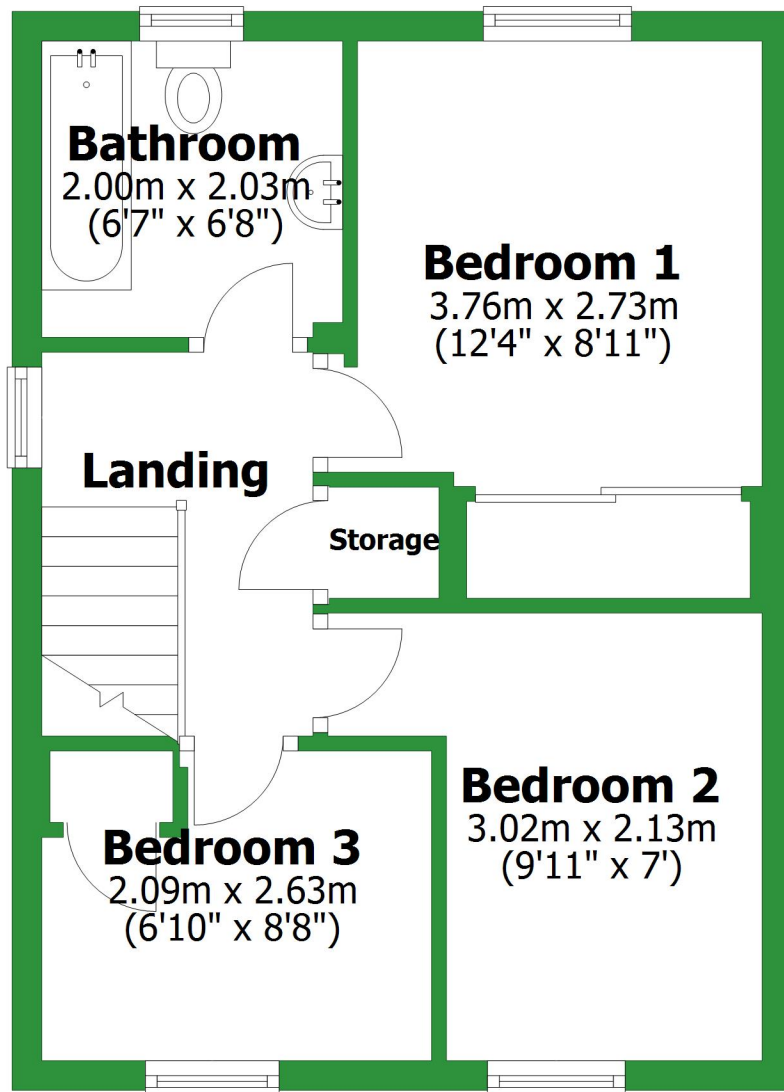
Total area: approx. 66.9 sq. metres (719.8 sq. feet)

For illustrative purposes only. Not to scale. All sizes are approximate.

Plan produced using PlanUp.

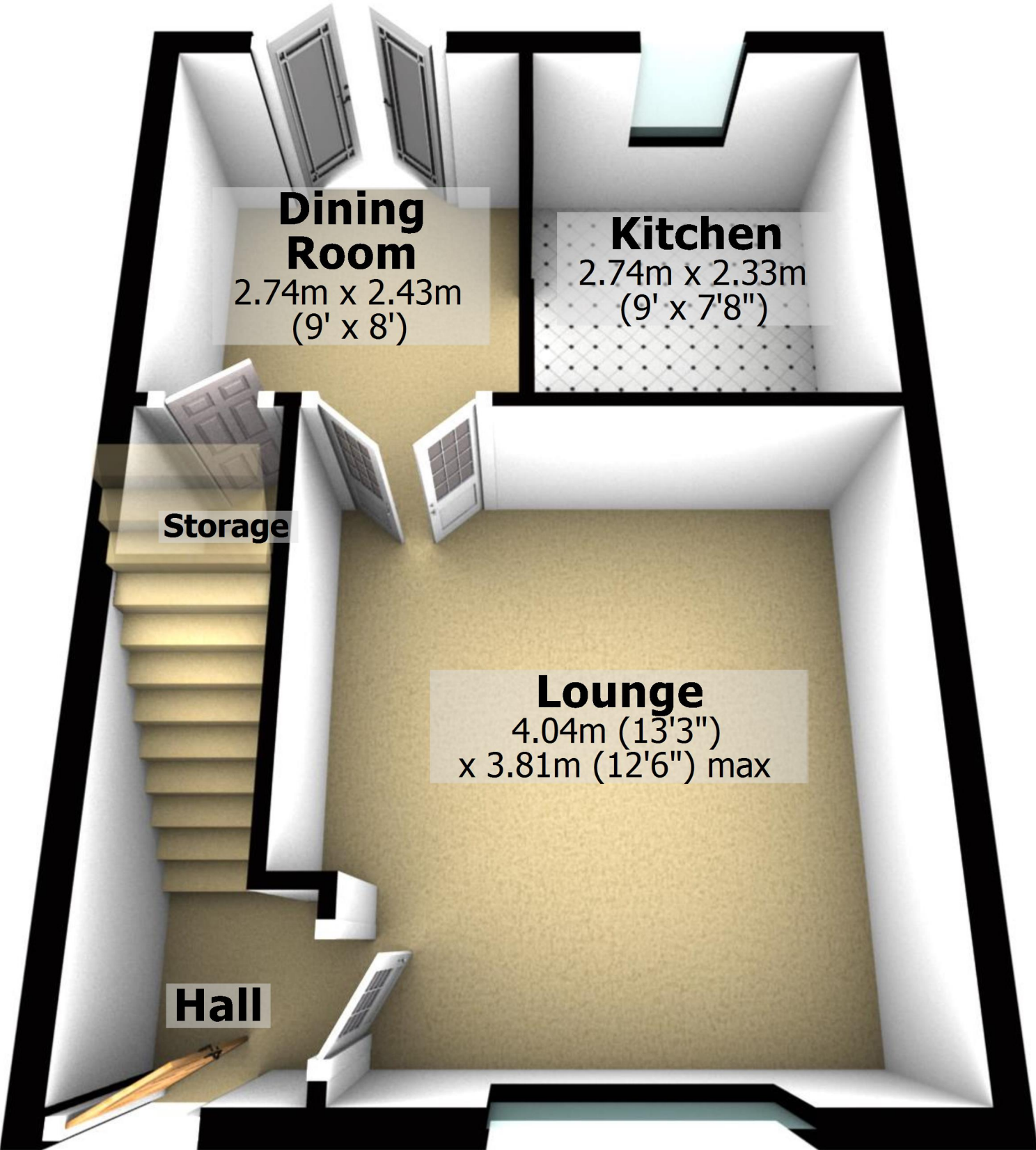
# First Floor

Approx. 33.4 sq. metres (359.9 sq. feet)



# Ground Floor

Approx. 33.4 sq. metres (359.9 sq. feet)



Total area: approx. 66.9 sq. metres (719.8 sq. feet)

For illustrative purposes only. Not to scale. All sizes are approximate.

Plan produced using PlanUp.

# First Floor

Approx. 33.4 sq. metres (359.9 sq. feet)

## Bathroom

2.00m x 2.03m  
(6'7" x 6'8")

## Bedroom 1

3.76m x 2.73m  
(12'4" x 8'11")

## Landing

Storage

## Bedroom 2

3.02m x 2.13m  
(9'11" x 7')

## Bedroom 3

2.09m x 2.63m  
(6'10" x 8'8")

