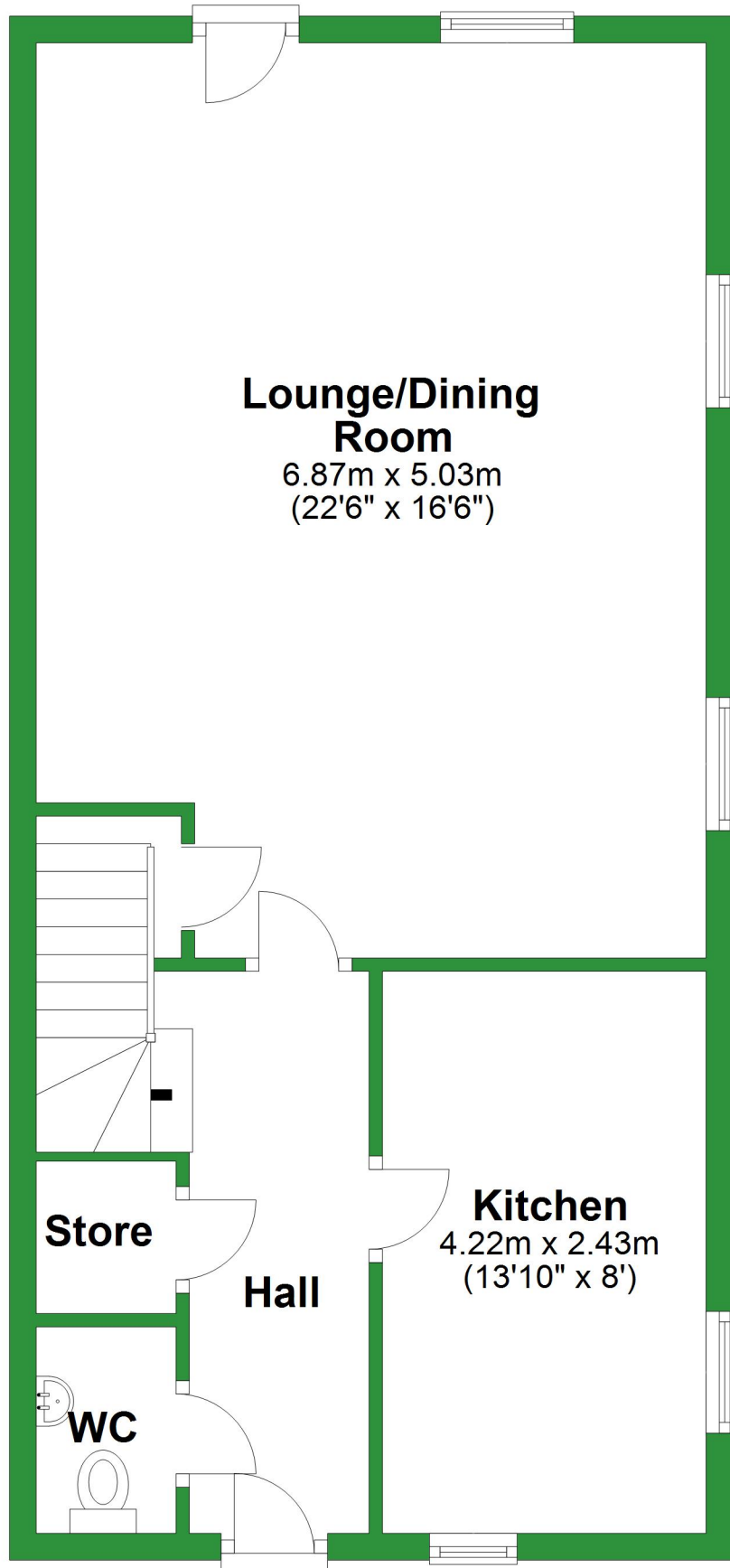


# Ground Floor

Approx. 56.3 sq. metres (605.9 sq. feet)

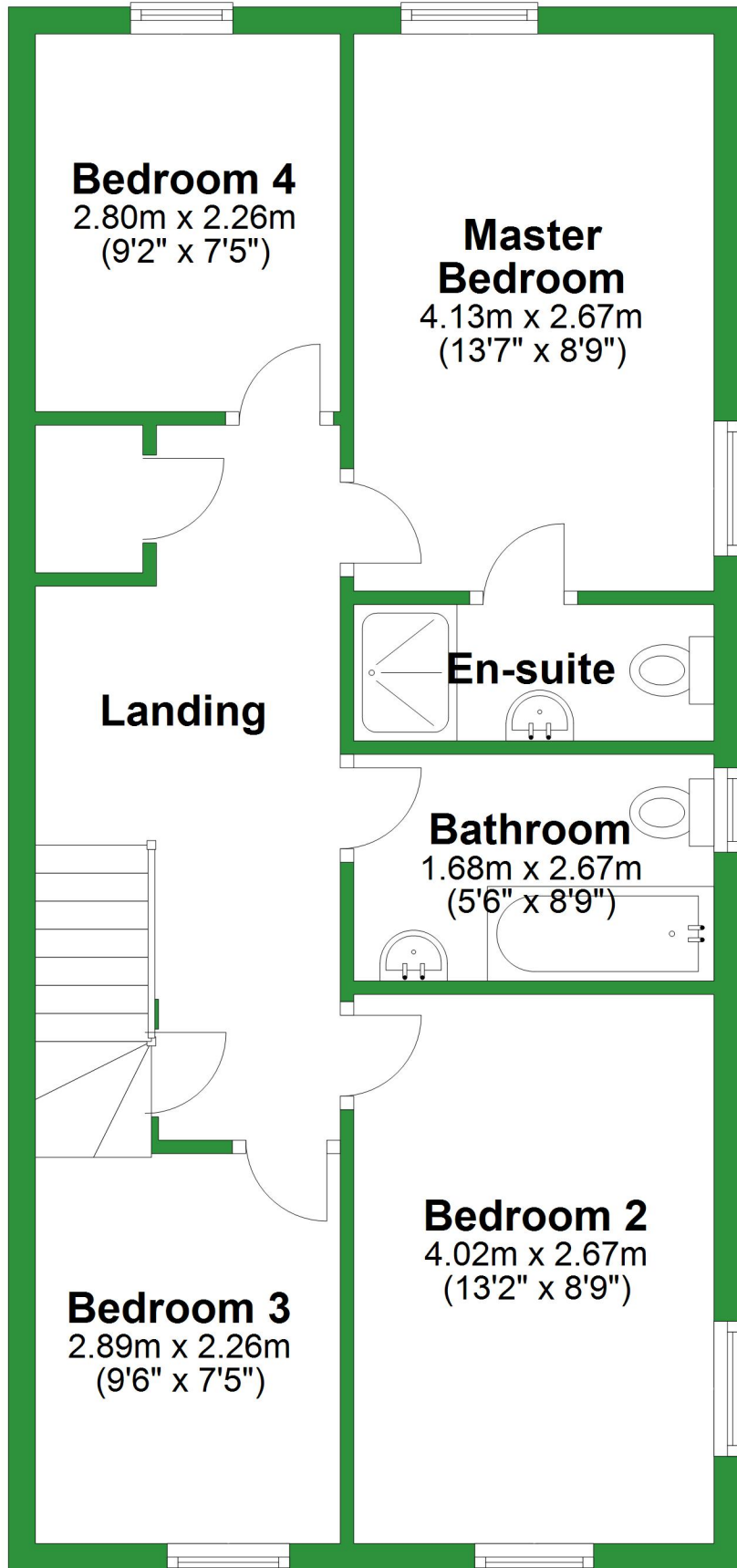


Total area: approx. 112.6 sq. metres (1211.7 sq. feet)

For illustrative purposes only. Not to scale. All sizes are approximate.  
Plan produced using PlanUp.

# First Floor

Approx. 56.3 sq. metres (605.9 sq. feet)



# Ground Floor

Approx. 56.3 sq. metres (605.9 sq. feet)

## Lounge/Dining Room

6.87m x 5.03m  
(22'6" x 16'6")

Store

Hall

## Kitchen

4.22m x 2.43m  
(13'10" x 8')

WC

Total area: approx. 112.6 sq. metres (1211.7 sq. feet)

For illustrative purposes only. Not to scale. All sizes are approximate.

Plan produced using PlanUp.

# First Floor

Approx. 56.3 sq. metres (605.9 sq. feet)

