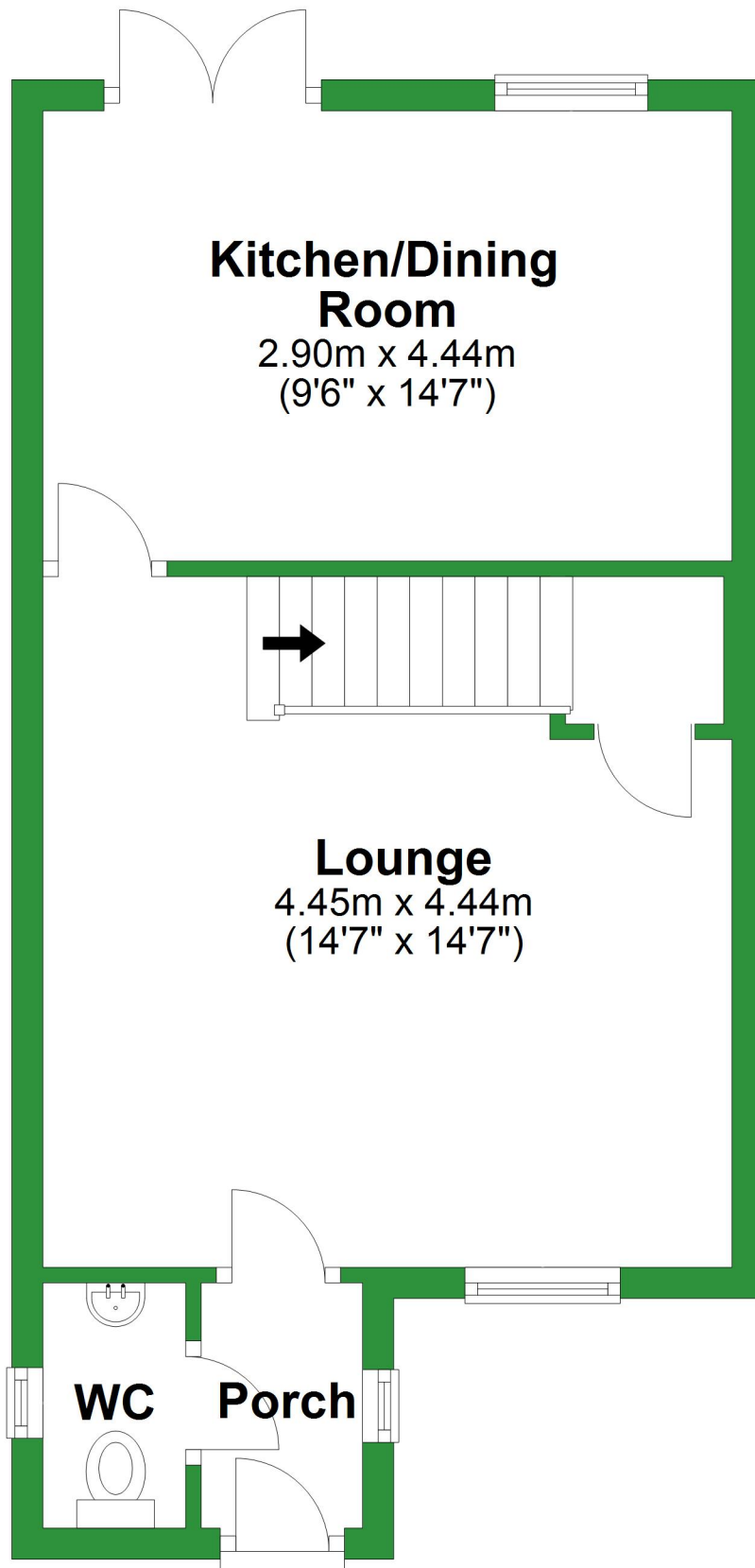


# Ground Floor

Approx. 36.5 sq. metres (393.3 sq. feet)

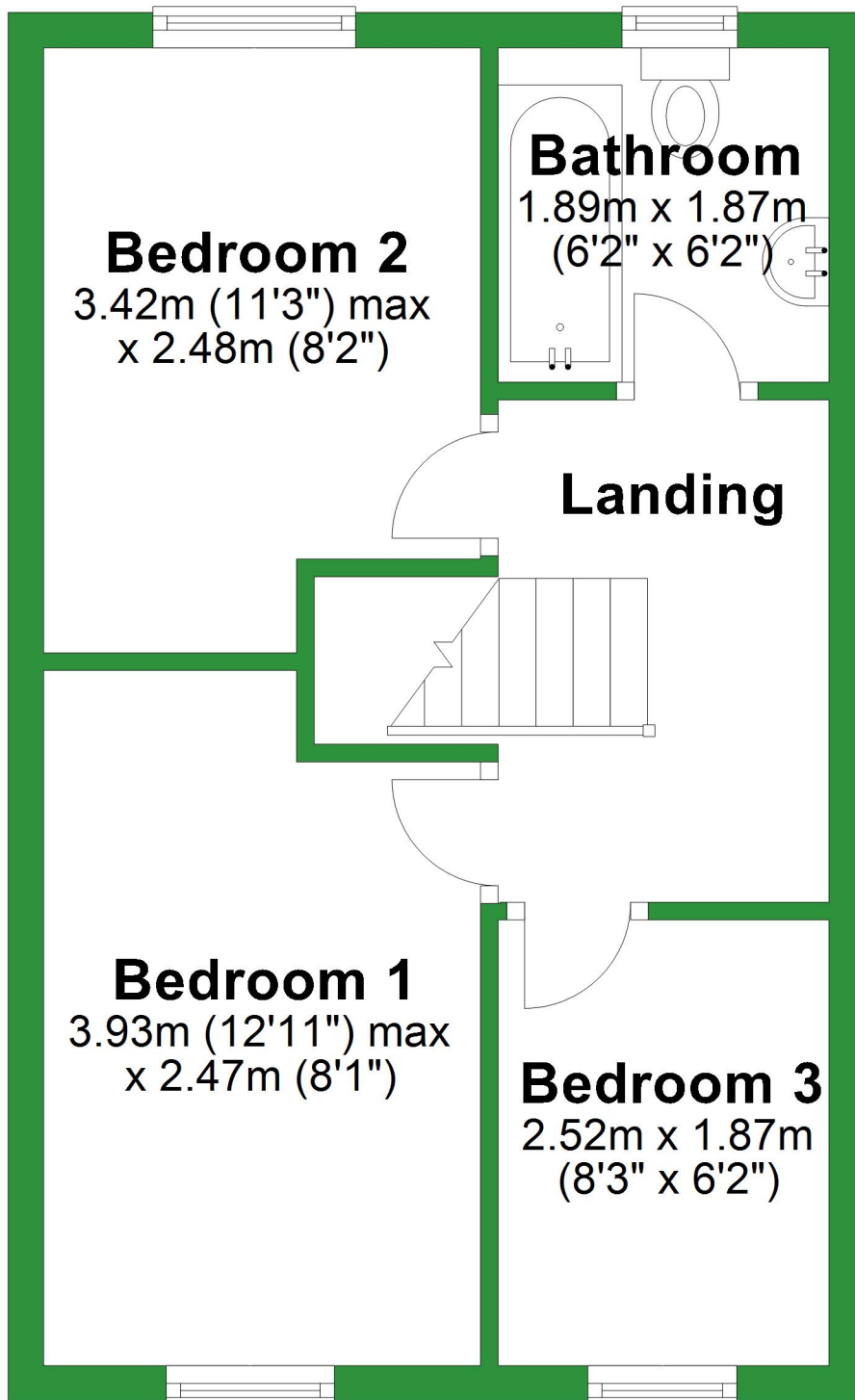


Total area: approx. 69.6 sq. metres (749.5 sq. feet)

For illustrative purposes only. Not to scale. All sizes are approximate.  
Plan produced using PlanUp.

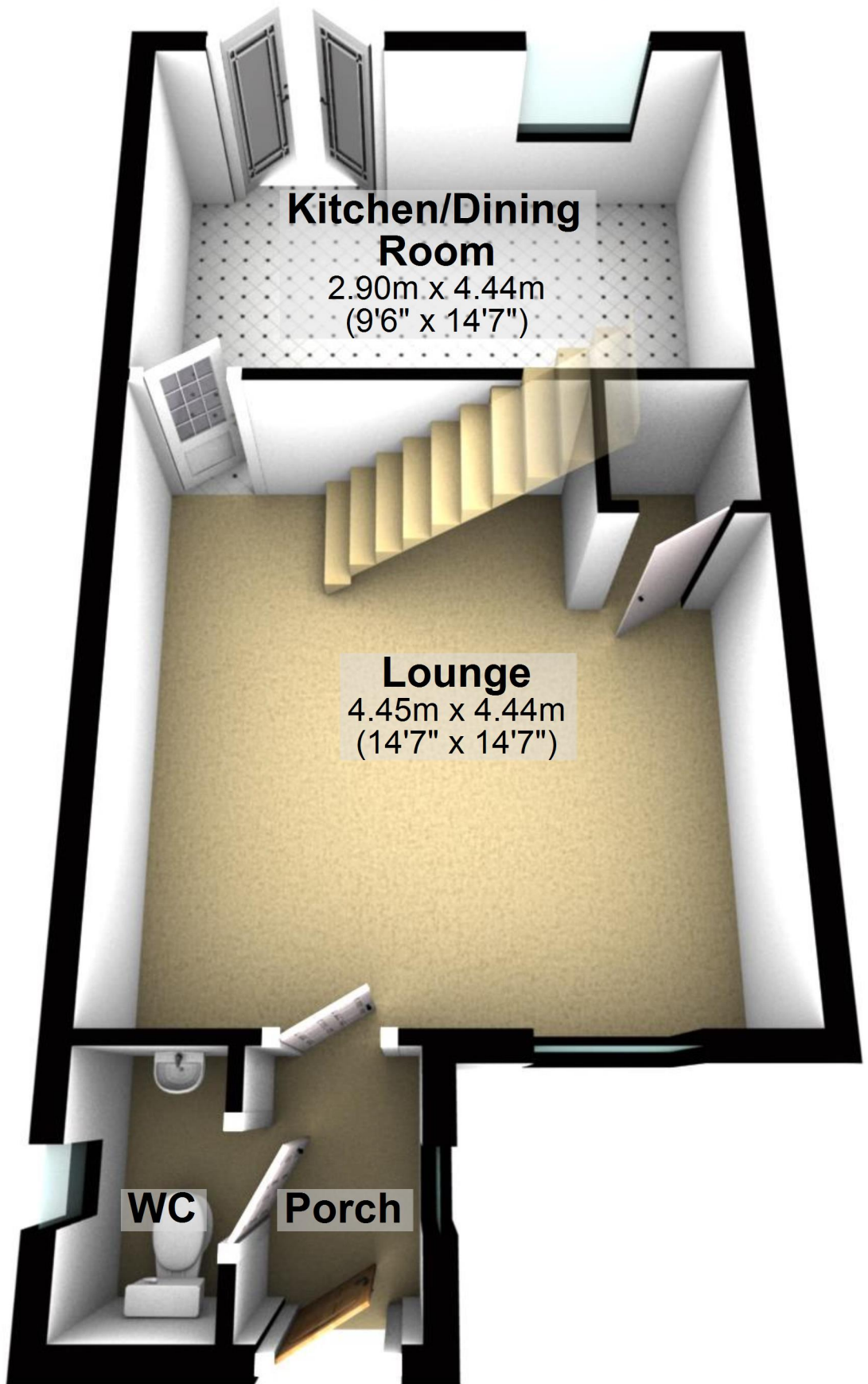
# First Floor

Approx. 33.1 sq. metres (356.2 sq. feet)



# Ground Floor

Approx. 36.5 sq. metres (393.3 sq. feet)



Total area: approx. 69.6 sq. metres (749.5 sq. feet)

For illustrative purposes only. Not to scale. All sizes are approximate.

Plan produced using PlanUp.

# First Floor

Approx. 33.1 sq. metres (356.2 sq. feet)

