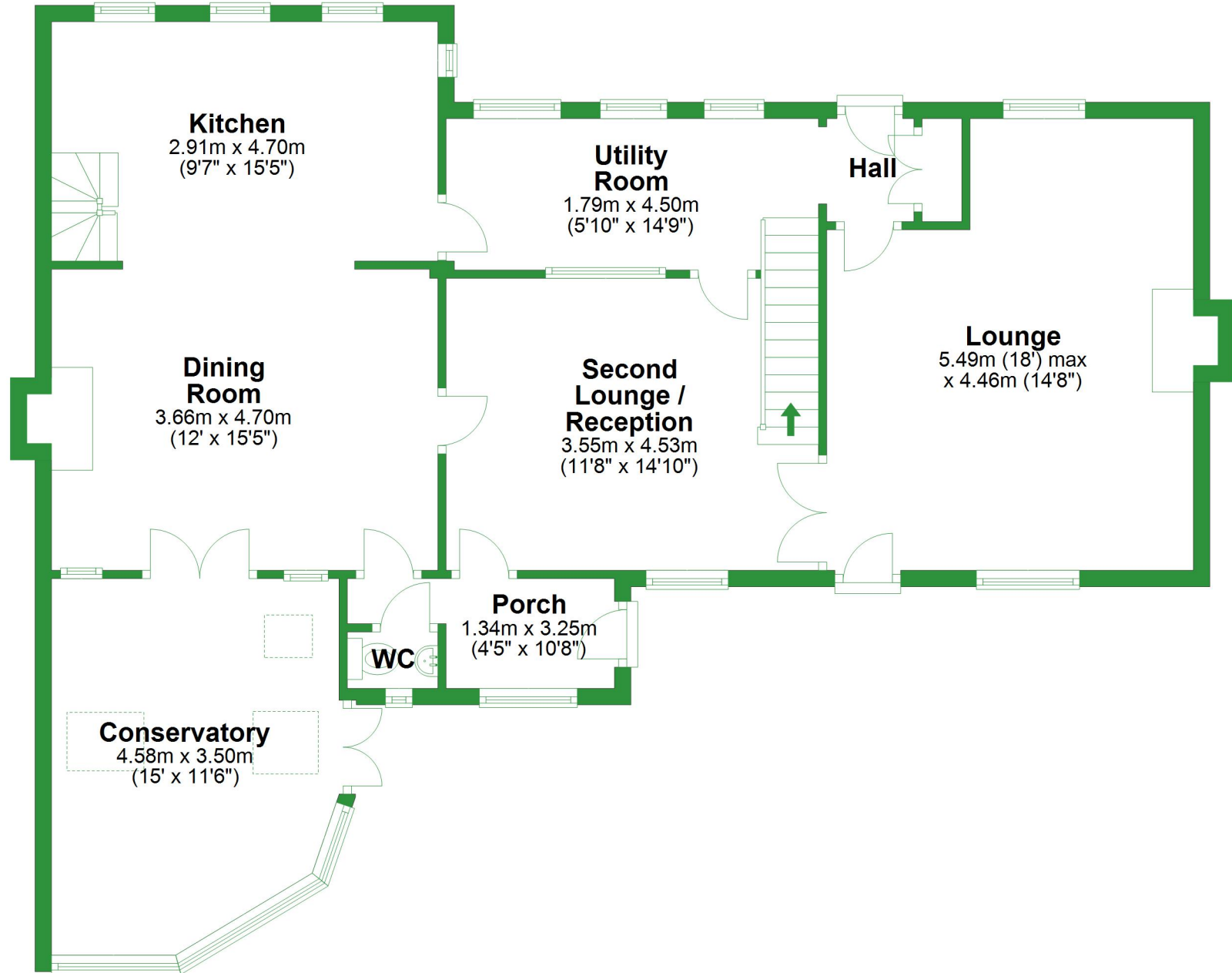


# Ground Floor

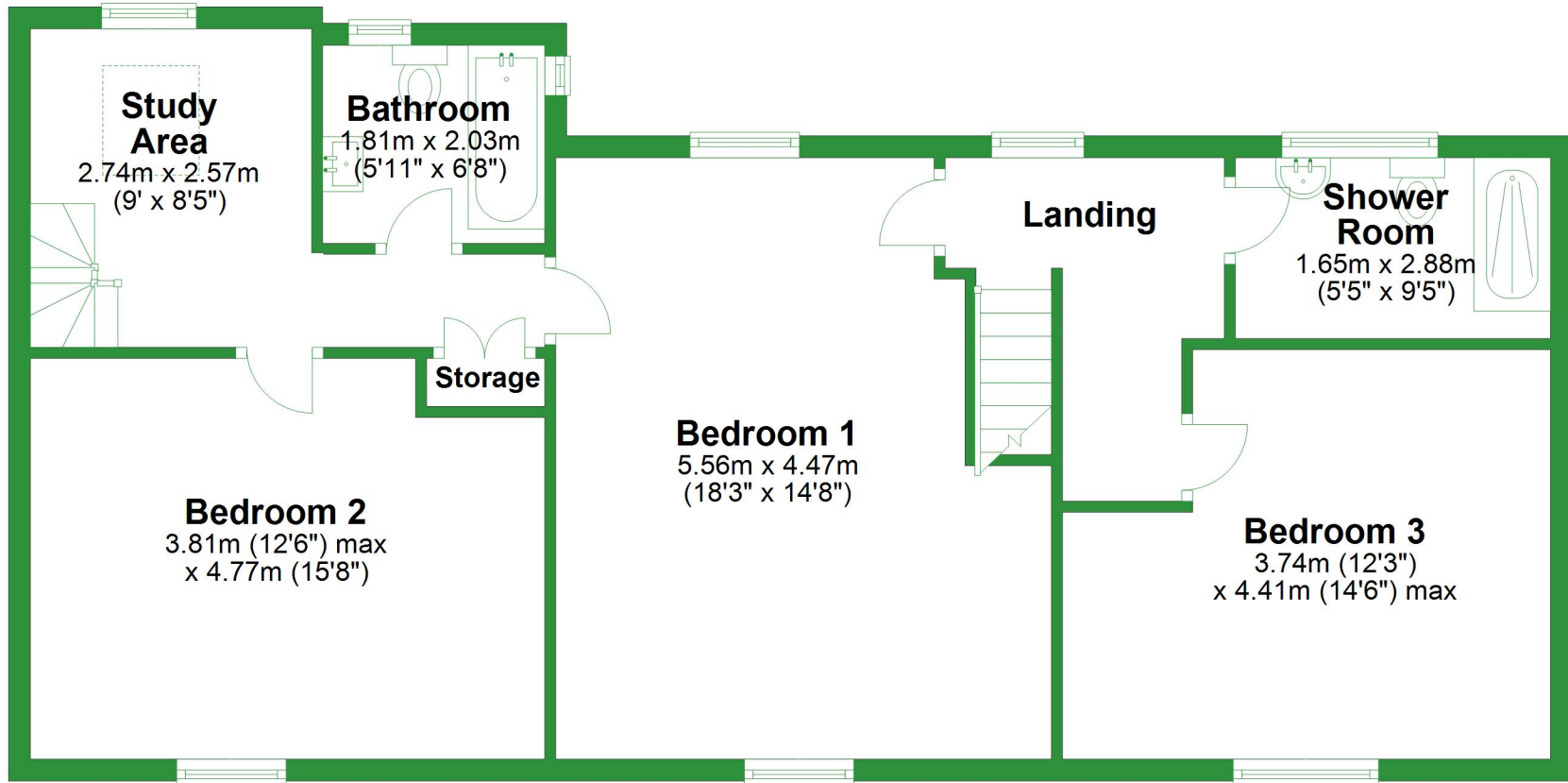
Approx. 101.8 sq. metres (1096.2 sq. feet)



Total area: approx. 185.1 sq. metres (1992.9 sq. feet)

For illustrative purposes only. Not to scale. All sizes are approximate.  
Plan produced using PlanUp.

First Floor  
Approx. 83.3 sq. metres (896.7 sq. feet)



## Ground Floor

Approx. 101.8 sq. metres (1096.2 sq. feet)



Total area: approx. 185.1 sq. metres (1992.9 sq. feet)

For illustrative purposes only. Not to scale. All sizes are approximate.  
Plan produced using PlanUp.

## First Floor

Approx. 83.3 sq. metres (896.7 sq. feet)

