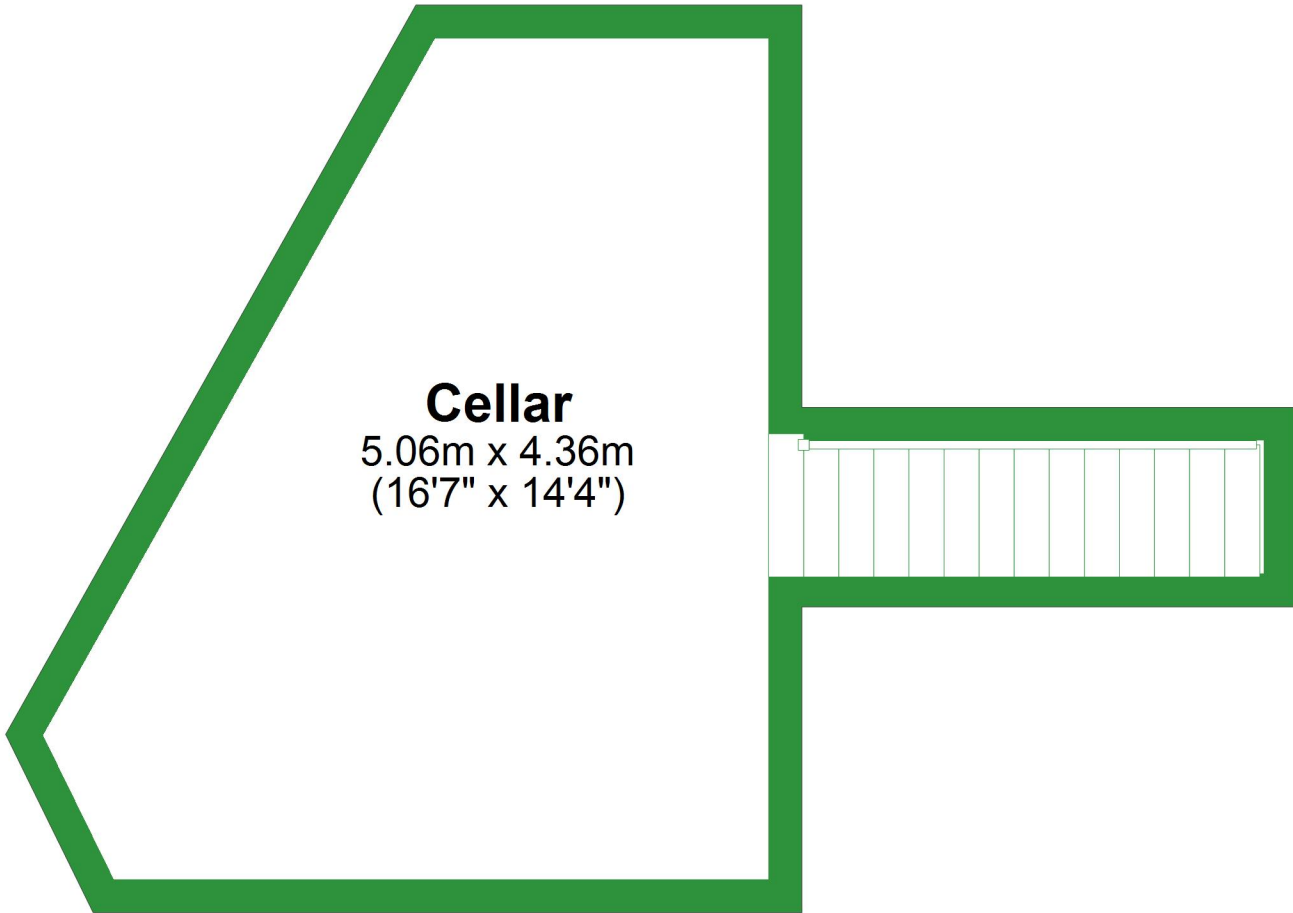


# Basement

Approx. 19.4 sq. metres (208.8 sq. feet)



## Cellar

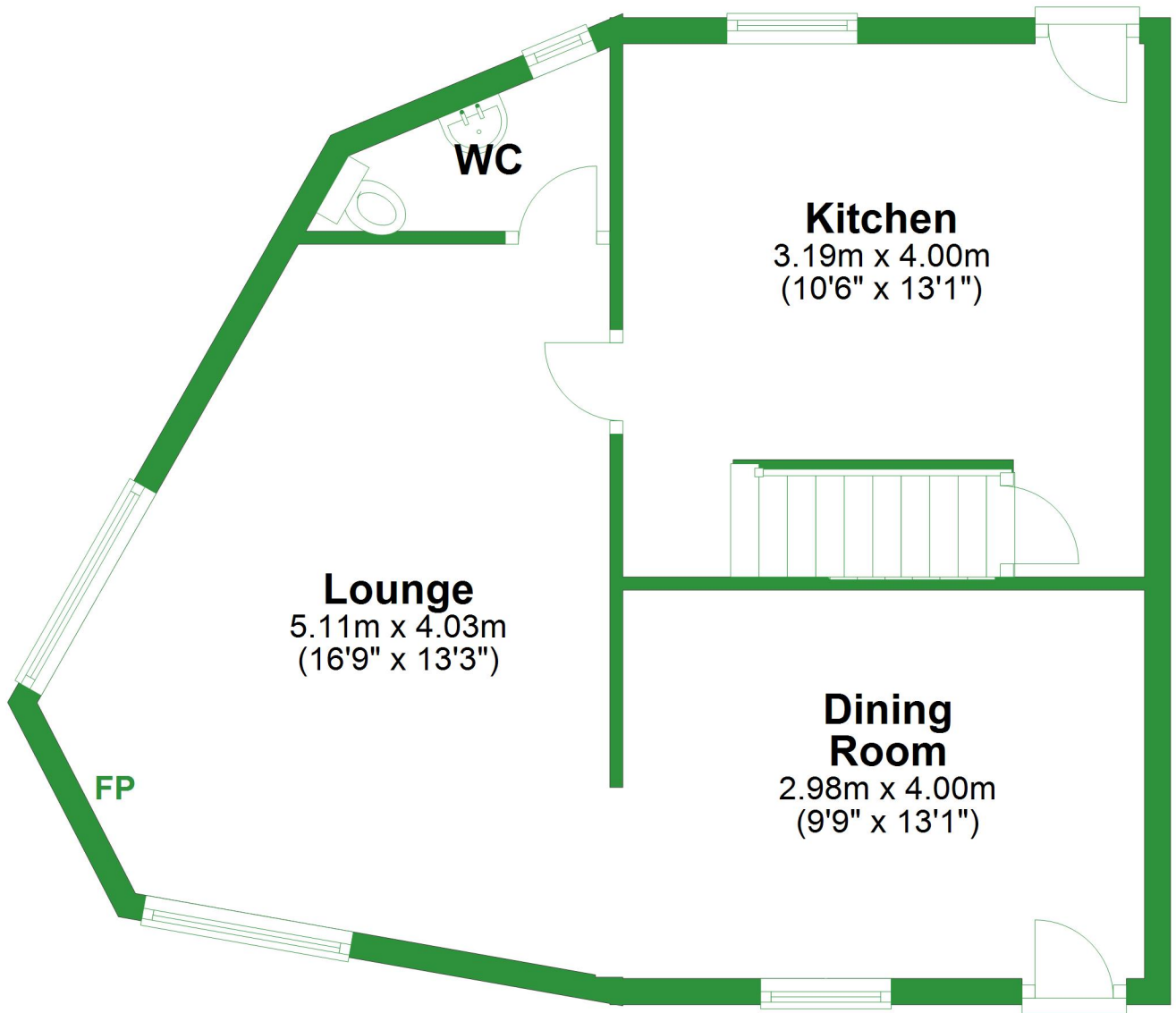
5.06m x 4.36m  
(16'7" x 14'4")

Total area: approx. 120.1 sq. metres (1293.2 sq. feet)

For illustrative purposes only. Not to scale. All sizes are approximate.  
Plan produced using PlanUp.

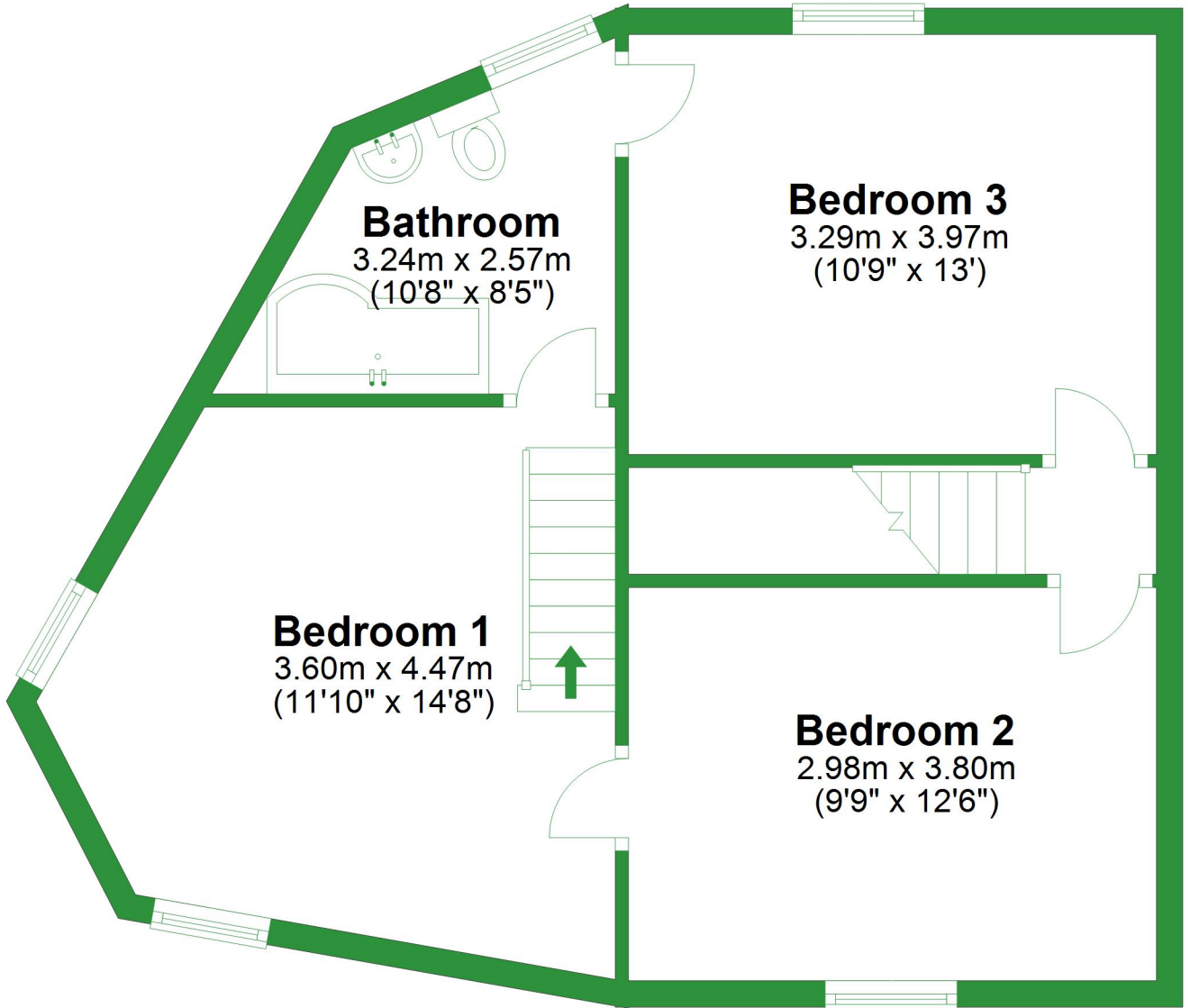
# Ground Floor

Approx. 50.7 sq. metres (545.6 sq. feet)



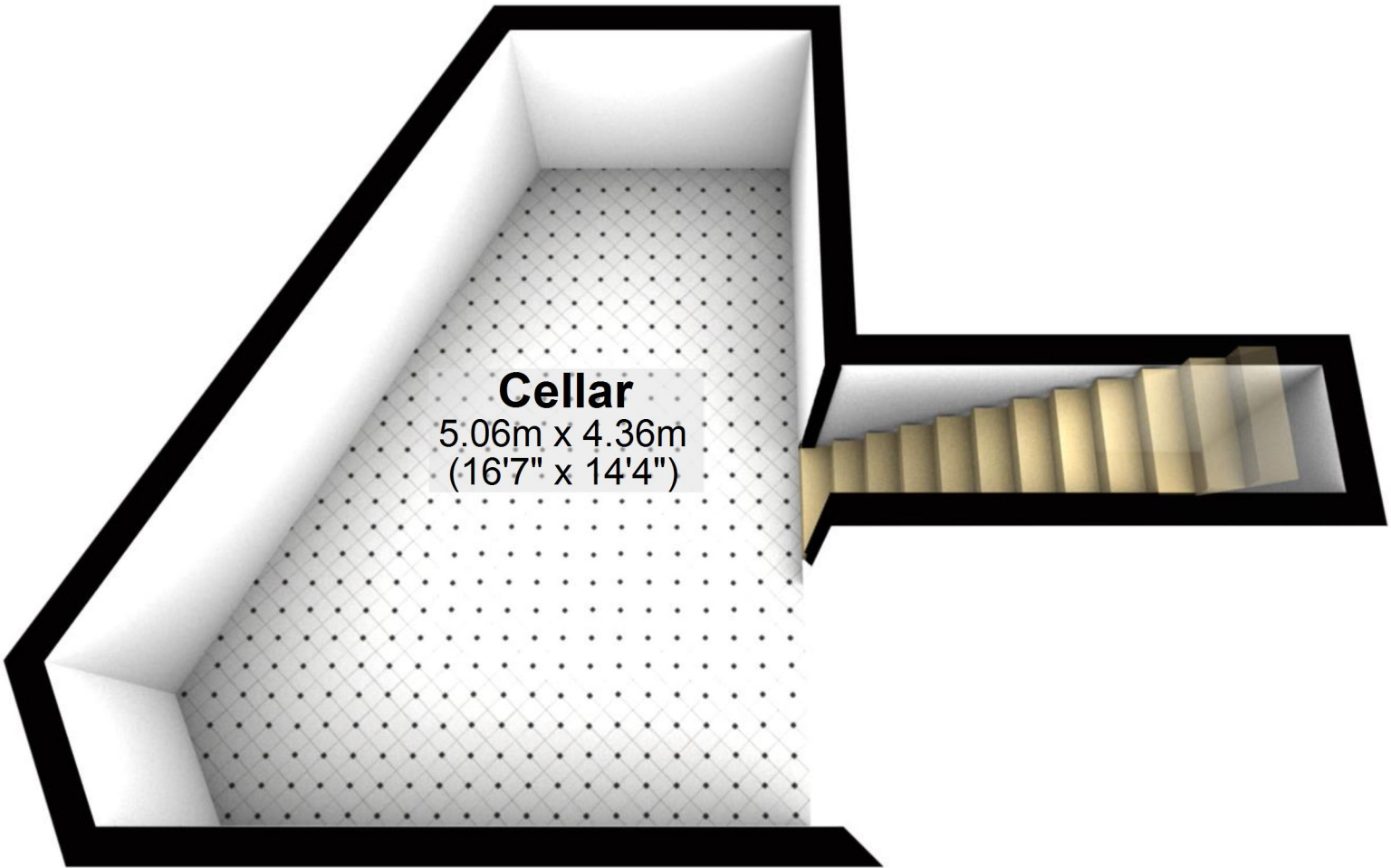
# First Floor

Approx. 50.1 sq. metres (538.8 sq. feet)



## Basement

Approx. 19.4 sq. metres (208.8 sq. feet)



### Cellar

5.06m x 4.36m  
(16'7" x 14'4")

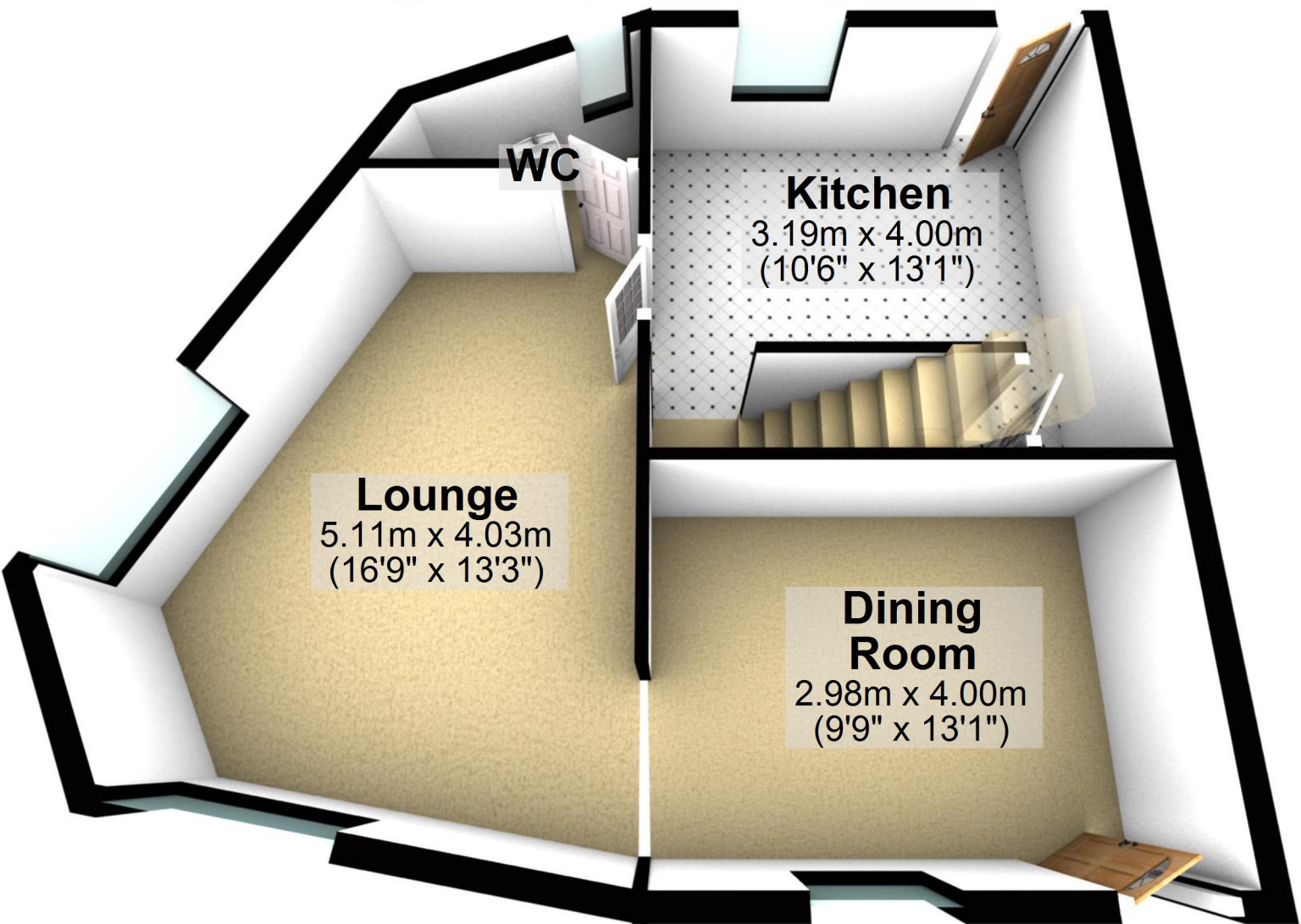
Total area: approx. 120.1 sq. metres (1293.2 sq. feet)

For illustrative purposes only. Not to scale. All sizes are approximate.

Plan produced using PlanUp.

# Ground Floor

Approx. 50.7 sq. metres (545.6 sq. feet)



**WC**

**Kitchen**

3.19m x 4.00m  
(10'6" x 13'1")

**Lounge**

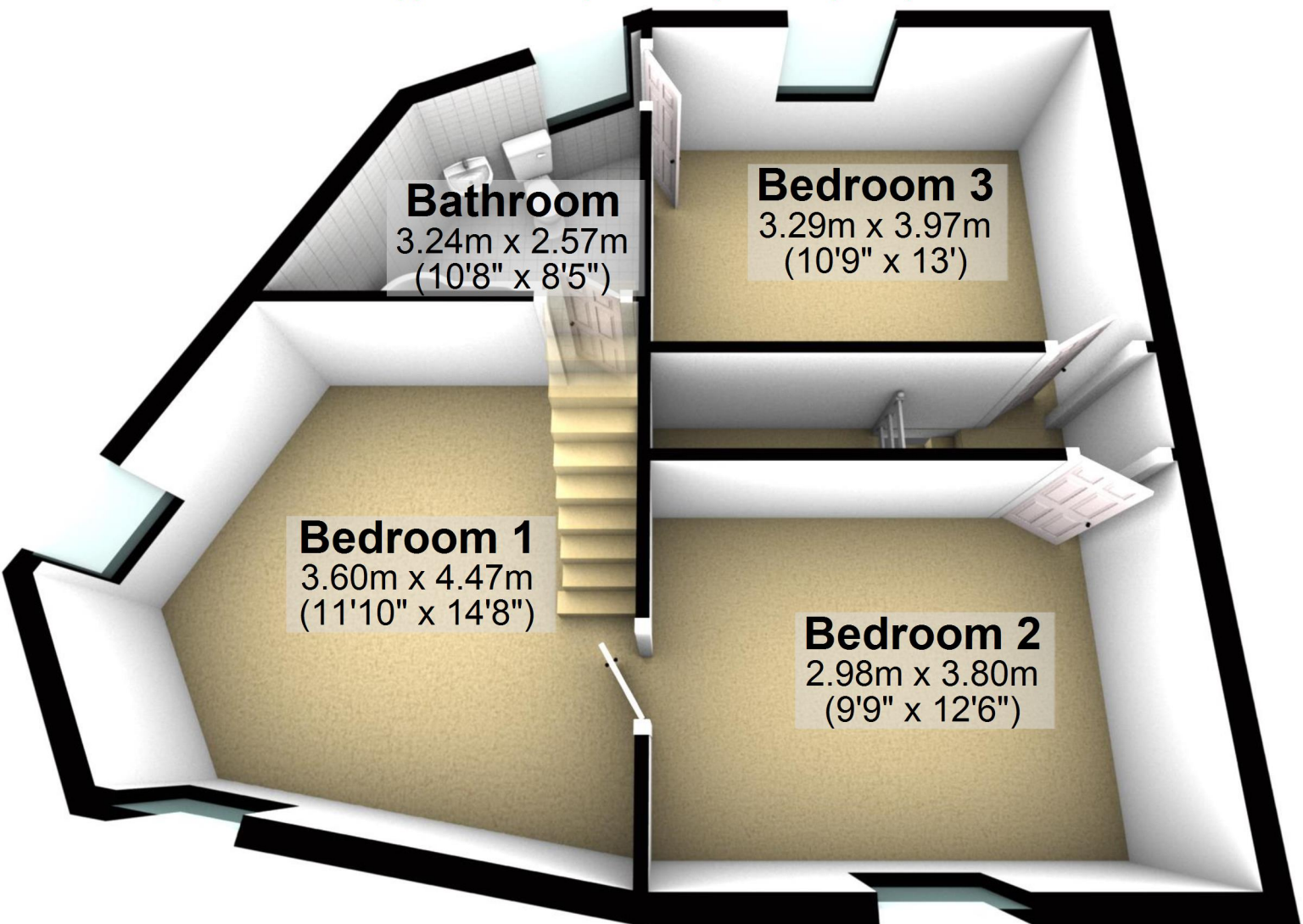
5.11m x 4.03m  
(16'9" x 13'3")

**Dining  
Room**

2.98m x 4.00m  
(9'9" x 13'1")

# First Floor

Approx. 50.1 sq. metres (538.8 sq. feet)



**Bathroom**  
3.24m x 2.57m  
(10'8" x 8'5")

**Bedroom 3**  
3.29m x 3.97m  
(10'9" x 13')

**Bedroom 1**  
3.60m x 4.47m  
(11'10" x 14'8")

**Bedroom 2**  
2.98m x 3.80m  
(9'9" x 12'6")