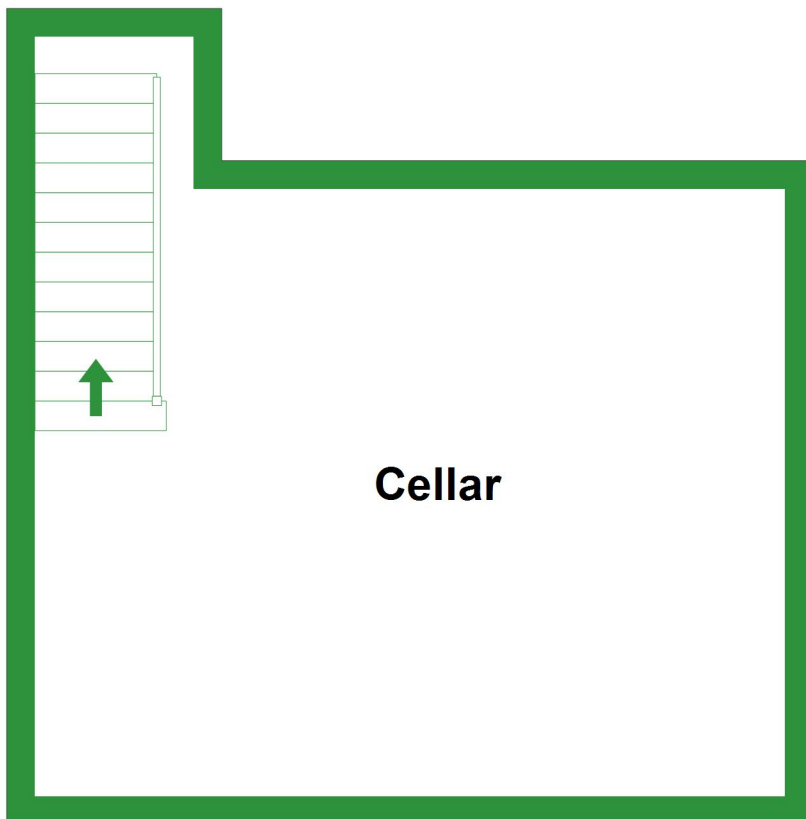


Basement

Approx. 23.9 sq. metres (257.0 sq. feet)

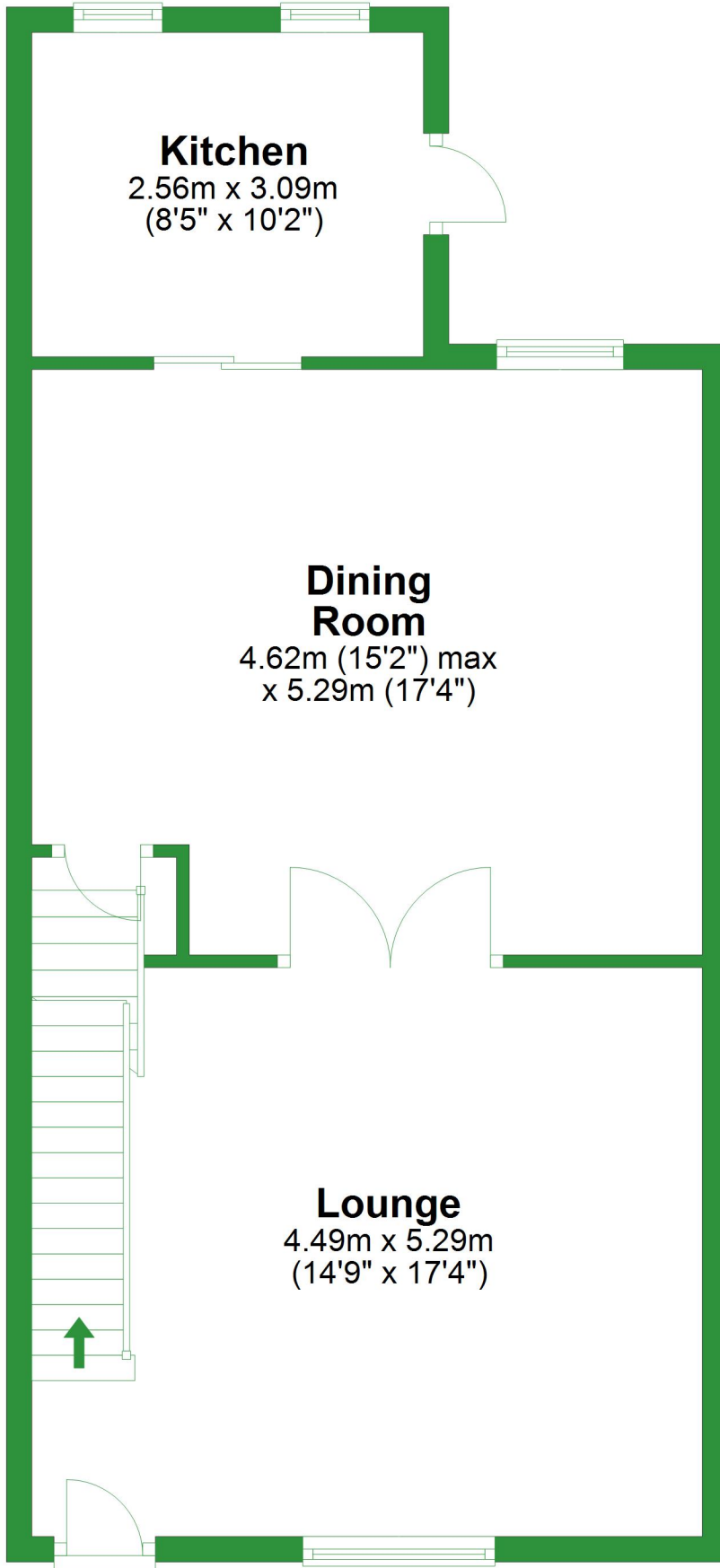


Total area: approx. 129.6 sq. metres (1394.8 sq. feet)

For illustrative purposes only. Not to scale. All sizes are approximate.
Plan produced using PlanUp.

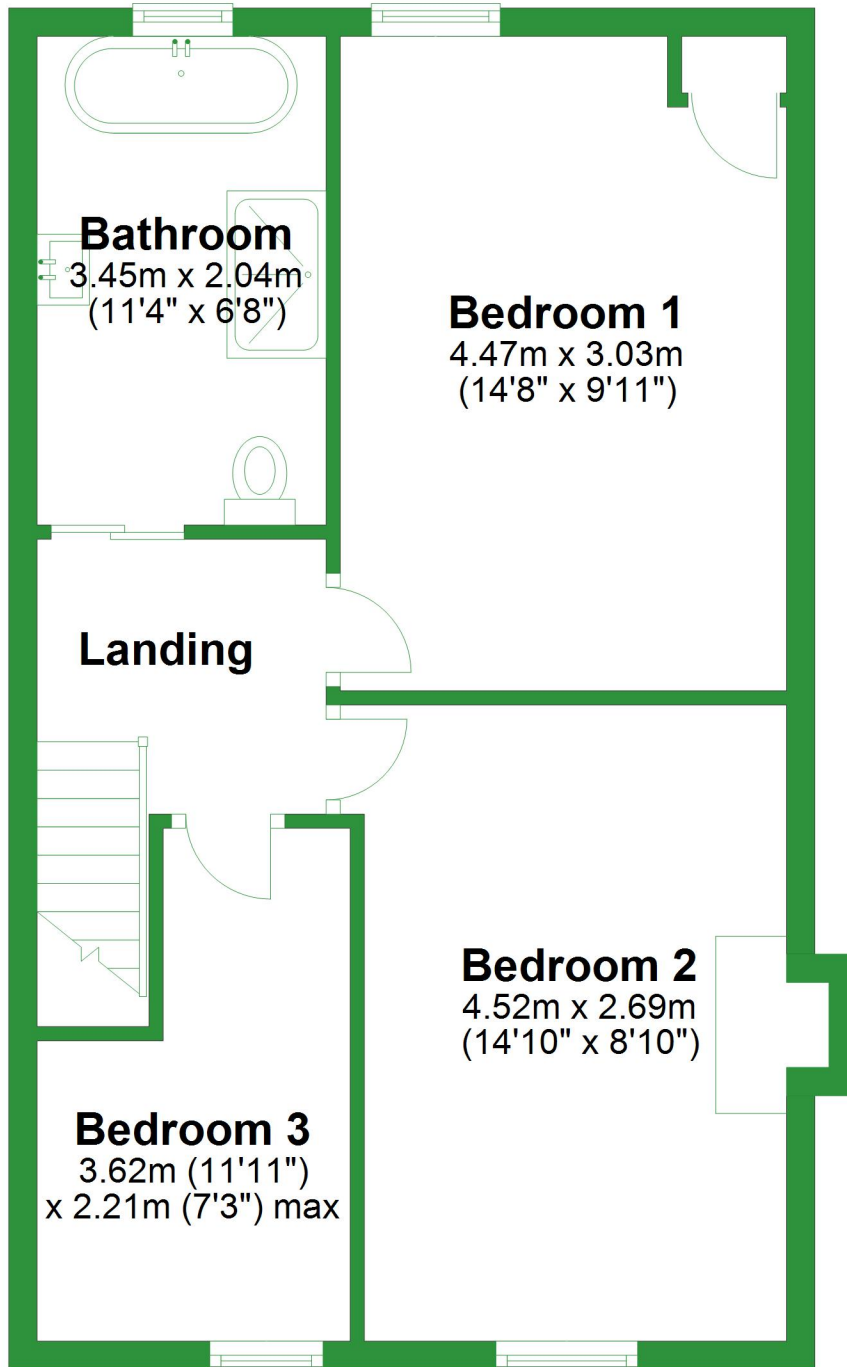
Ground Floor

Approx. 56.9 sq. metres (612.9 sq. feet)



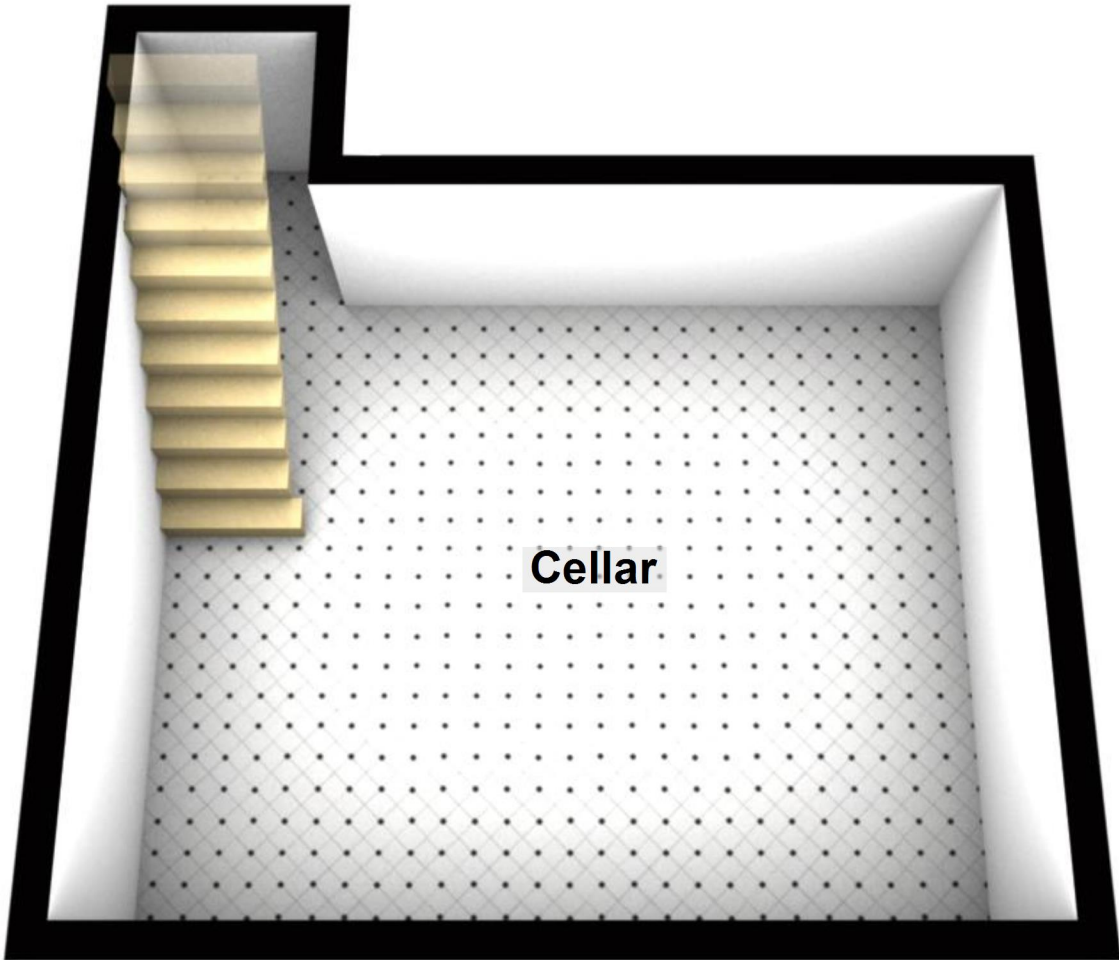
First Floor

Approx. 48.8 sq. metres (524.9 sq. feet)



Basement

Approx. 23.9 sq. metres (257.0 sq. feet)



Cellar

Total area: approx. 129.6 sq. metres (1394.8 sq. feet)

For illustrative purposes only. Not to scale. All sizes are approximate.

Plan produced using PlanUp.

Ground Floor

Approx. 56.9 sq. metres (612.9 sq. feet)

Kitchen

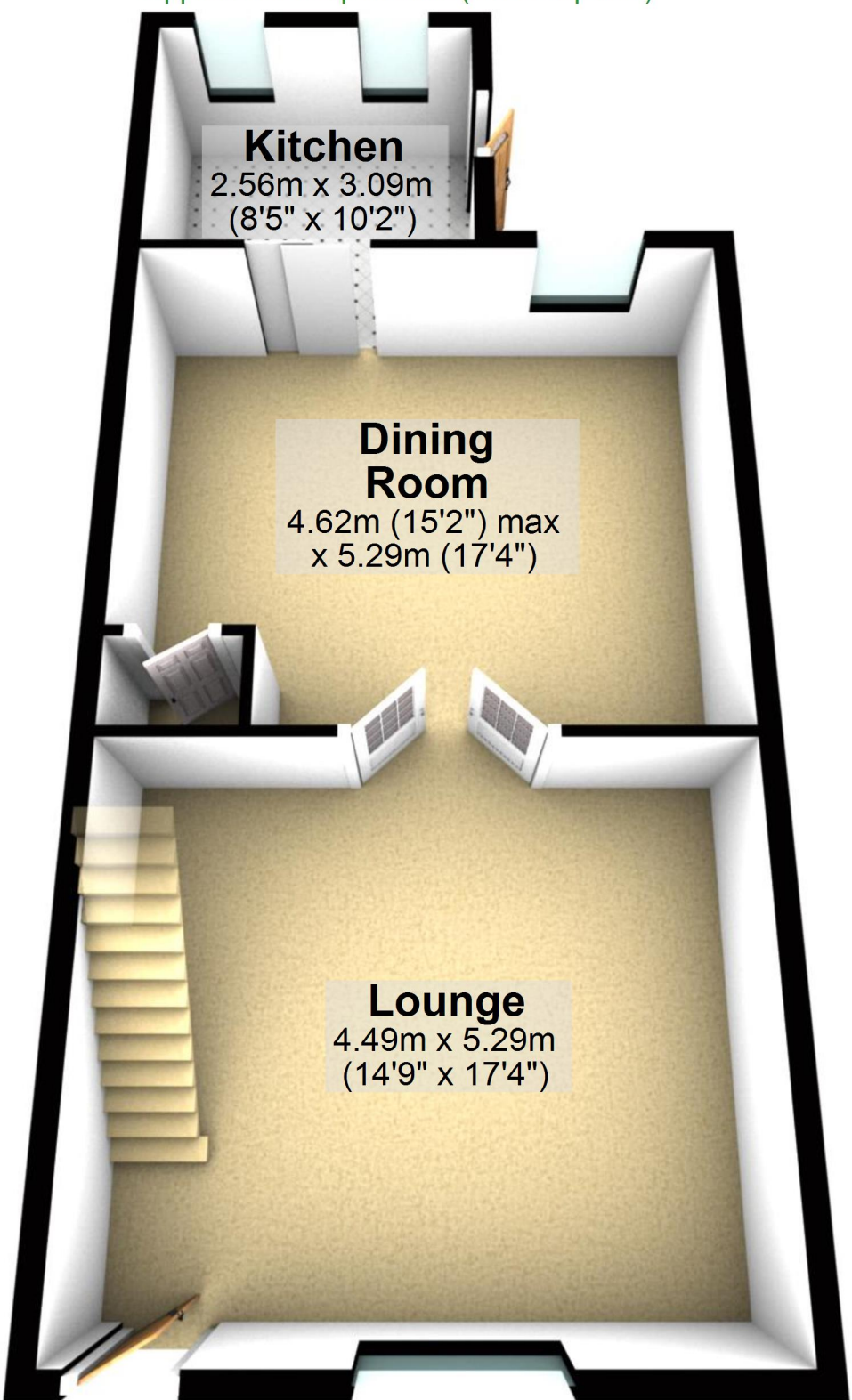
2.56m x 3.09m
(8'5" x 10'2")

Dining Room

4.62m (15'2") max
x 5.29m (17'4")

Lounge

4.49m x 5.29m
(14'9" x 17'4")



First Floor

Approx. 48.8 sq. metres (524.9 sq. feet)

