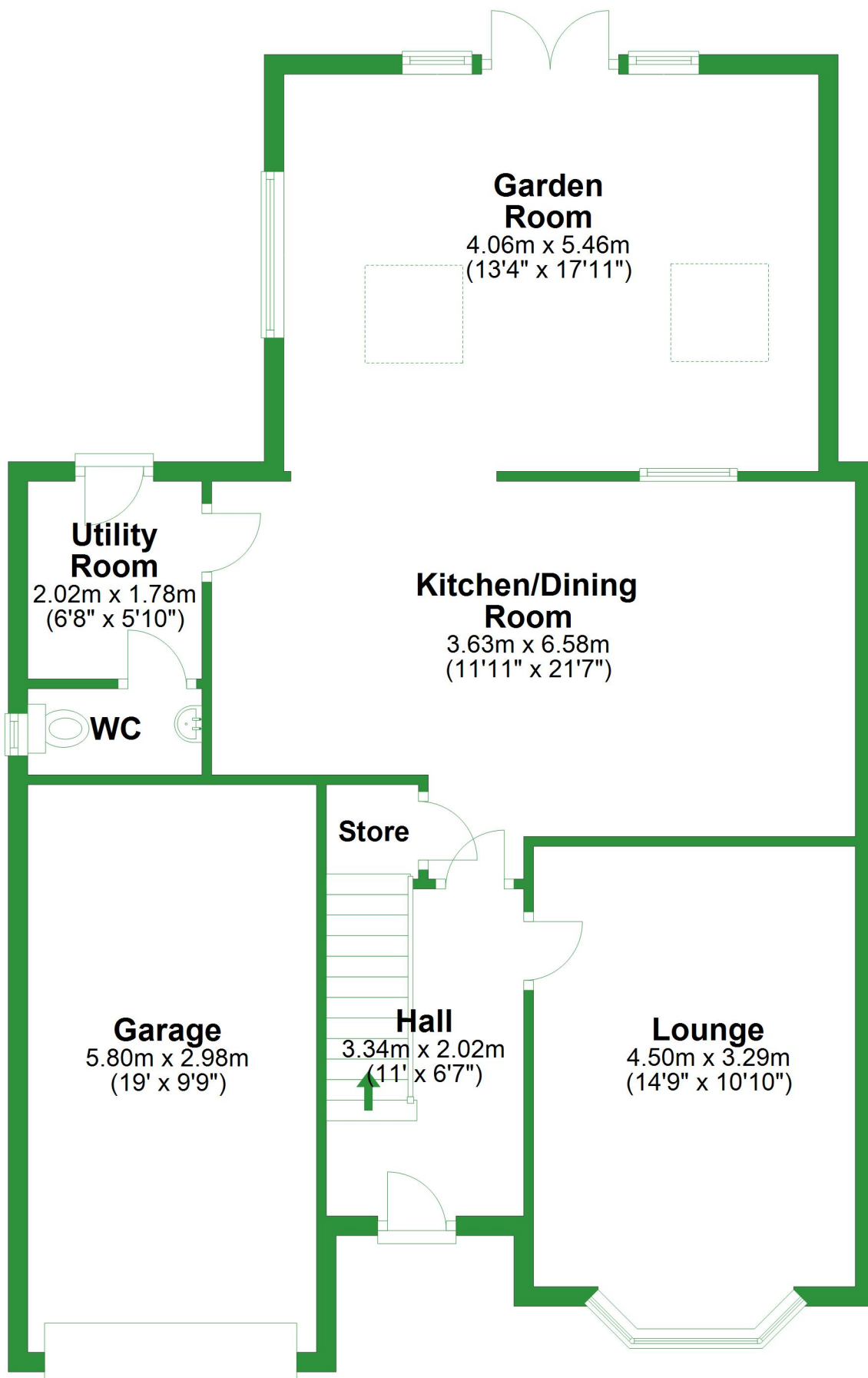


# Ground Floor

Approx. 93.0 sq. metres (1000.8 sq. feet)

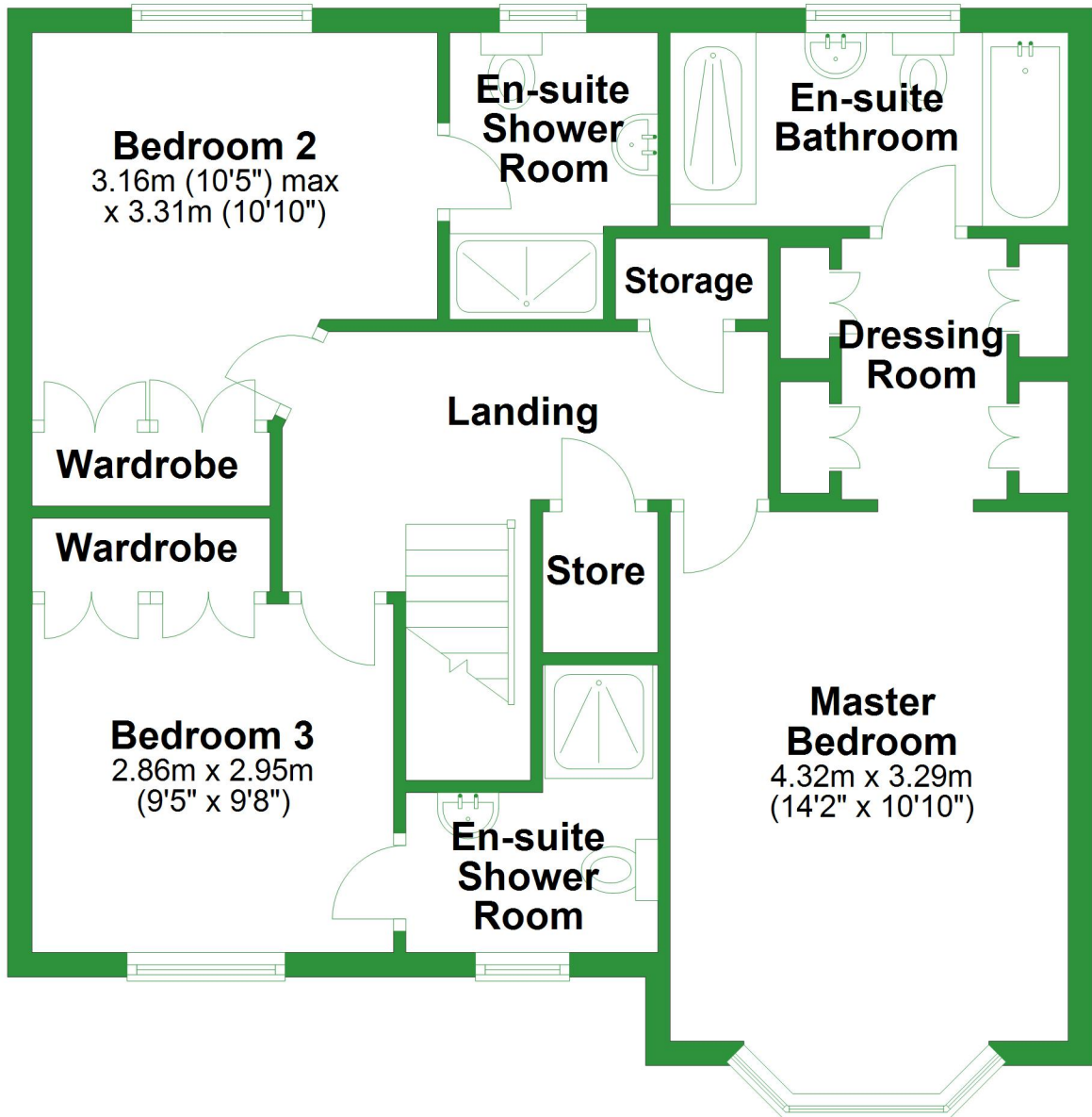


Total area: approx. 159.2 sq. metres (1714.1 sq. feet)

For illustrative purposes only. Not to scale. All sizes are approximate.  
Plan produced using PlanUp.

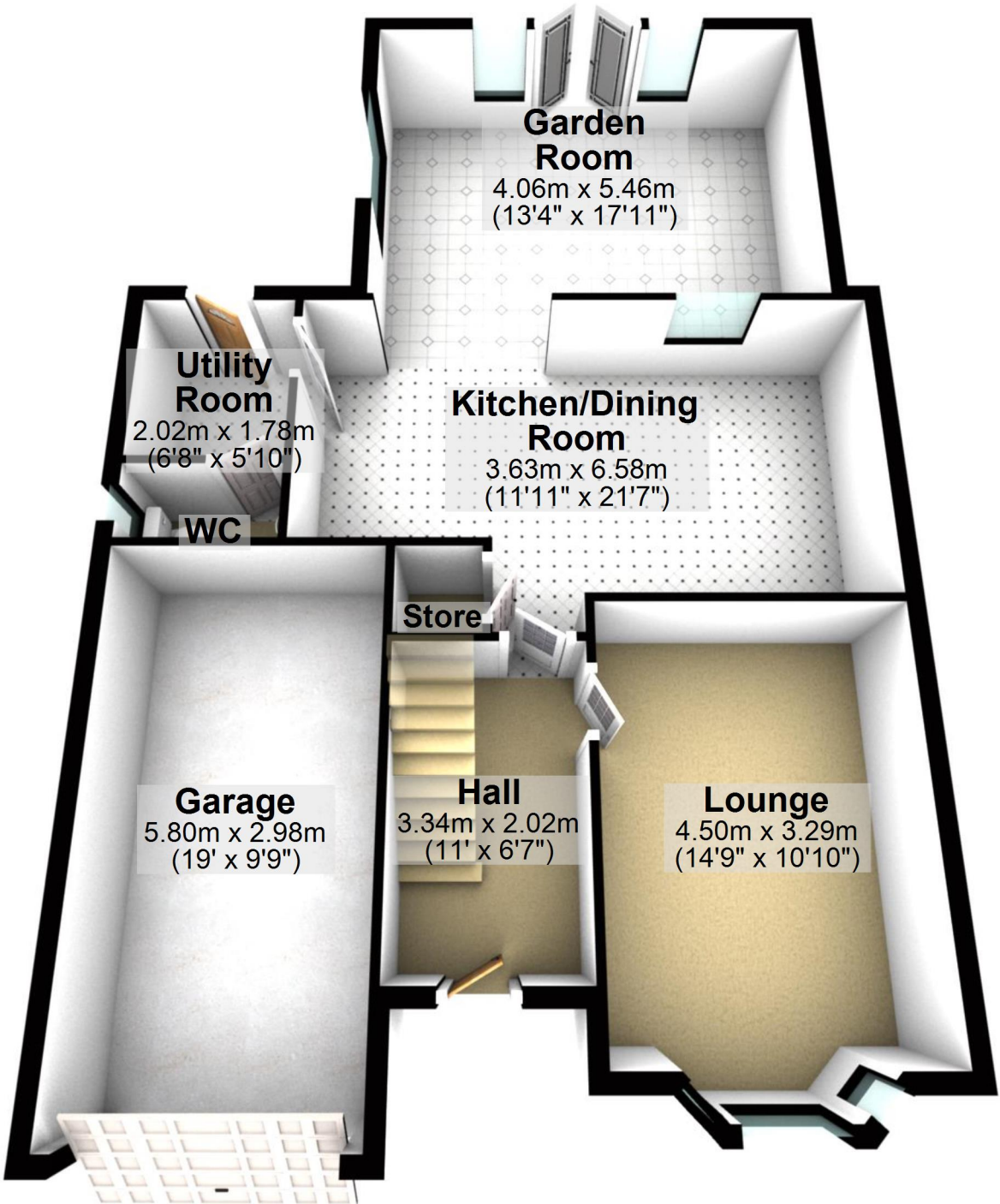
# First Floor

Approx. 66.3 sq. metres (713.4 sq. feet)



## Ground Floor

Approx. 93.0 sq. metres (1000.8 sq. feet)



Total area: approx. 159.2 sq. metres (1714.1 sq. feet)

For illustrative purposes only. Not to scale. All sizes are approximate.

Plan produced using PlanUp.

## First Floor

Approx. 66.3 sq. metres (713.4 sq. feet)

