

# Ground Floor

Approx. 43.8 sq. metres (471.9 sq. feet)

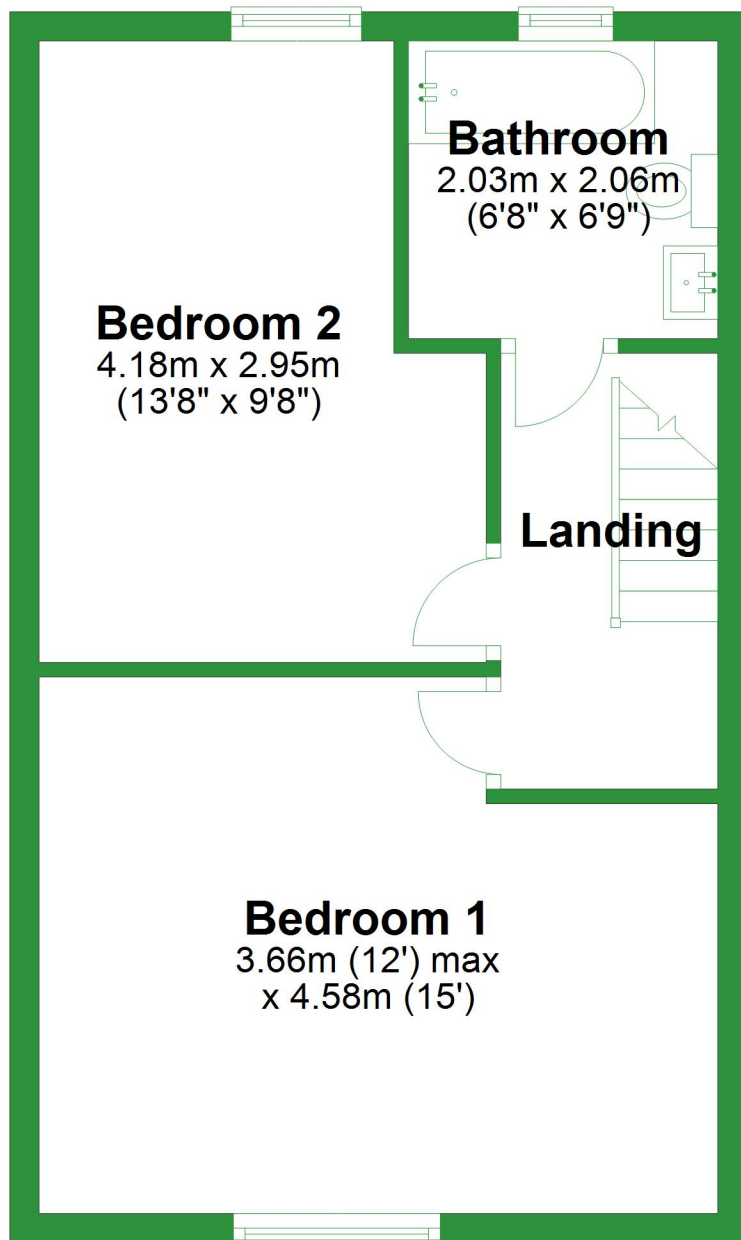


Total area: approx. 80.9 sq. metres (870.6 sq. feet)

For illustrative purposes only. Not to scale. All sizes are approximate.  
Plan produced using PlanUp.

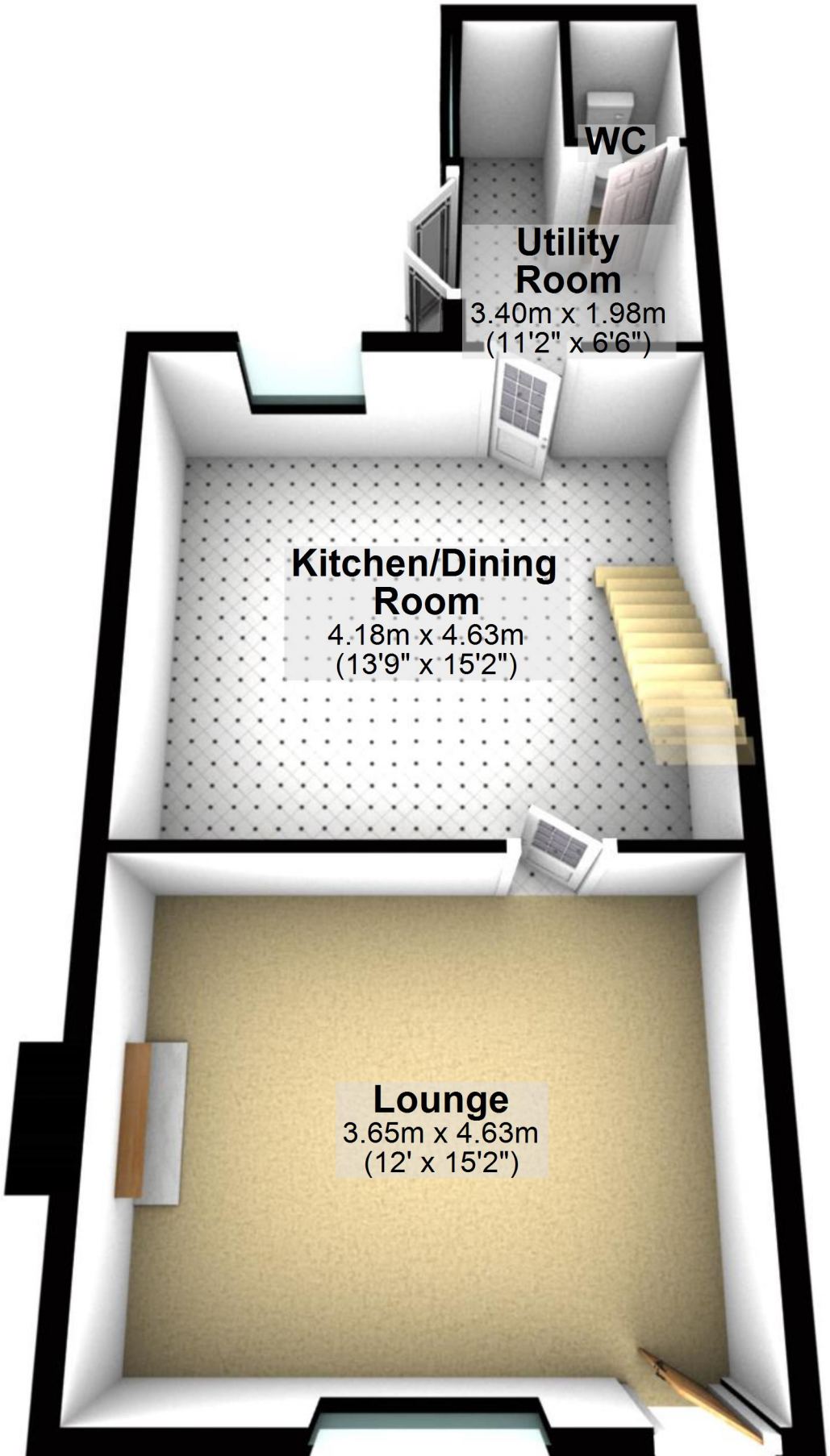
# First Floor

Approx. 37.0 sq. metres (398.6 sq. feet)



# Ground Floor

Approx. 43.8 sq. metres (471.9 sq. feet)



**WC**

**Utility Room**

3.40m x 1.98m  
(11'2" x 6'6")

**Kitchen/Dining Room**

4.18m x 4.63m  
(13'9" x 15'2")

**Lounge**

3.65m x 4.63m  
(12' x 15'2")

Total area: approx. 80.9 sq. metres (870.6 sq. feet)

For illustrative purposes only. Not to scale. All sizes are approximate.

Plan produced using PlanUp.

## First Floor

Approx. 37.0 sq. metres (398.6 sq. feet)

