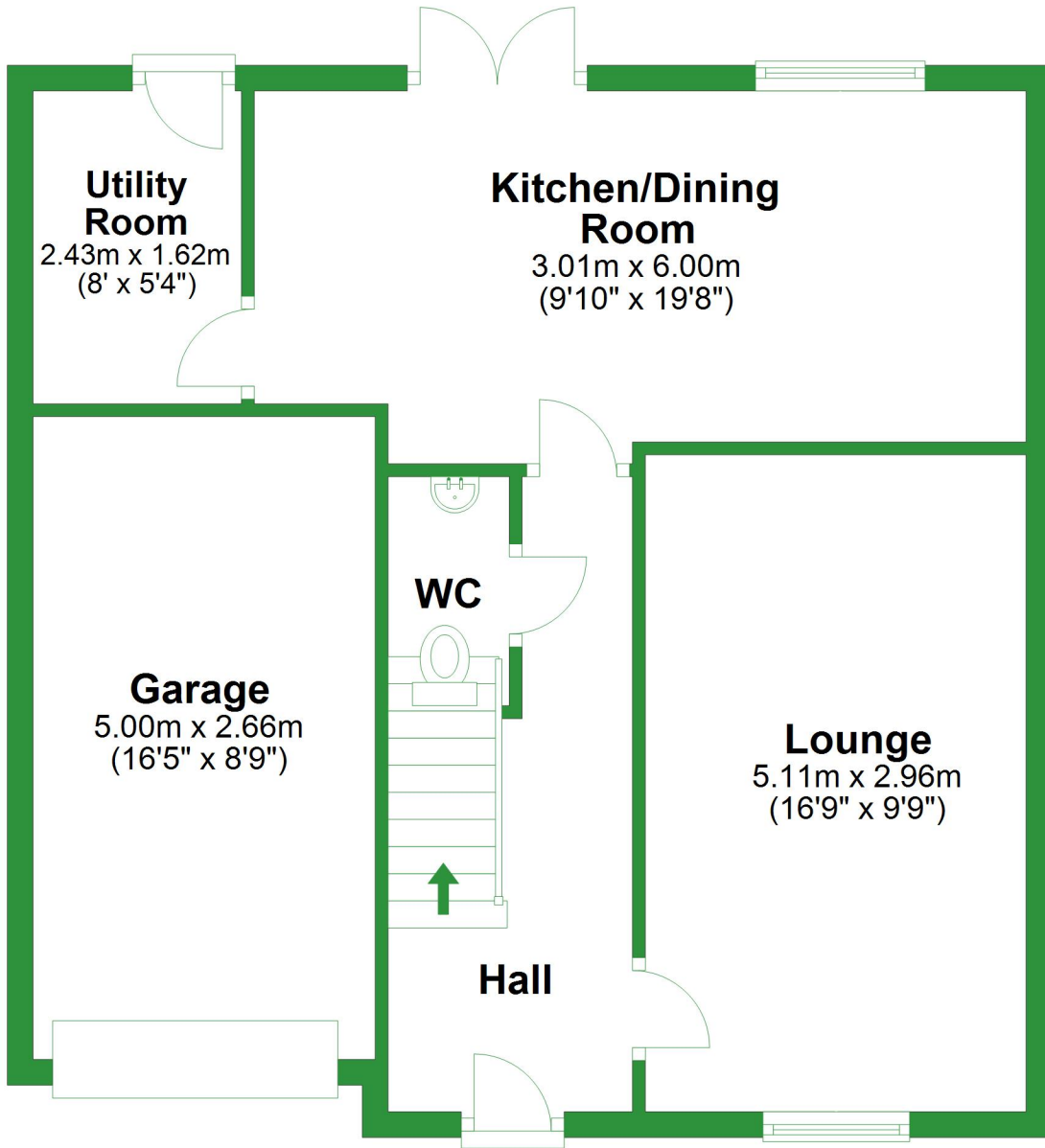


# Ground Floor

Approx. 60.1 sq. metres (646.5 sq. feet)



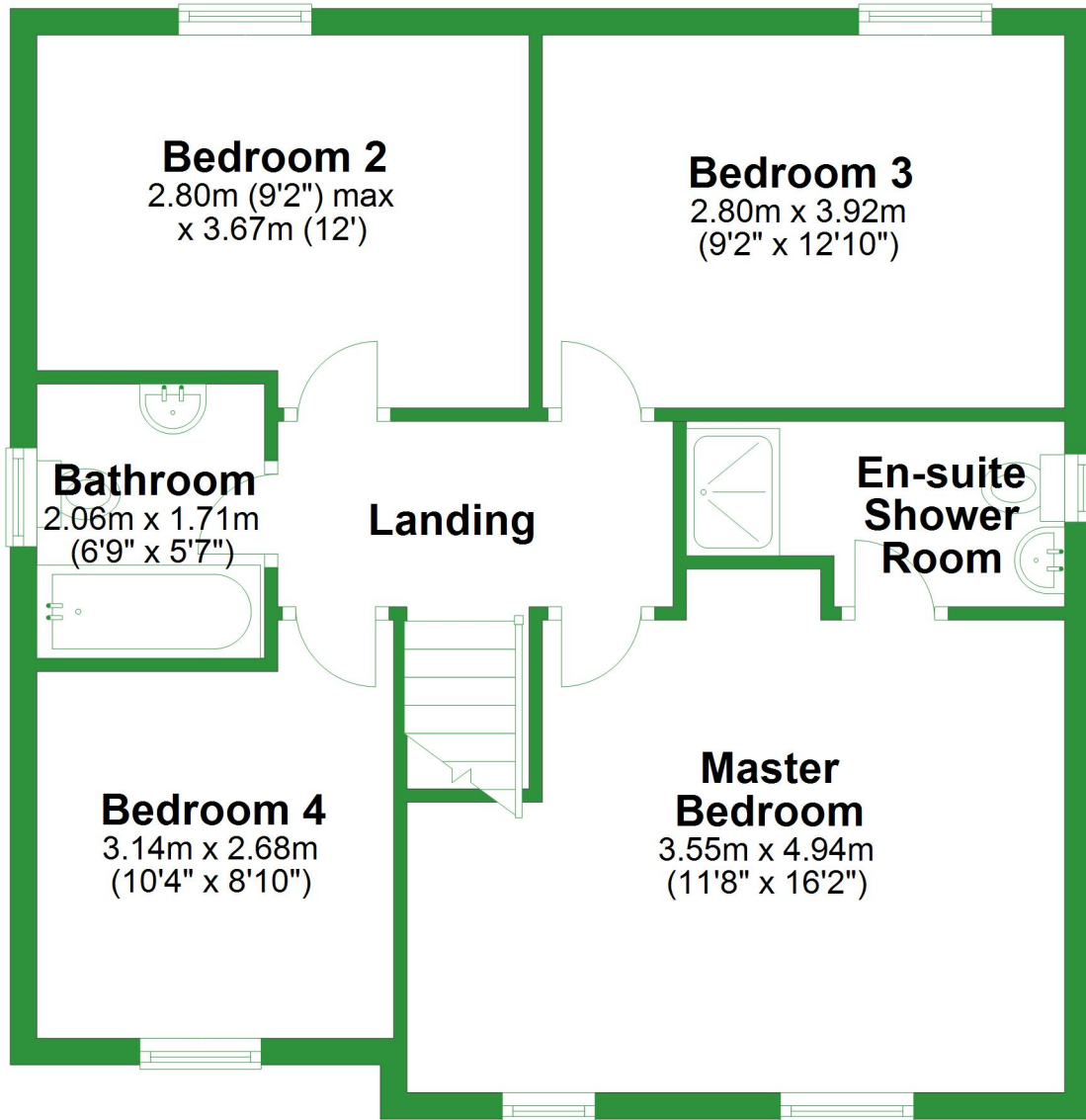
Total area: approx. 120.1 sq. metres (1293.1 sq. feet)

For illustrative purposes only. Not to scale. All sizes are approximate.

Plan produced using PlanUp.

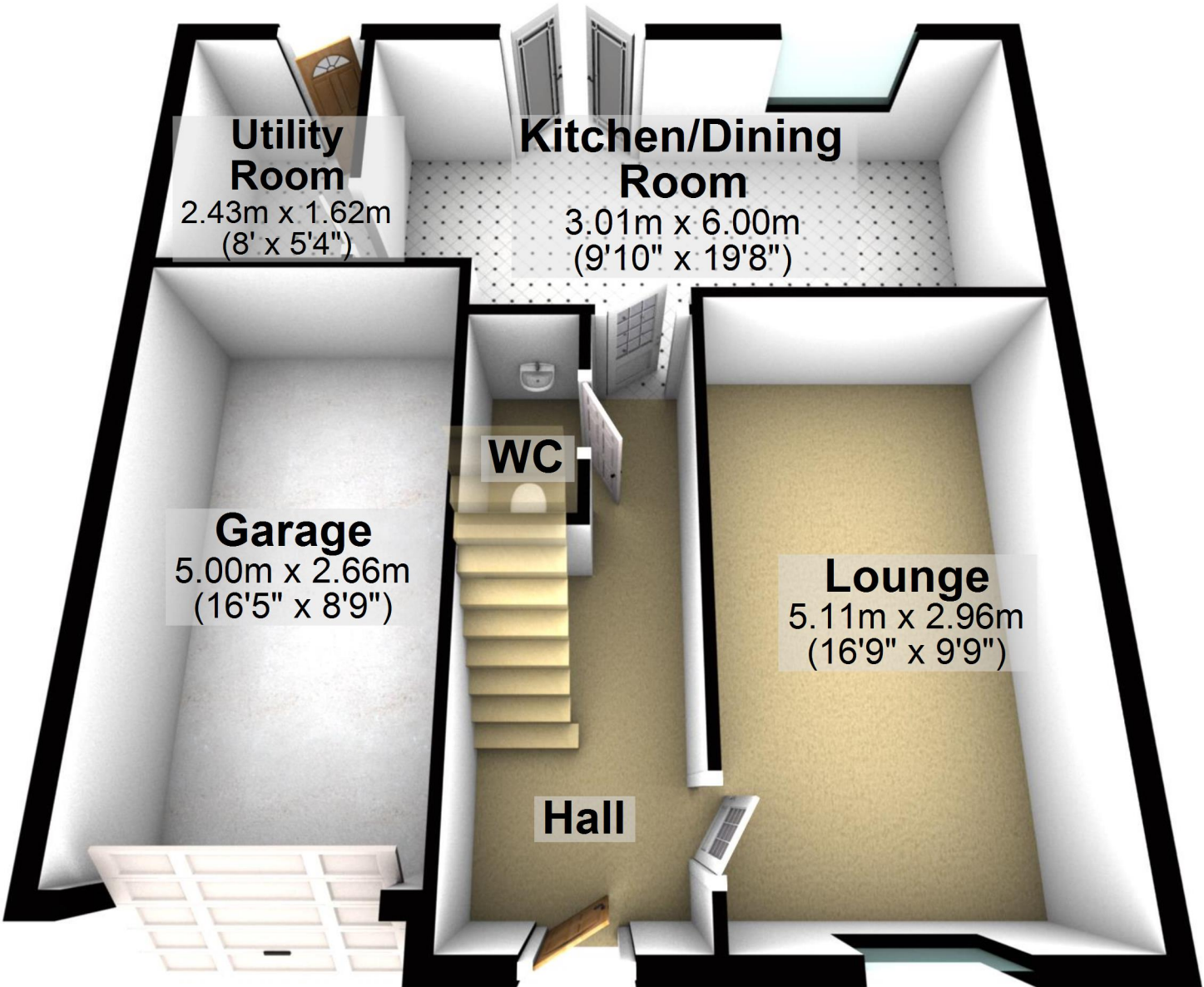
# First Floor

Approx. 60.1 sq. metres (646.6 sq. feet)



# Ground Floor

Approx. 60.1 sq. metres (646.5 sq. feet)



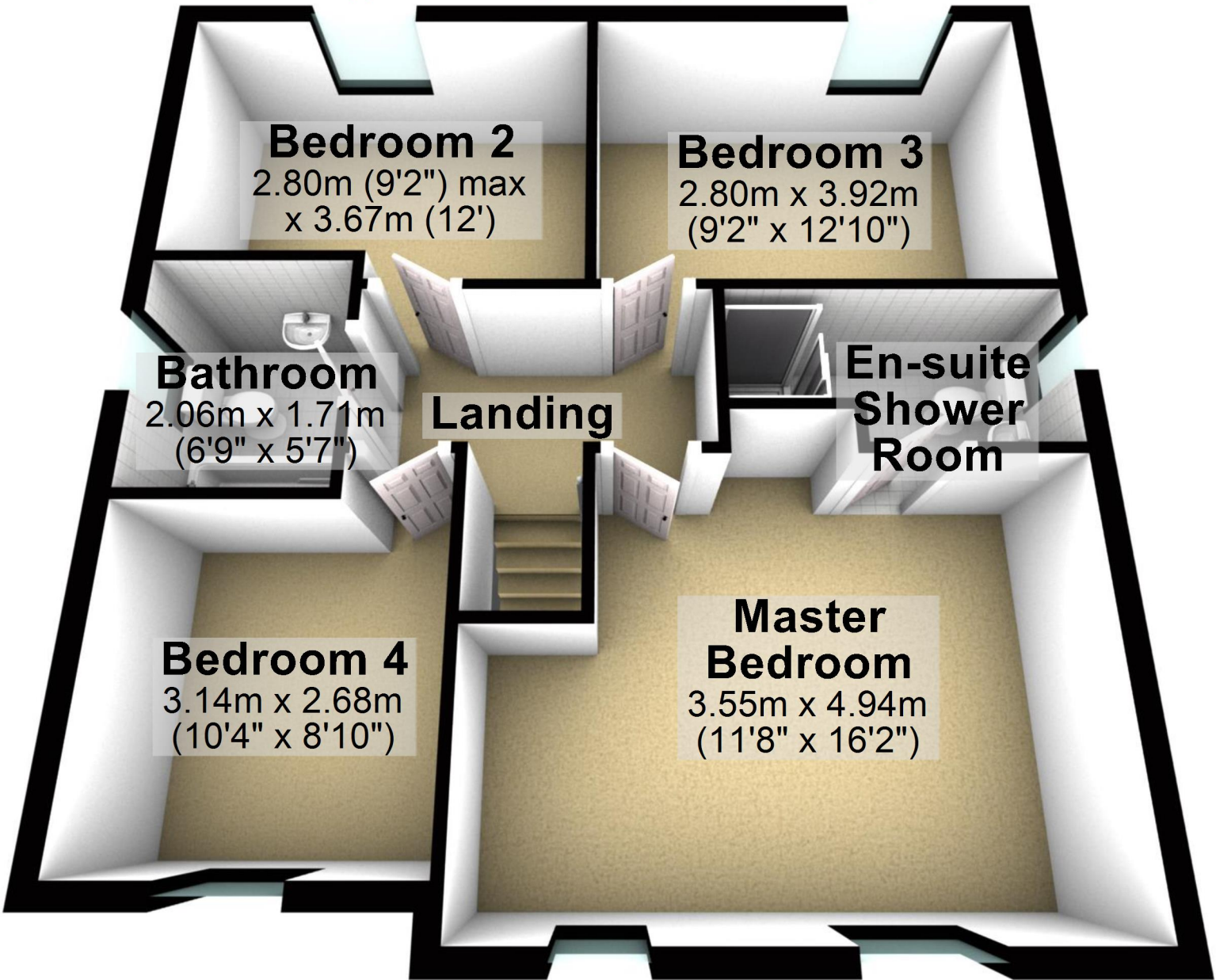
Total area: approx. 120.1 sq. metres (1293.1 sq. feet)

For illustrative purposes only. Not to scale. All sizes are approximate.

Plan produced using PlanUp.

# First Floor

Approx. 60.1 sq. metres (646.6 sq. feet)



## Bedroom 2

2.80m (9'2") max  
x 3.67m (12')

## Bedroom 3

2.80m x 3.92m  
(9'2" x 12'10")

## Bathroom

2.06m x 1.71m  
(6'9" x 5'7")

## Landing

## En-suite Shower Room

## Bedroom 4

3.14m x 2.68m  
(10'4" x 8'10")

## Master Bedroom

3.55m x 4.94m  
(11'8" x 16'2")