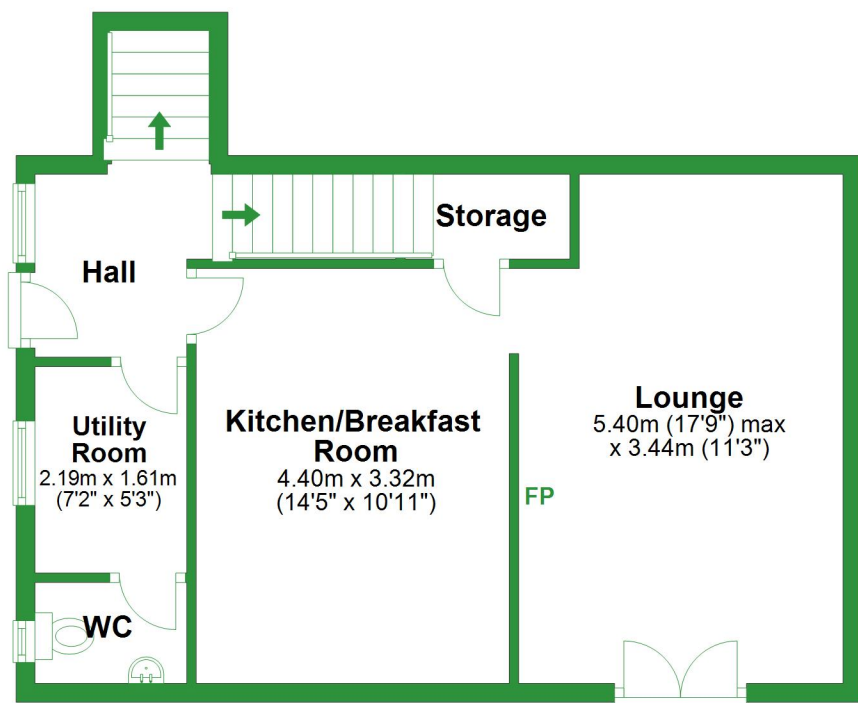


## Ground Floor

Approx. 47.8 sq. metres (515.0 sq. feet)

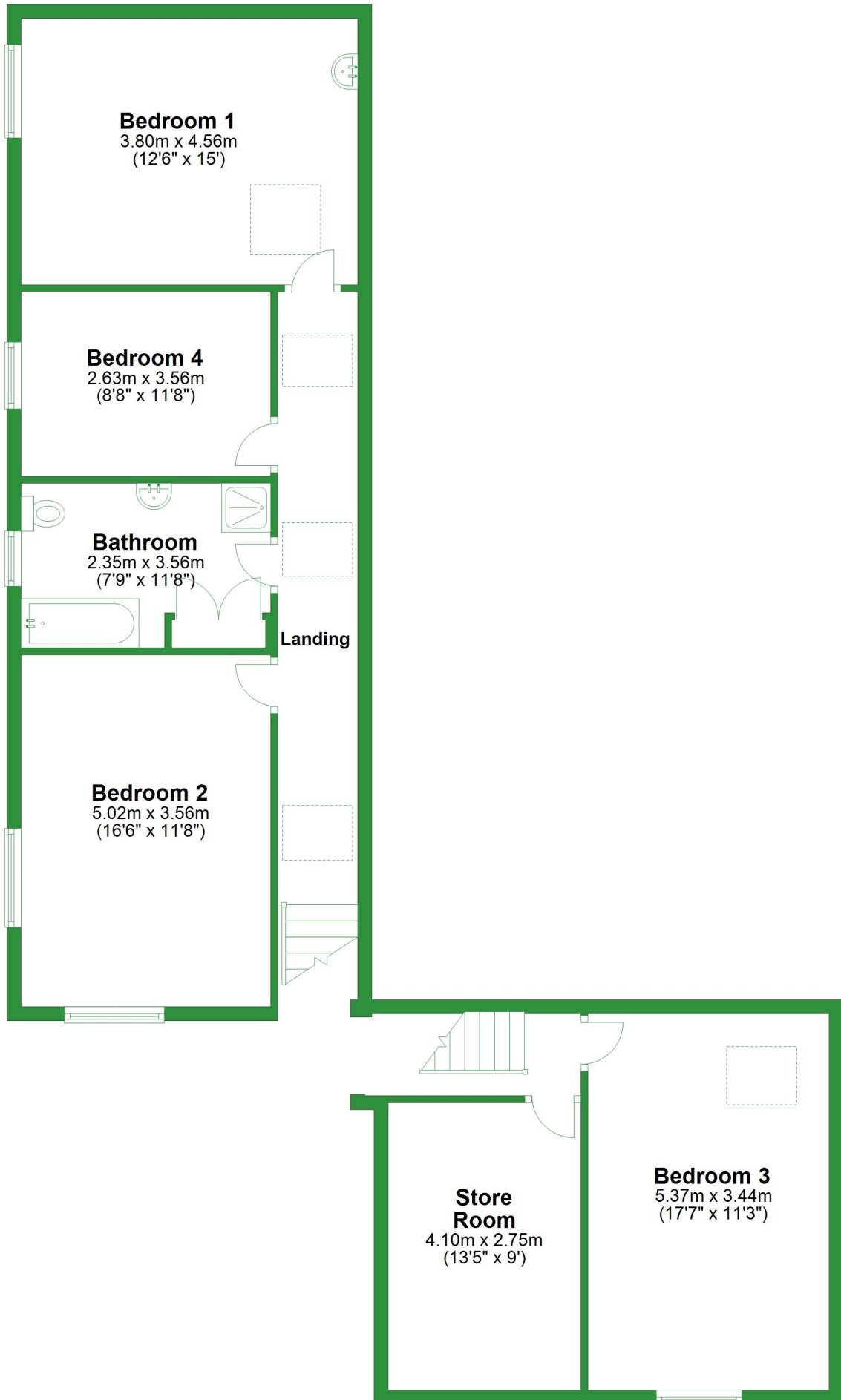


Total area: approx. 148.8 sq. metres (1601.5 sq. feet)

For illustrative purposes only. Not to scale. All sizes are approximate.  
Plan produced using PlanUp.

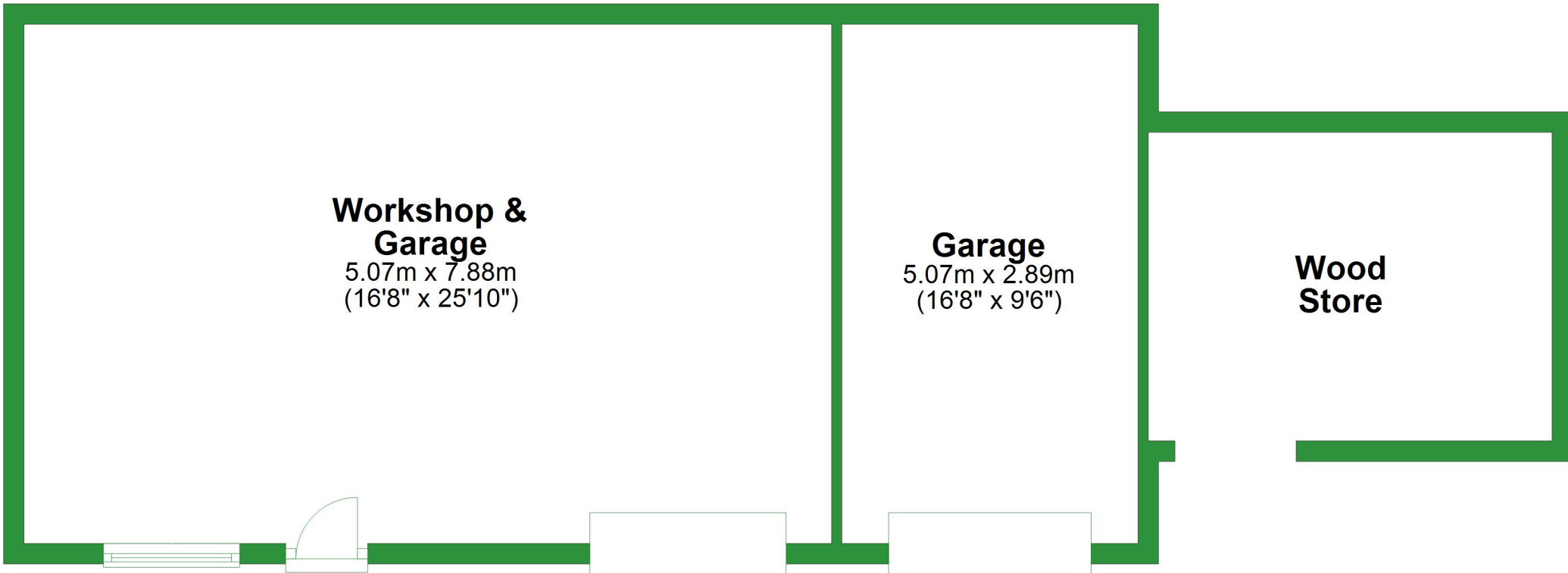
# First Floor

Approx. 100.9 sq. metres (1086.6 sq. feet)



## Ground Floor

Approx. 67.3 sq. metres (724.2 sq. feet)

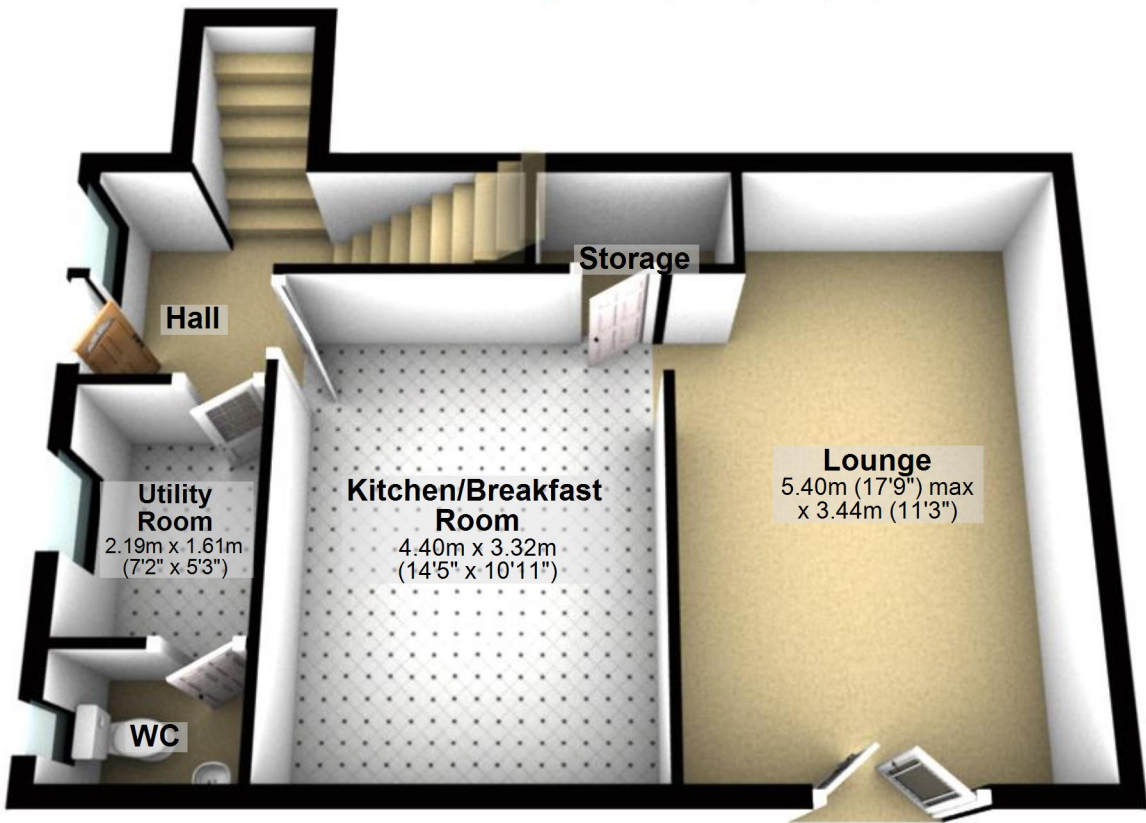


Total area: approx. 67.3 sq. metres (724.2 sq. feet)

For illustrative purposes only. Not to scale. All sizes are approximate.  
Plan produced using PlanUp.

## Ground Floor

Approx. 47.8 sq. metres (515.0 sq. feet)

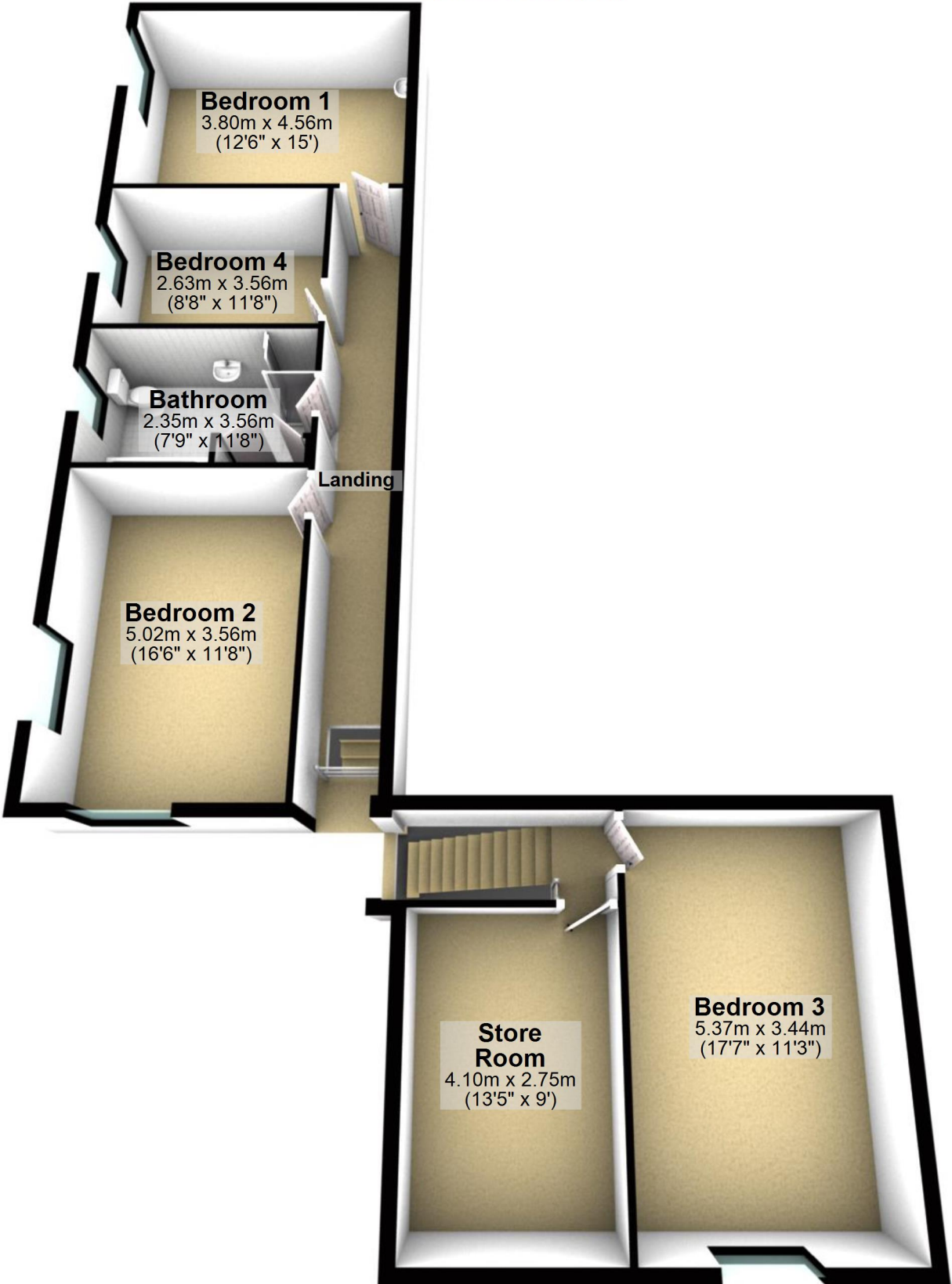


Total area: approx. 148.8 sq. metres (1601.5 sq. feet)

For illustrative purposes only. Not to scale. All sizes are approximate.  
Plan produced using PlanUp.

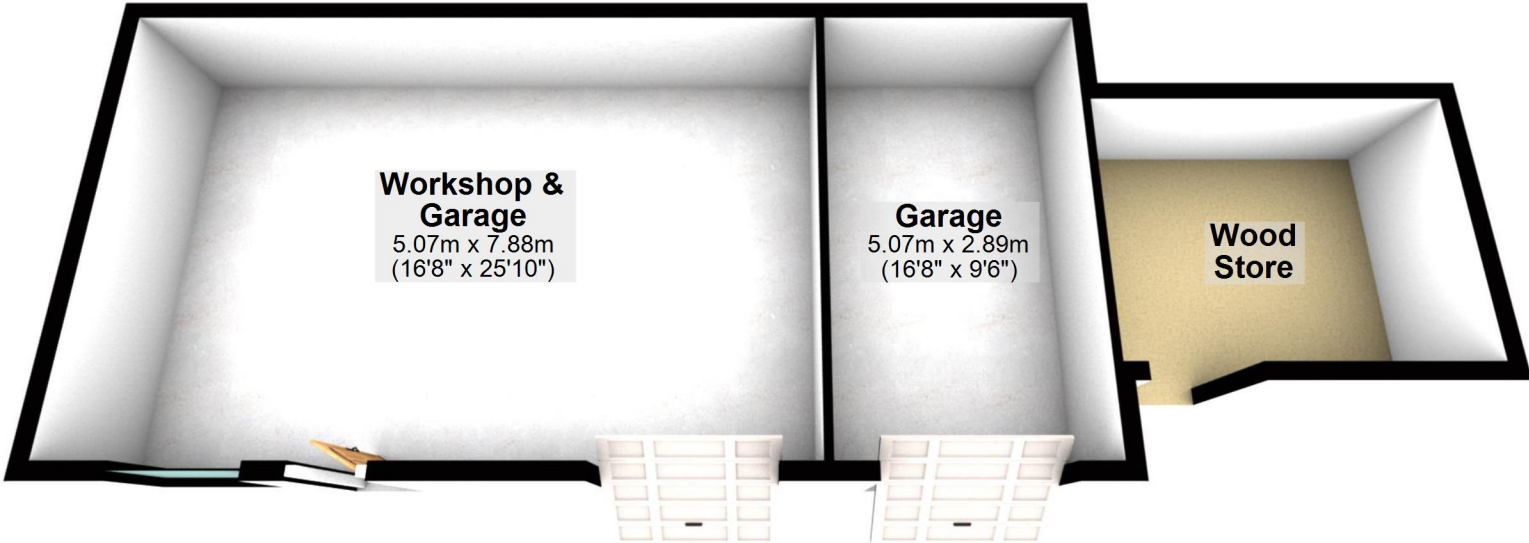
## First Floor

Approx. 100.9 sq. metres (1086.6 sq. feet)



## Ground Floor

Approx. 67.3 sq. metres (724.2 sq. feet)



Total area: approx. 67.3 sq. metres (724.2 sq. feet)

For illustrative purposes only. Not to scale. All sizes are approximate.  
Plan produced using PlanUp.