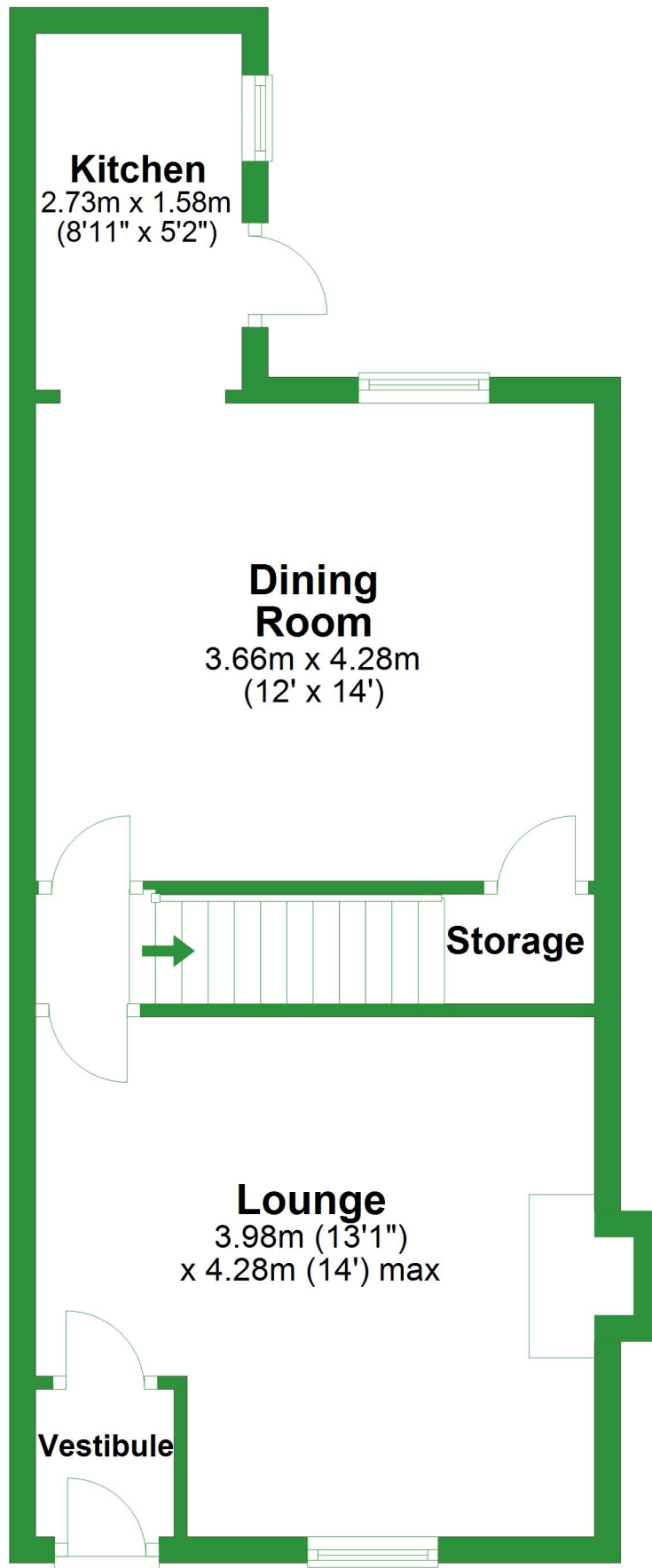


# Ground Floor

Approx. 41.6 sq. metres (447.9 sq. feet)

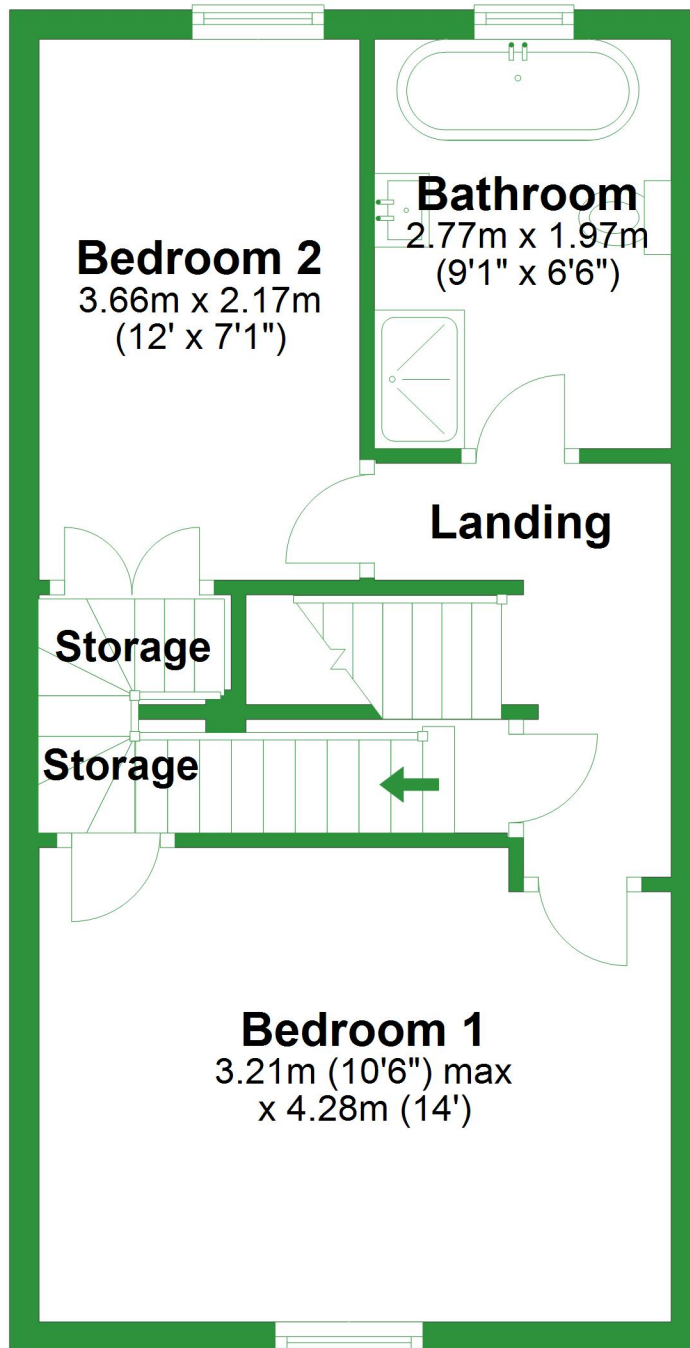


Total area: approx. 95.9 sq. metres (1032.7 sq. feet)

For illustrative purposes only. Not to scale. All sizes are approximate.  
Plan produced using PlanUp.

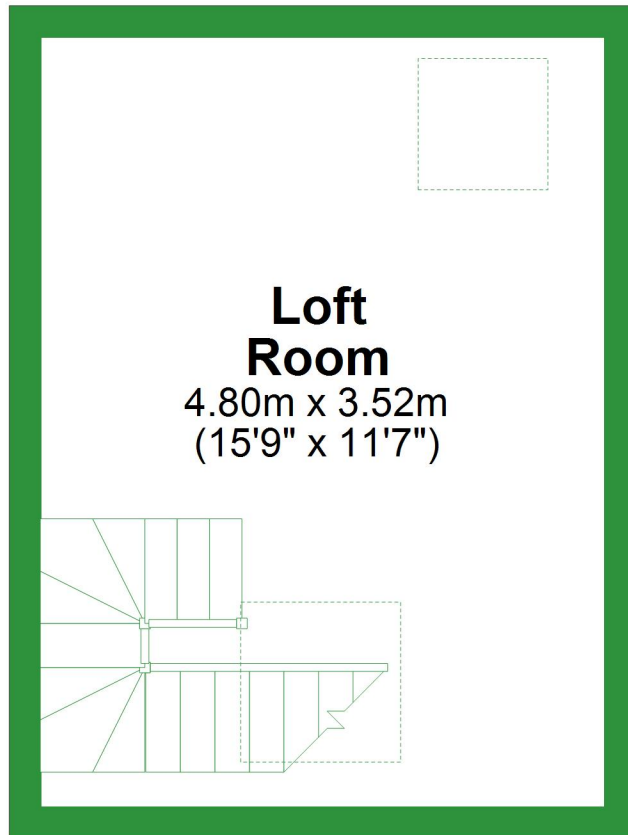
# First Floor

Approx. 37.4 sq. metres (403.0 sq. feet)



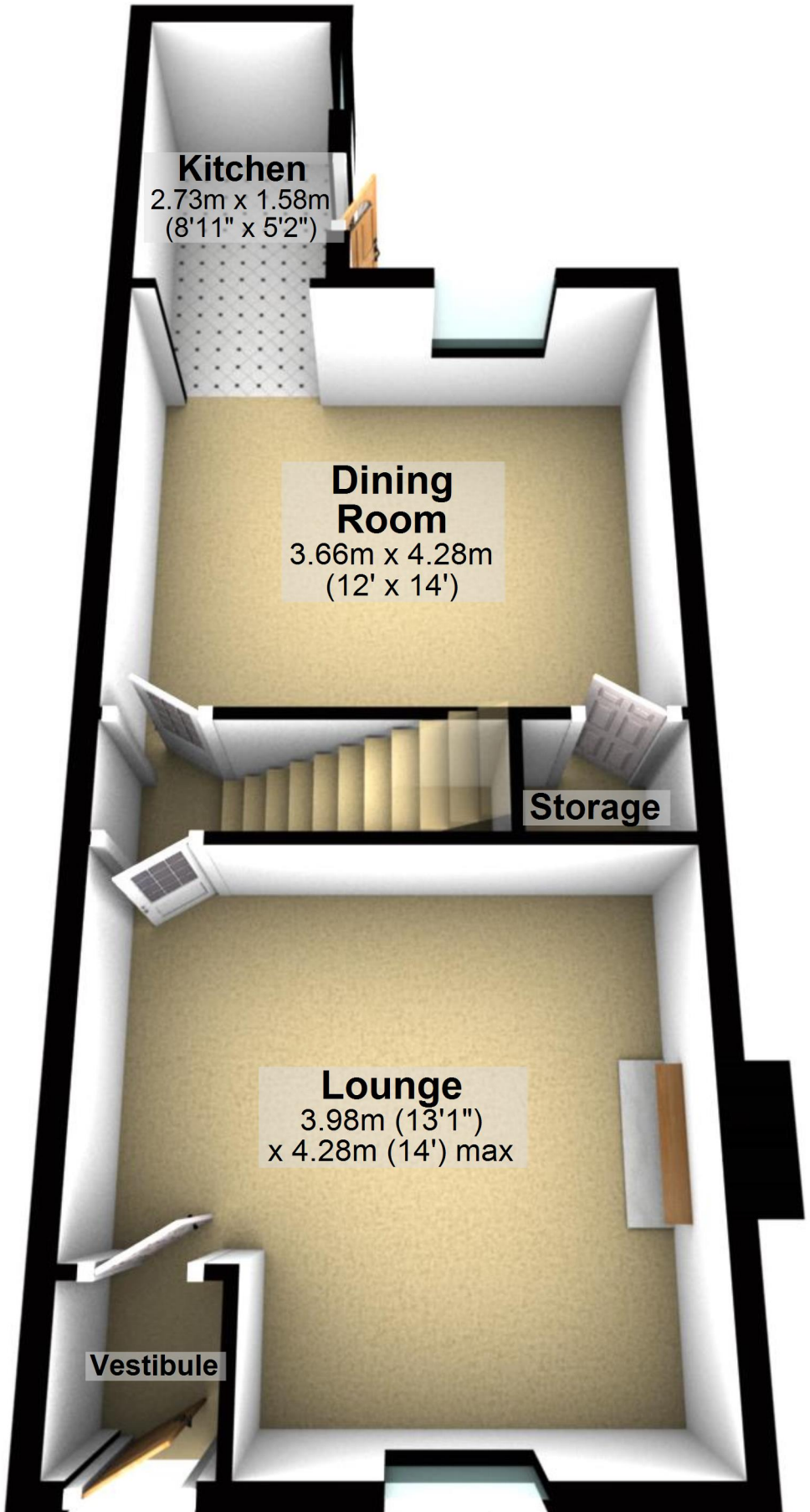
# Second Floor

Approx. 16.9 sq. metres (181.9 sq. feet)



# Ground Floor

Approx. 41.6 sq. metres (447.9 sq. feet)



**Kitchen**  
2.73m x 1.58m  
(8'11" x 5'2")

**Dining Room**  
3.66m x 4.28m  
(12' x 14')

**Storage**

**Lounge**  
3.98m (13'1")  
x 4.28m (14') max

**Vestibule**

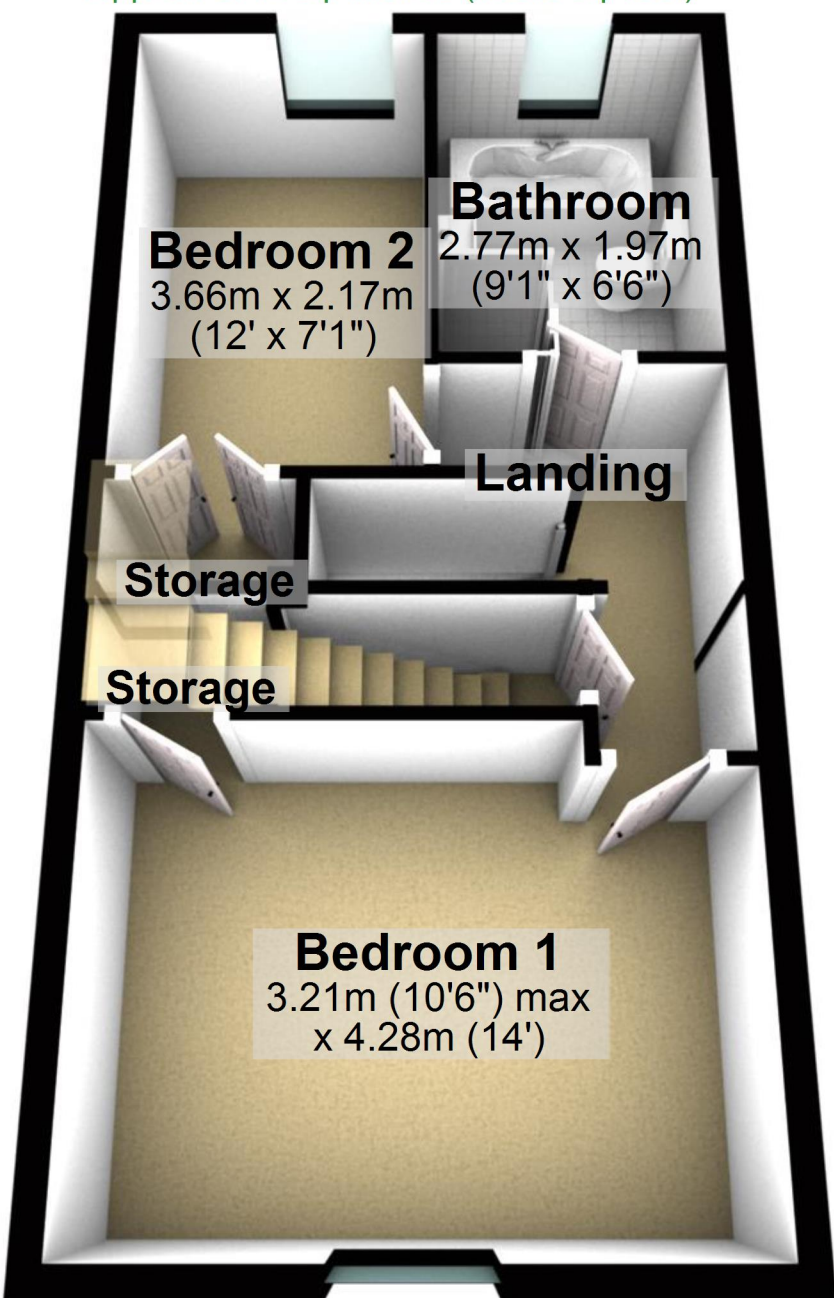
Total area: approx. 95.9 sq. metres (1032.7 sq. feet)

For illustrative purposes only. Not to scale. All sizes are approximate.

Plan produced using PlanUp.

# First Floor

Approx. 37.4 sq. metres (403.0 sq. feet)



## Second Floor

Approx. 16.9 sq. metres (181.9 sq. feet)



**Loft  
Room**  
4.80m x 3.52m  
(15'9" x 11'7")