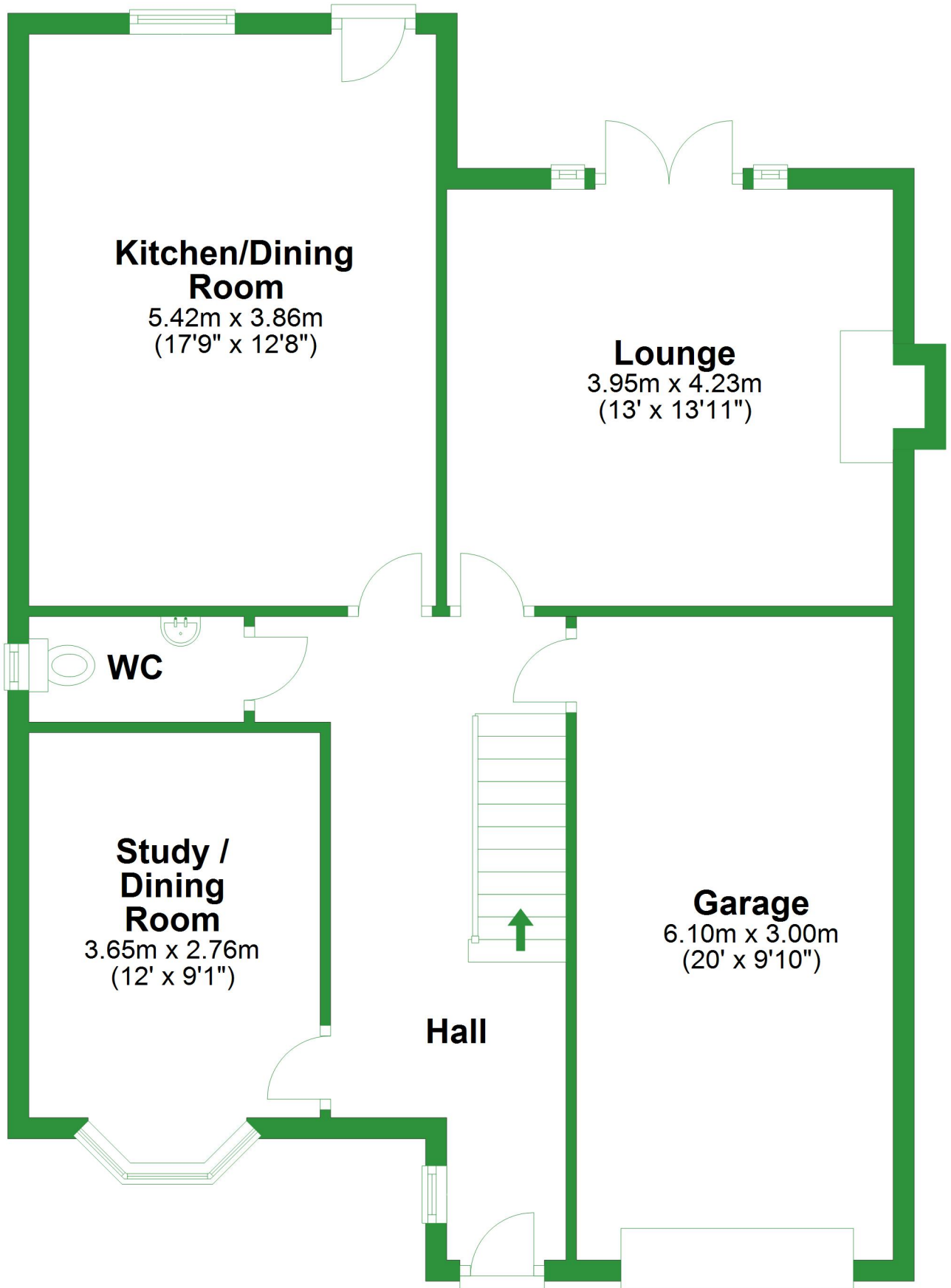


# Ground Floor

Approx. 83.6 sq. metres (899.9 sq. feet)



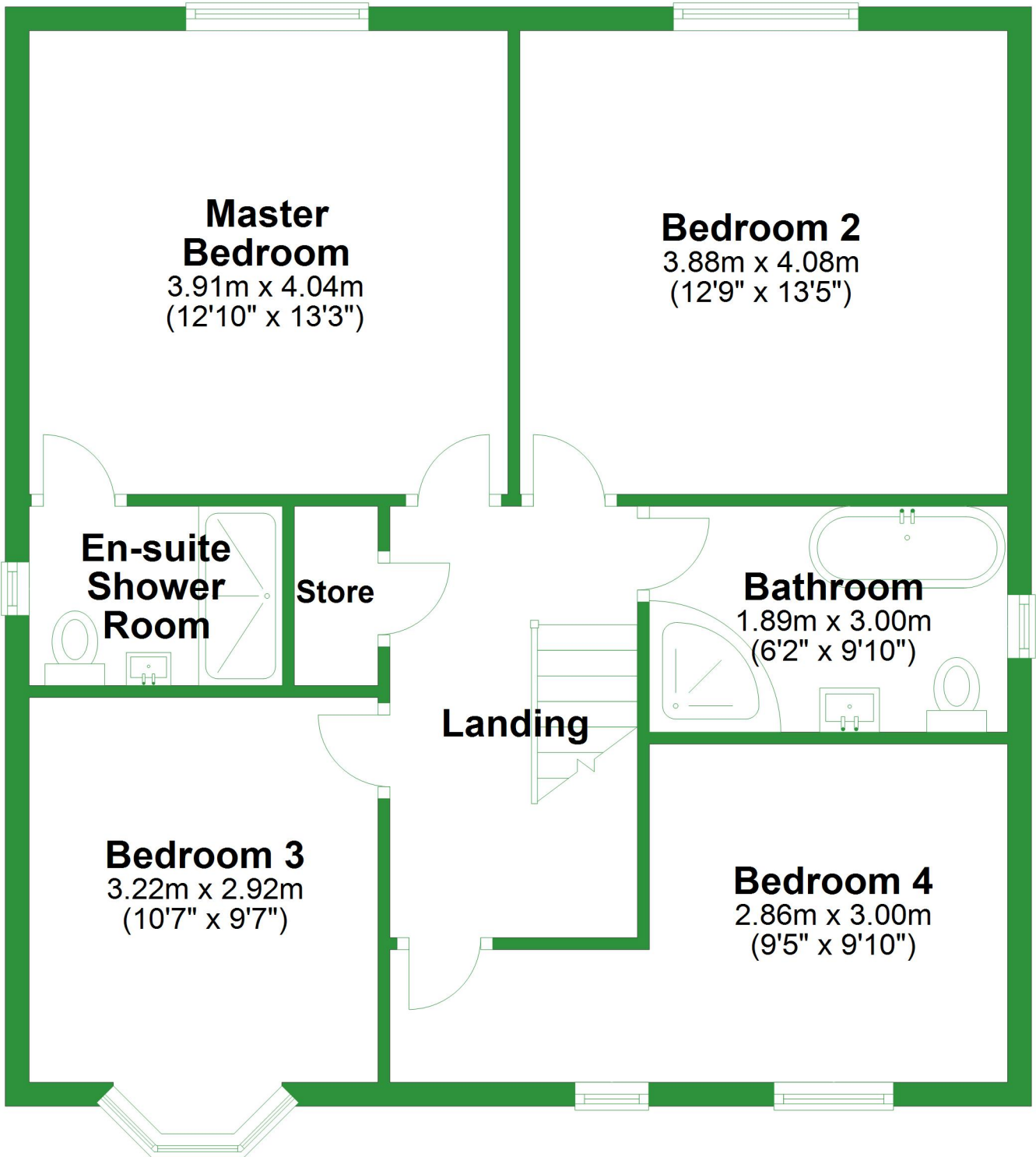
Total area: approx. 155.8 sq. metres (1677.0 sq. feet)

For illustrative purposes only. Not to scale. All sizes are approximate.

Plan produced using PlanUp.

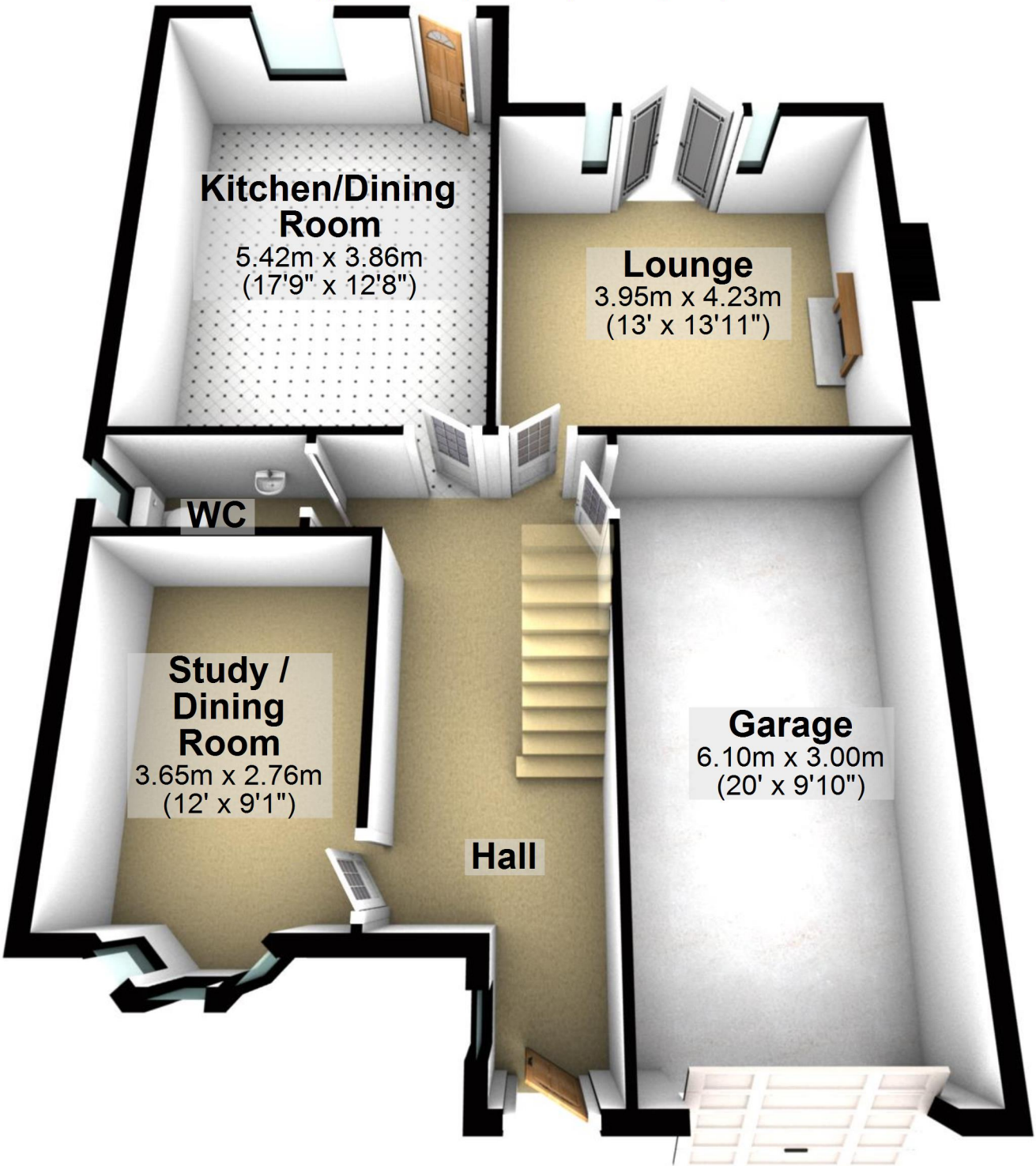
# First Floor

Approx. 72.2 sq. metres (777.1 sq. feet)



## Ground Floor

Approx. 83.6 sq. metres (899.9 sq. feet)



Total area: approx. 155.8 sq. metres (1677.0 sq. feet)

For illustrative purposes only. Not to scale. All sizes are approximate.

Plan produced using PlanUp.

# First Floor

Approx. 72.2 sq. metres (777.1 sq. feet)

