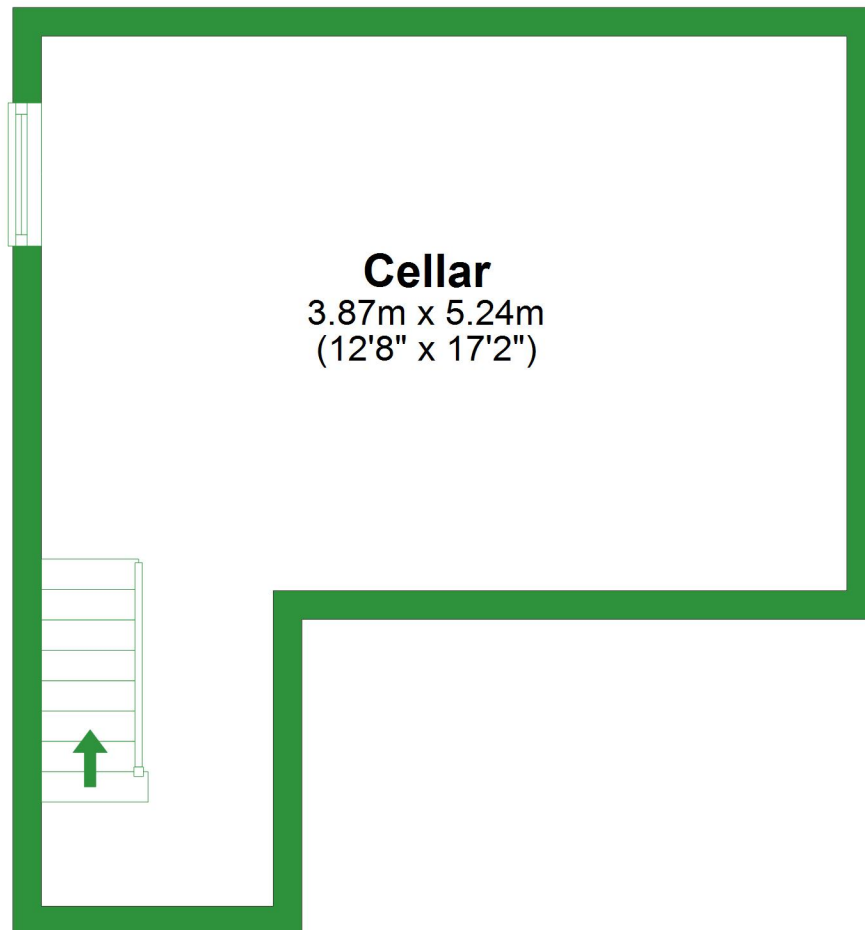


Basement

Approx. 19.1 sq. metres (205.8 sq. feet)

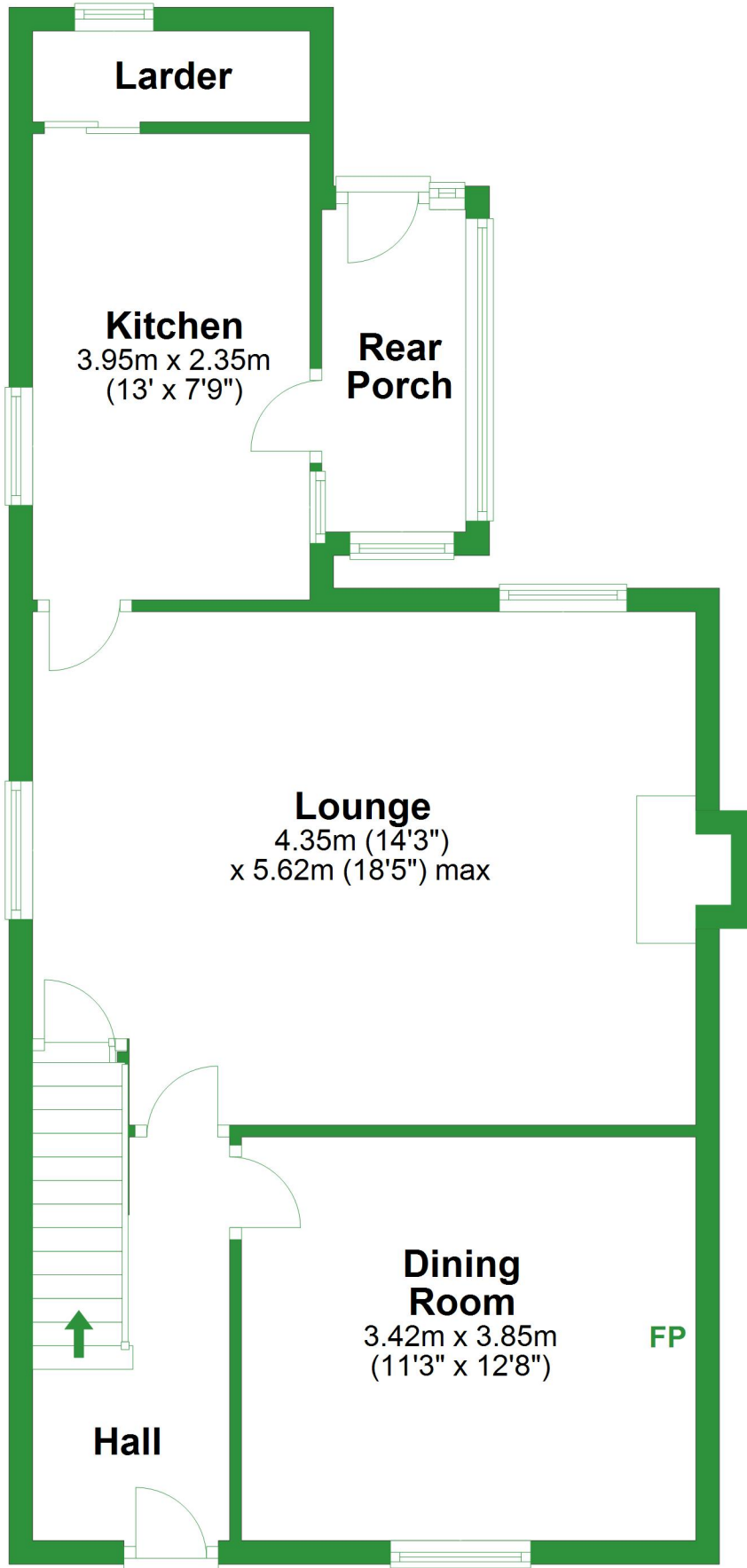


Total area: approx. 148.2 sq. metres (1595.4 sq. feet)

For illustrative purposes only. Not to scale. All sizes are approximate.
Plan produced using PlanUp.

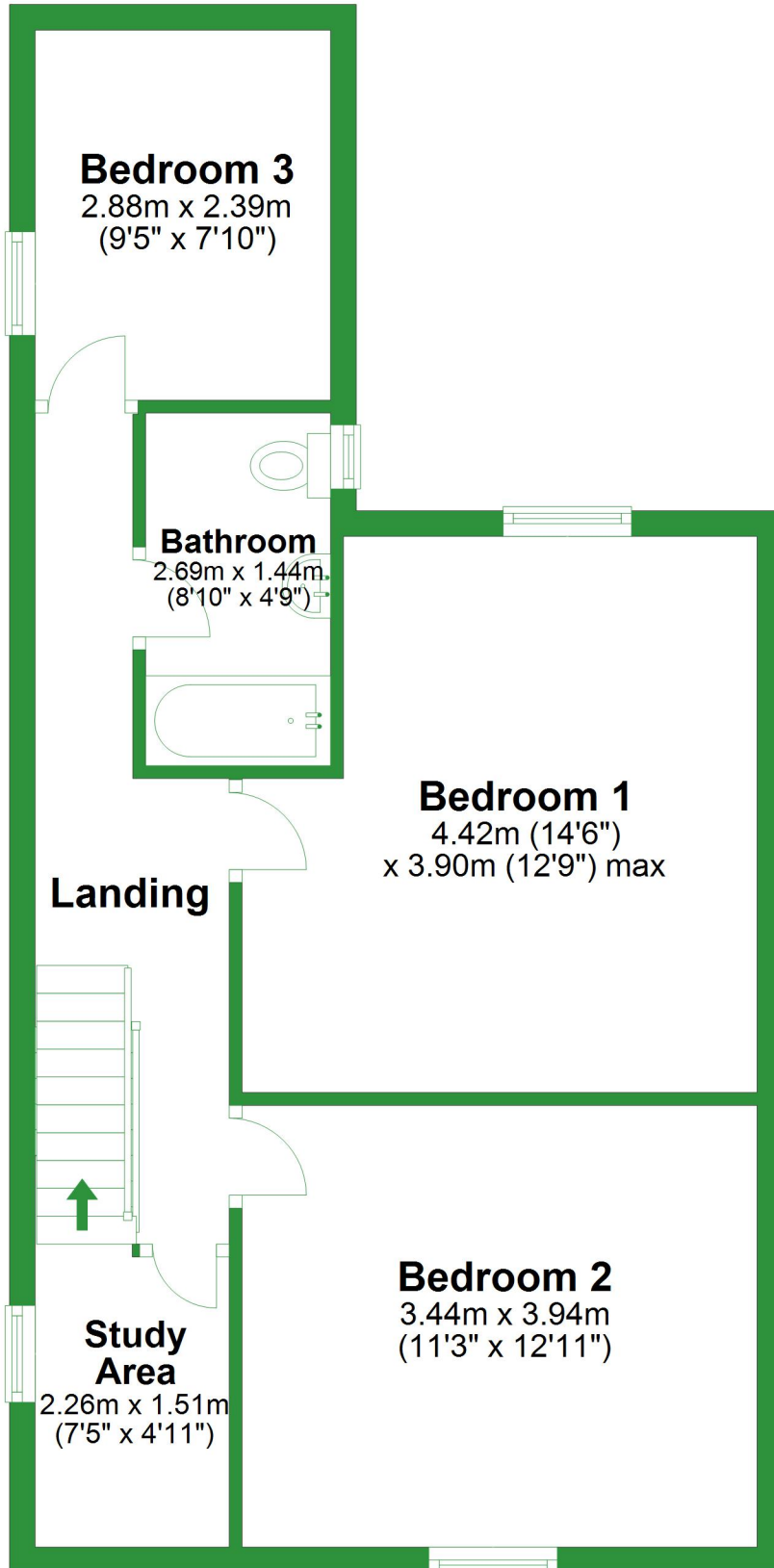
Ground Floor

Approx. 59.4 sq. metres (639.3 sq. feet)



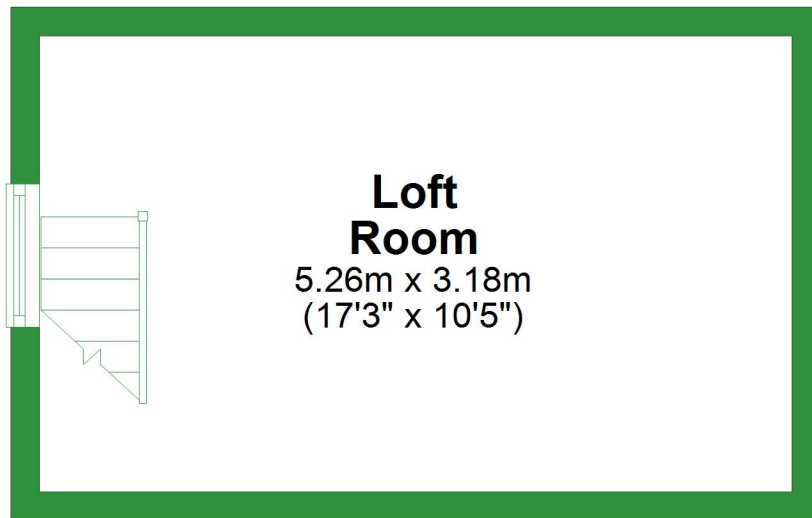
First Floor

Approx. 53.0 sq. metres (570.2 sq. feet)



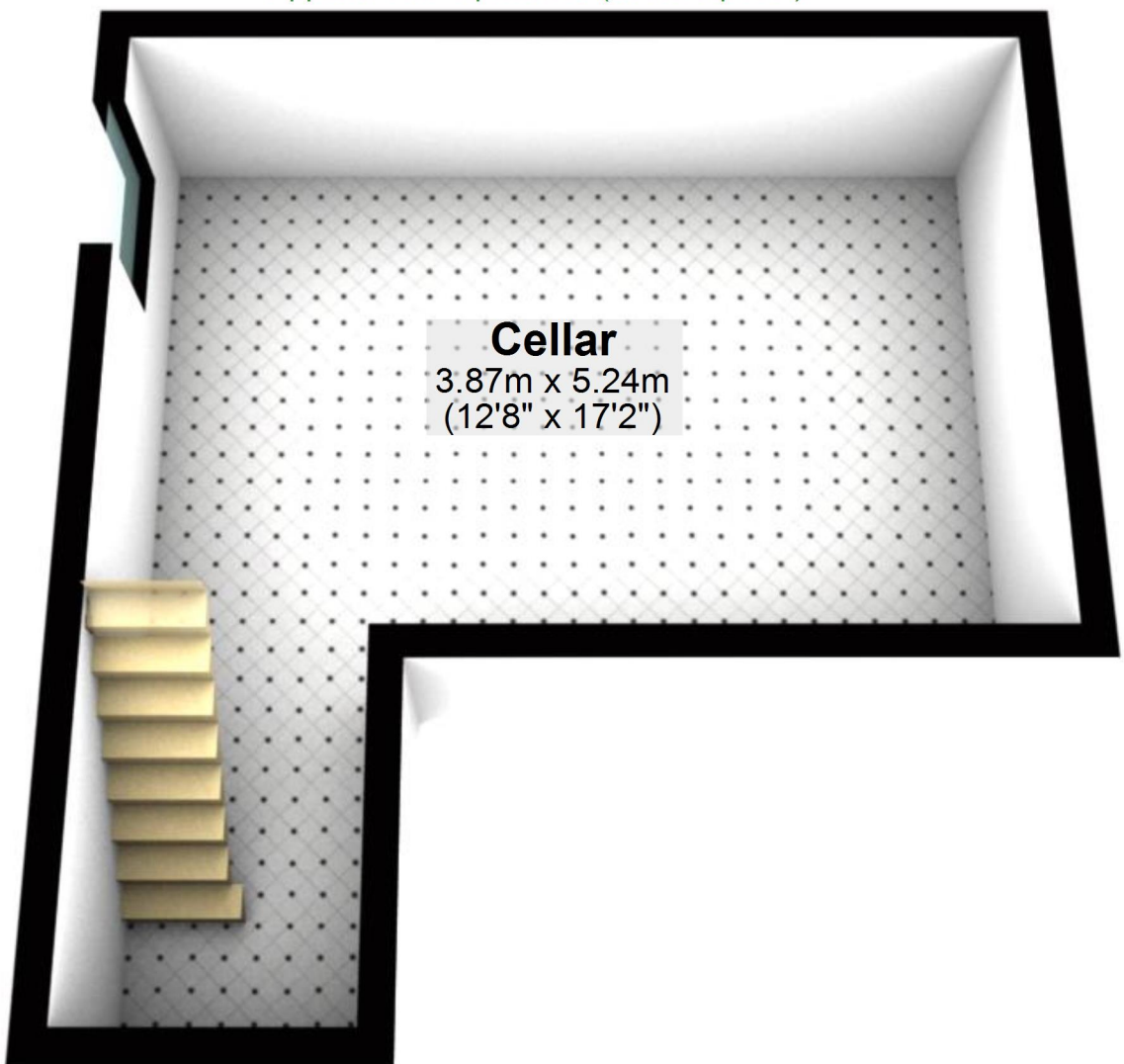
Second Floor

Approx. 16.7 sq. metres (180.0 sq. feet)



Basement

Approx. 19.1 sq. metres (205.8 sq. feet)



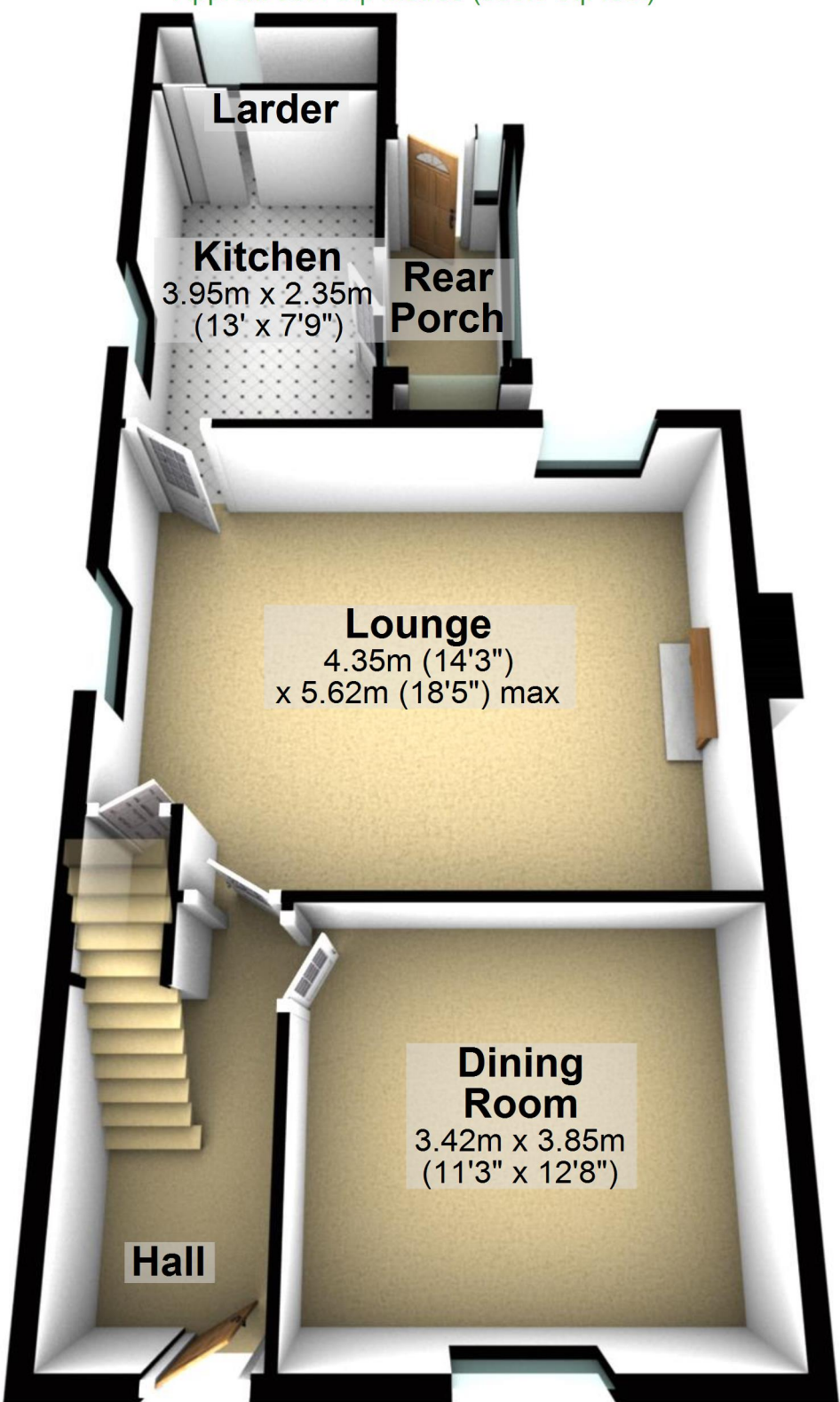
Total area: approx. 148.2 sq. metres (1595.4 sq. feet)

For illustrative purposes only. Not to scale. All sizes are approximate.

Plan produced using PlanUp.

Ground Floor

Approx. 59.4 sq. metres (639.3 sq. feet)



First Floor

Approx. 53.0 sq. metres (570.2 sq. feet)

Bedroom 3

2.88m x 2.39m
(9'5" x 7'10")

Bathroom

2.69m x 1.44m
(8'10" x 4'9")

Bedroom 1

4.42m (14'6")
x 3.90m (12'9") max

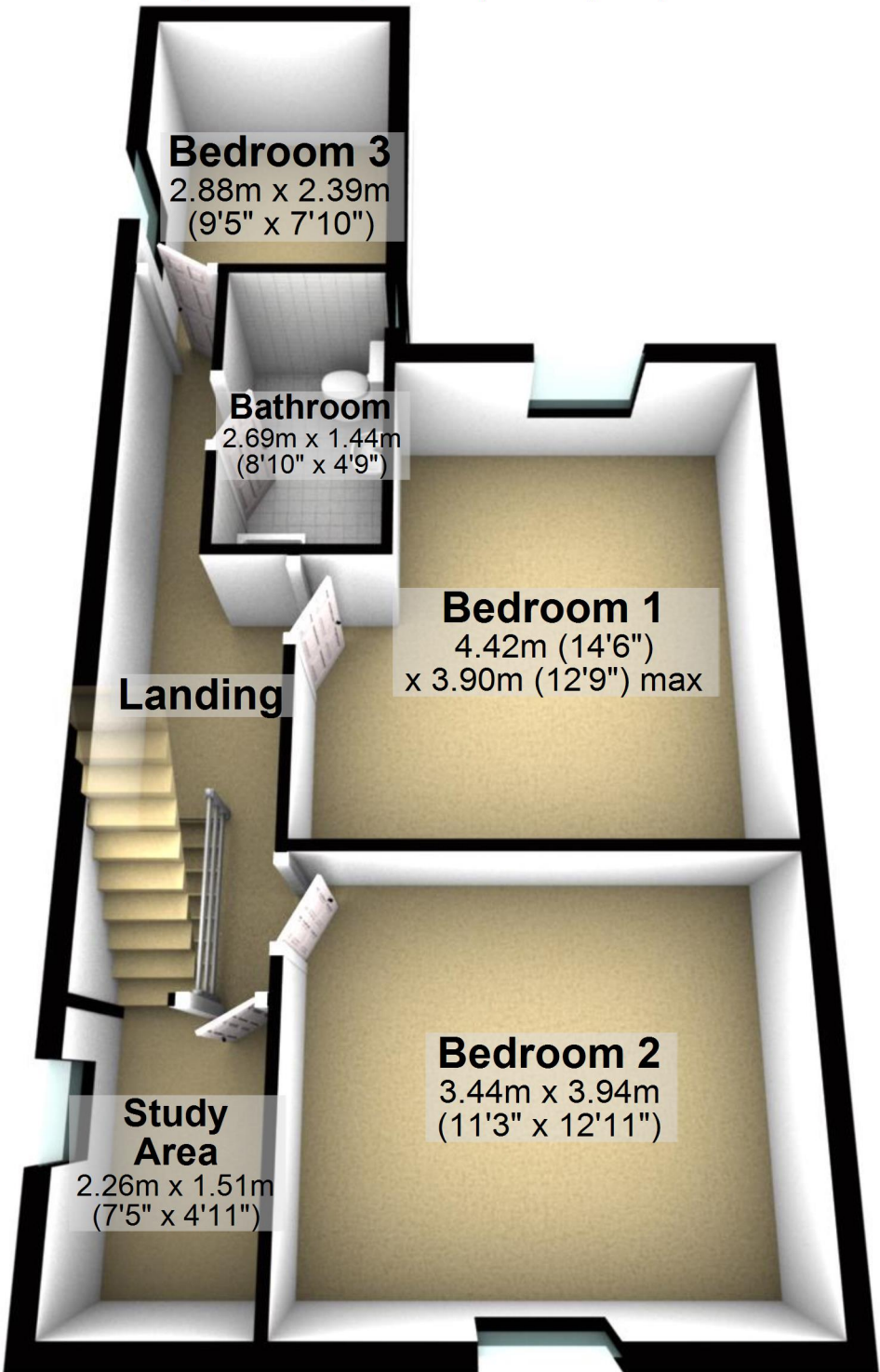
Landing

Bedroom 2

3.44m x 3.94m
(11'3" x 12'11")

Study Area

2.26m x 1.51m
(7'5" x 4'11")



Second Floor

Approx. 16.7 sq. metres (180.0 sq. feet)



**Loft
Room**
5.26m x 3.18m
(17'3" x 10'5")

A 3D architectural rendering of a loft room. The room has light-colored walls and a dark floor. On the left side, there is a staircase with a white metal railing. The room is viewed from a slightly elevated perspective, looking into the space. A black outline represents the floor plan's boundary. A semi-transparent white box contains the room's name and dimensions in both metric and imperial units.