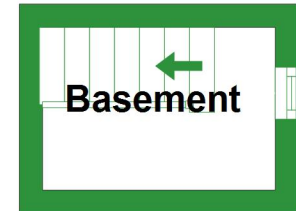


Basement

Approx. 2.8 sq. metres (30.1 sq. feet)

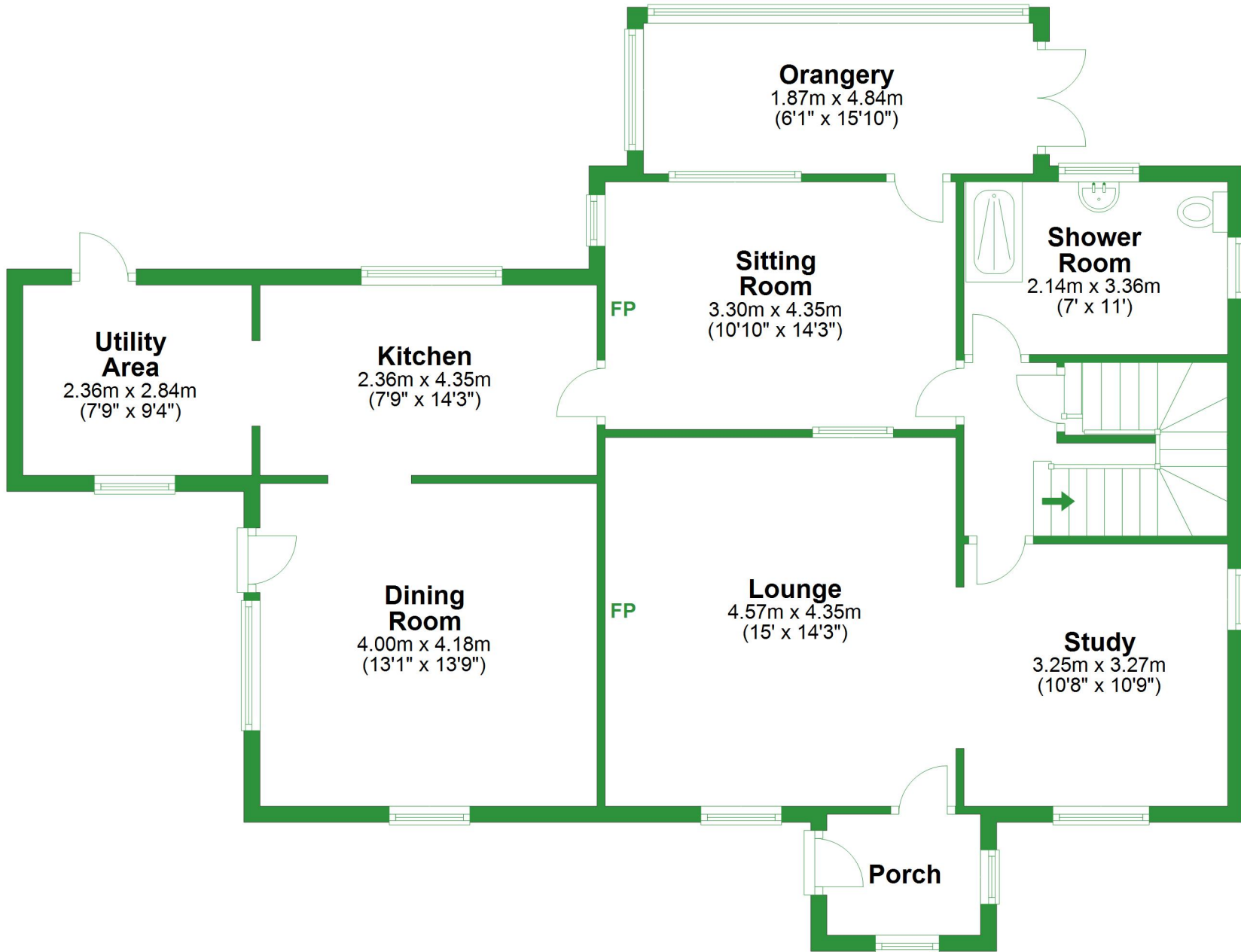


Total area: approx. 218.0 sq. metres (2346.5 sq. feet)

For illustrative purposes only. Not to scale. All sizes are approximate.
Plan produced using PlanUp.

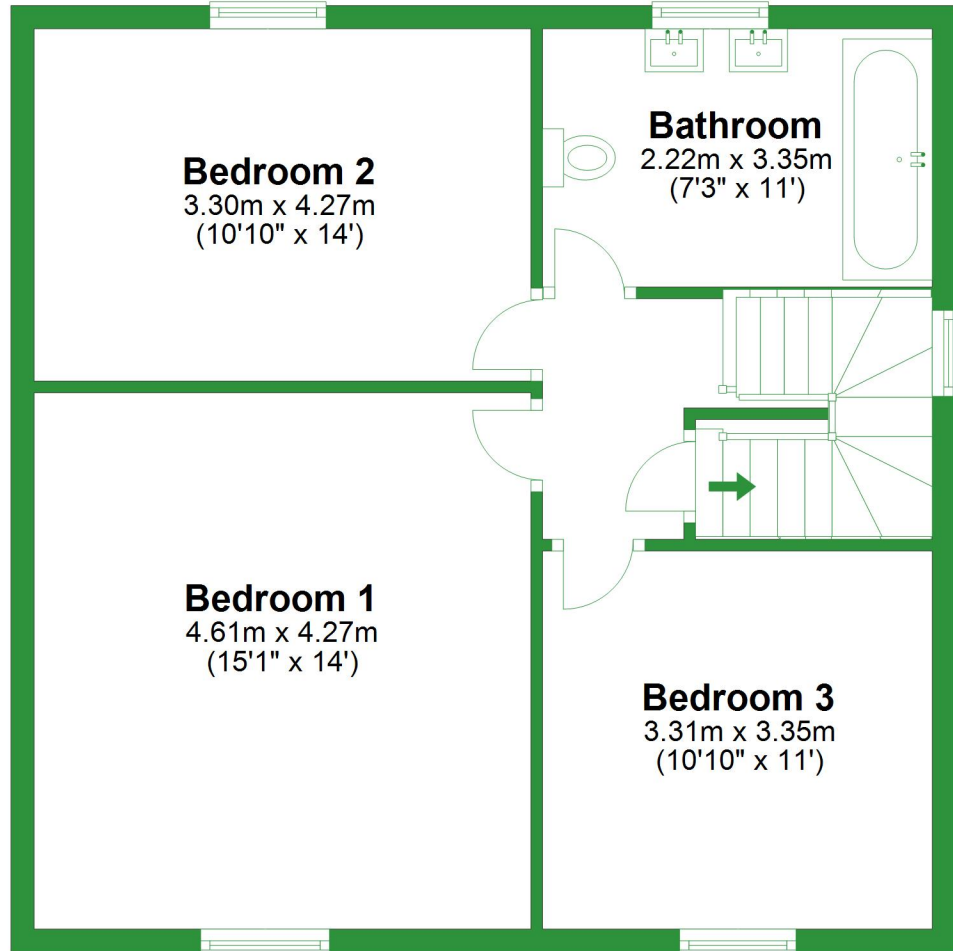
Ground Floor

Approx. 106.9 sq. metres (1150.4 sq. feet)



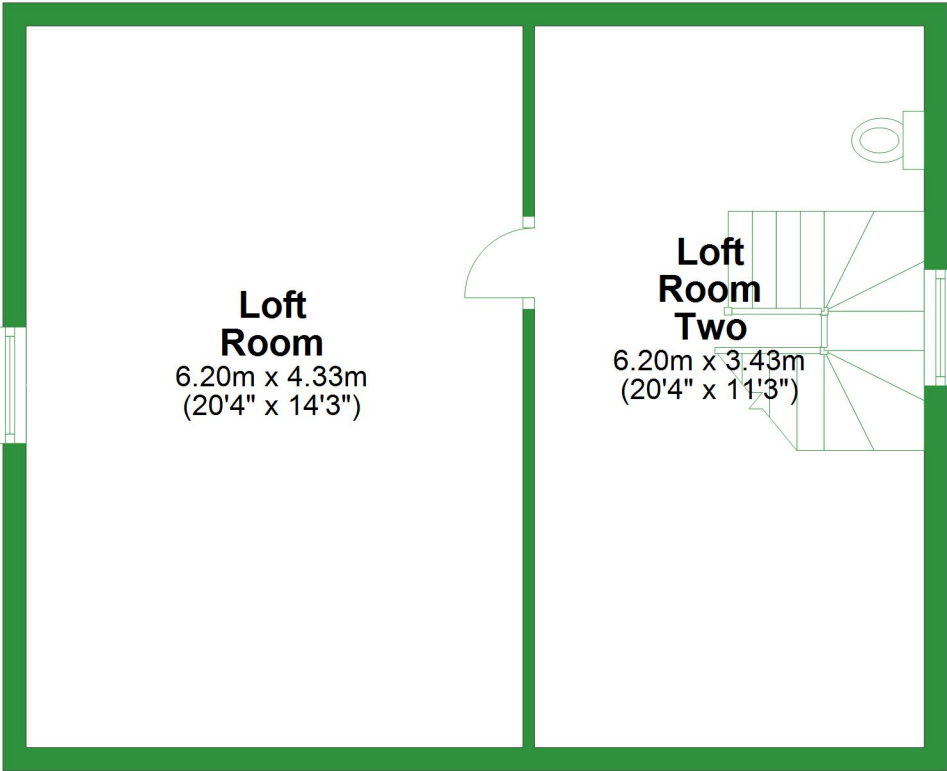
First Floor

Approx. 59.9 sq. metres (645.3 sq. feet)



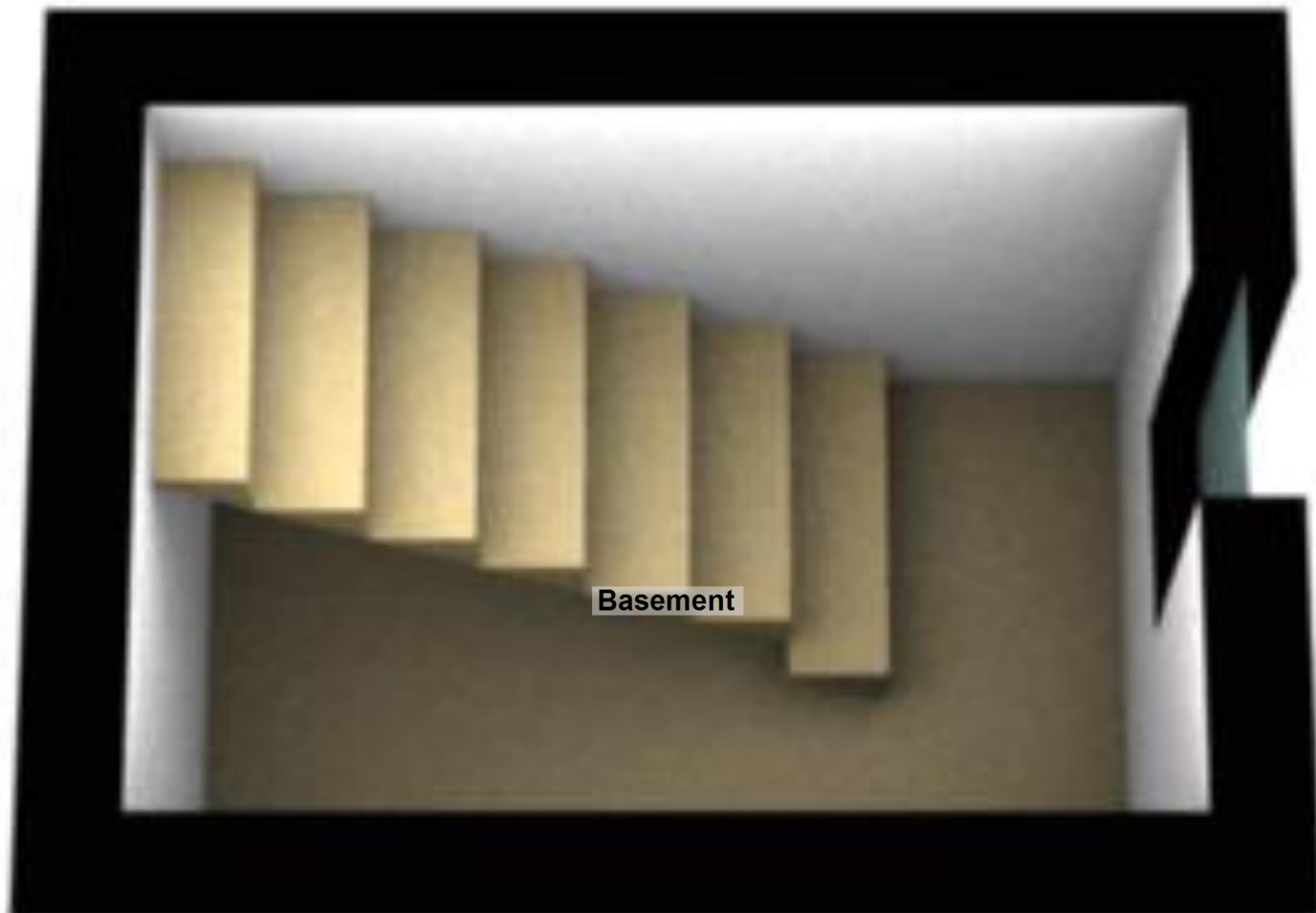
Second Floor

Approx. 48.4 sq. metres (520.7 sq. feet)



Basement

Approx. 2.8 sq. metres (30.1 sq. feet)



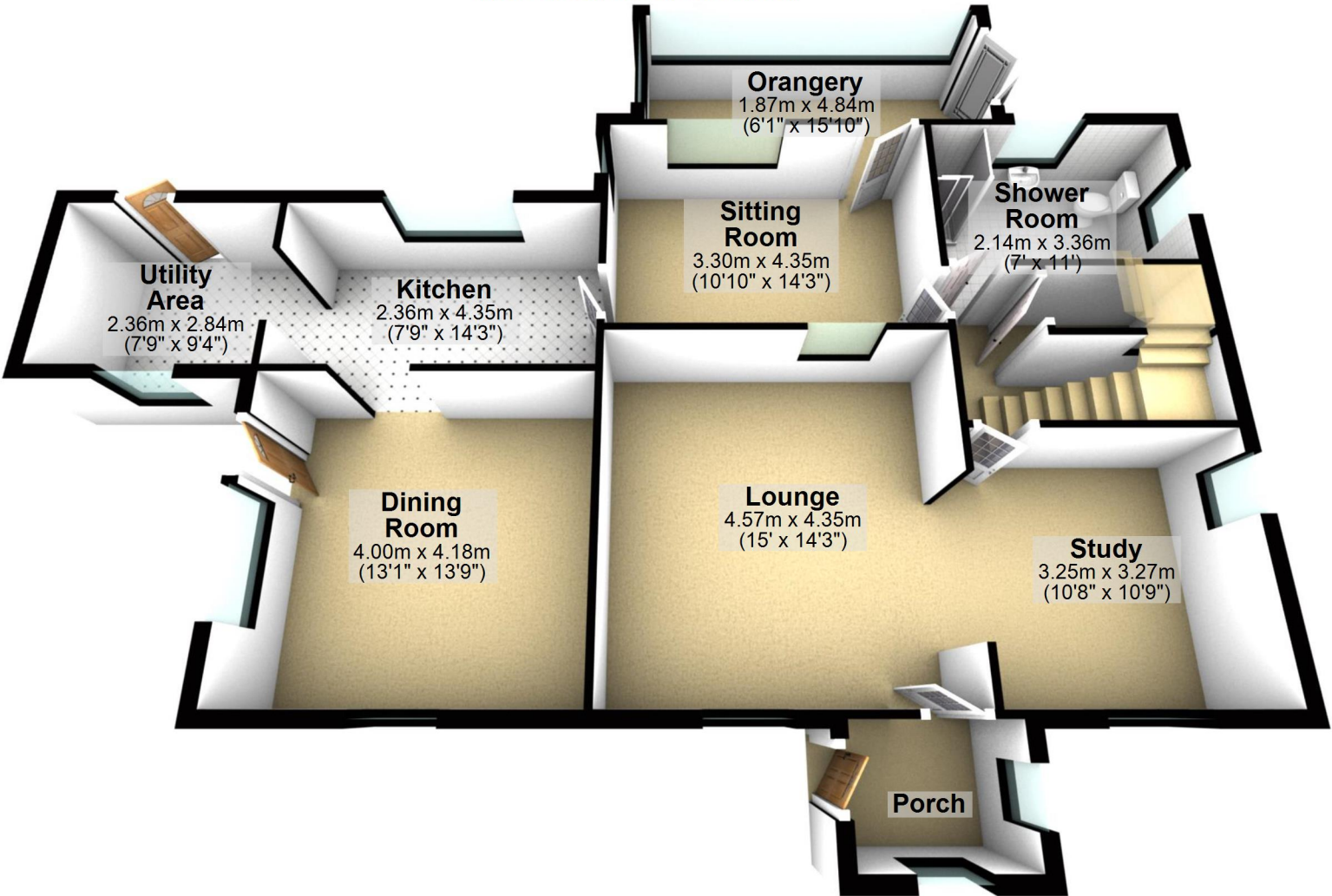
Basement

Total area: approx. 218.0 sq. metres (2346.5 sq. feet)

For illustrative purposes only. Not to scale. All sizes are approximate.
Plan produced using PlanUp.

Ground Floor

Approx. 106.9 sq. metres (1150.4 sq. feet)



First Floor

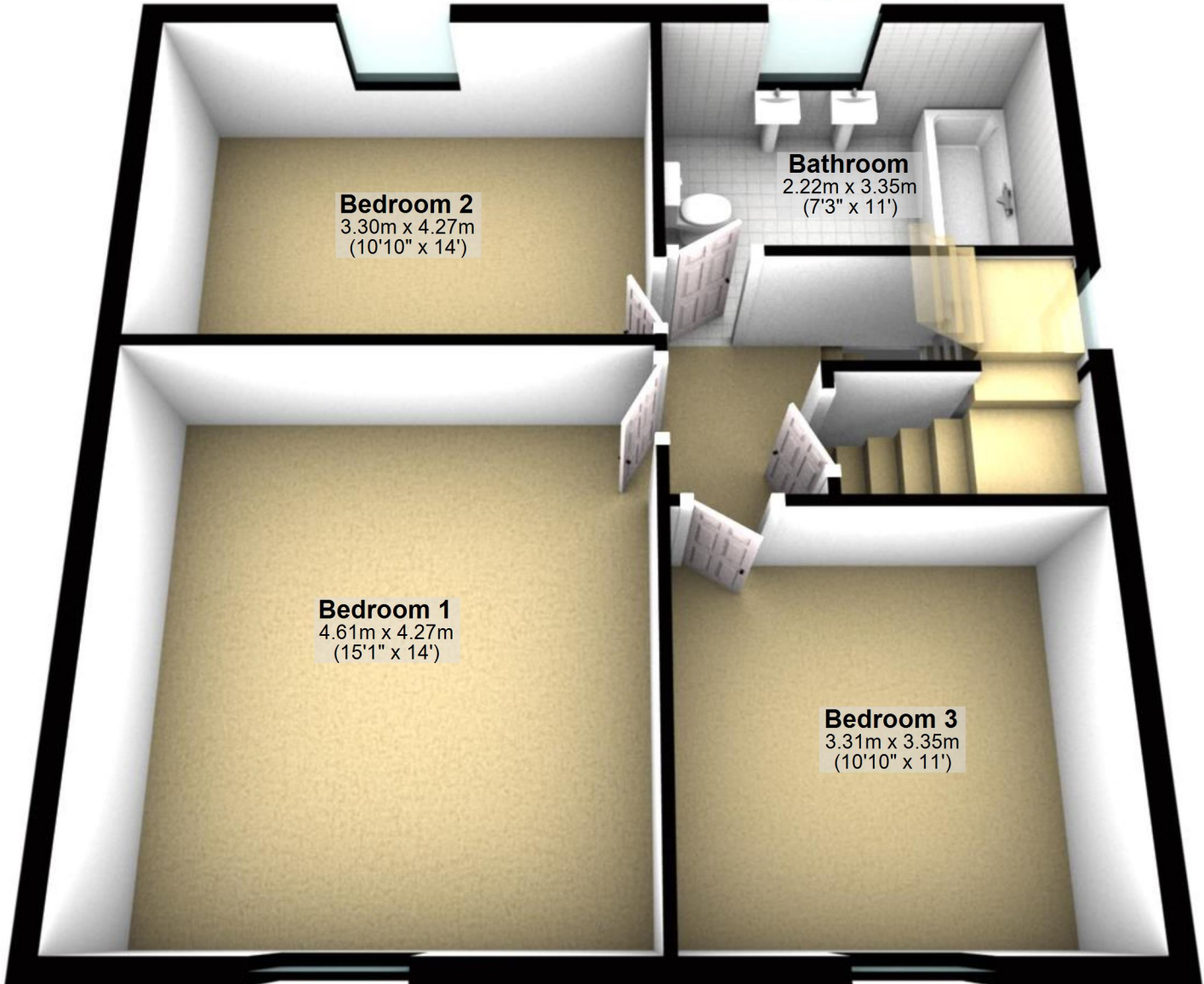
Approx. 59.9 sq. metres (645.3 sq. feet)

Bedroom 2
3.30m x 4.27m
(10'10" x 14')

Bathroom
2.22m x 3.35m
(7'3" x 11')

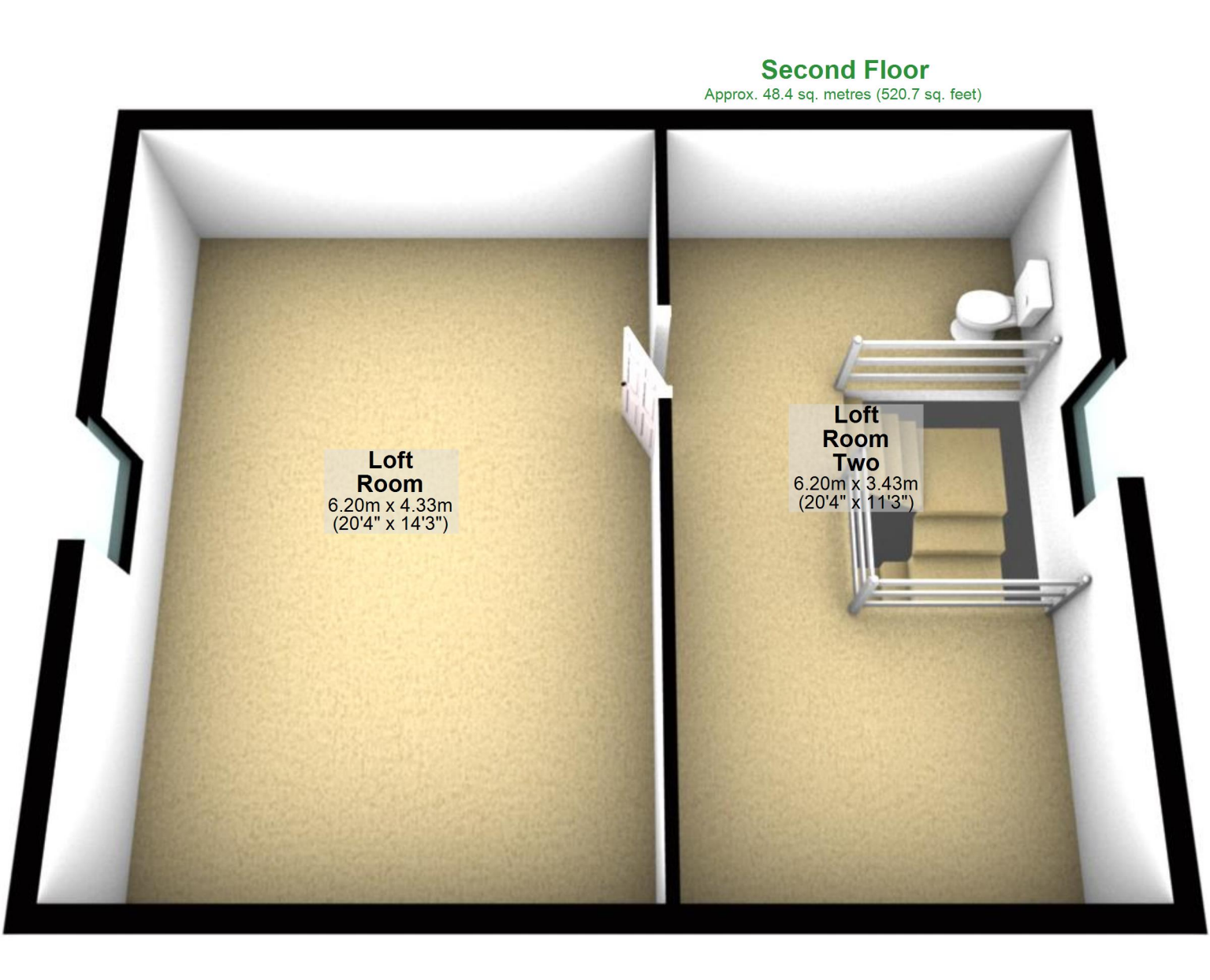
Bedroom 1
4.61m x 4.27m
(15'1" x 14')

Bedroom 3
3.31m x 3.35m
(10'10" x 11')



Second Floor

Approx. 48.4 sq. metres (520.7 sq. feet)



**Loft
Room**
6.20m x 4.33m
(20'4" x 14'3")

**Loft
Room
Two**
6.20m x 3.43m
(20'4" x 11'3")