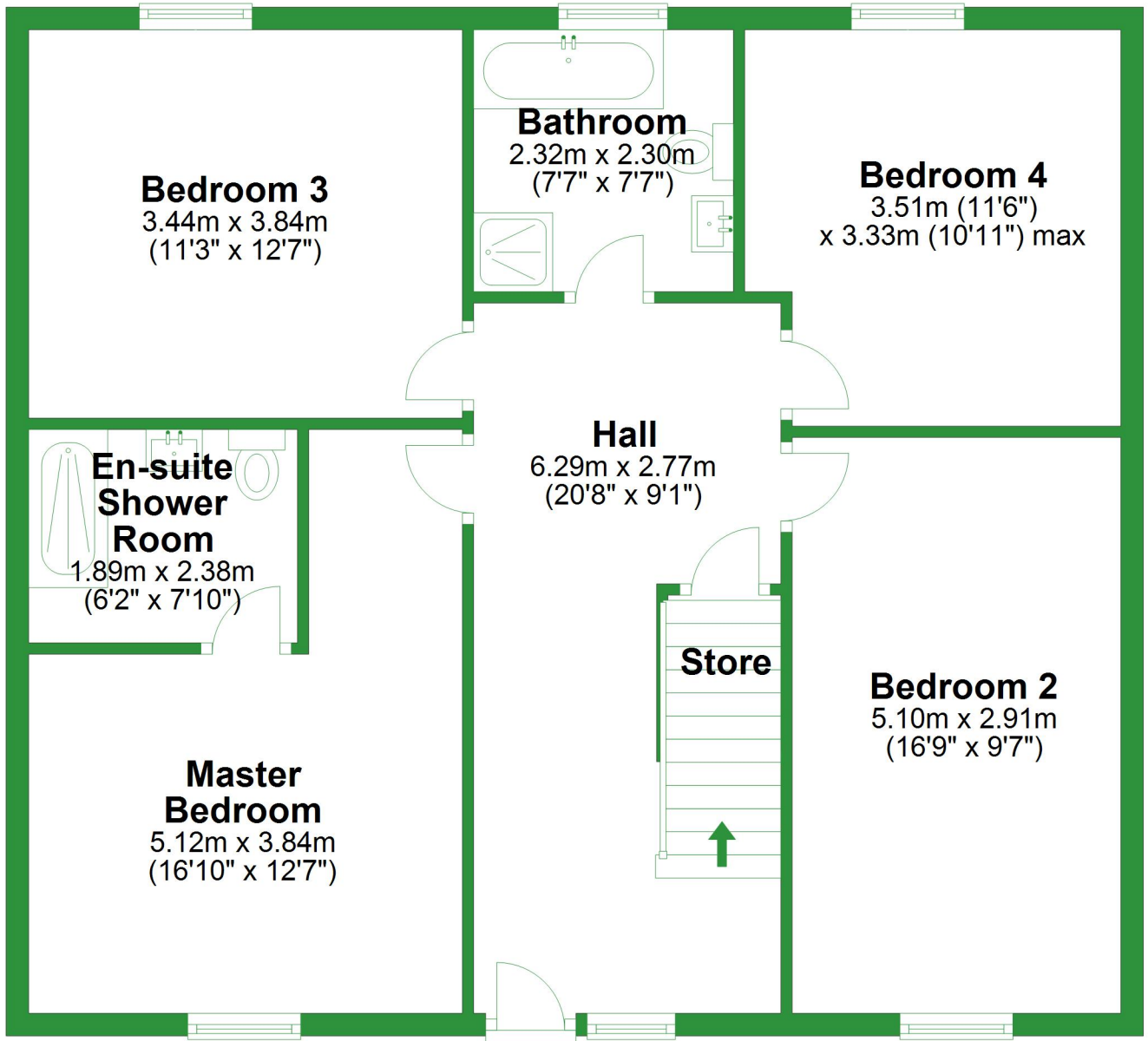


Ground Floor

Approx. 84.2 sq. metres (906.6 sq. feet)



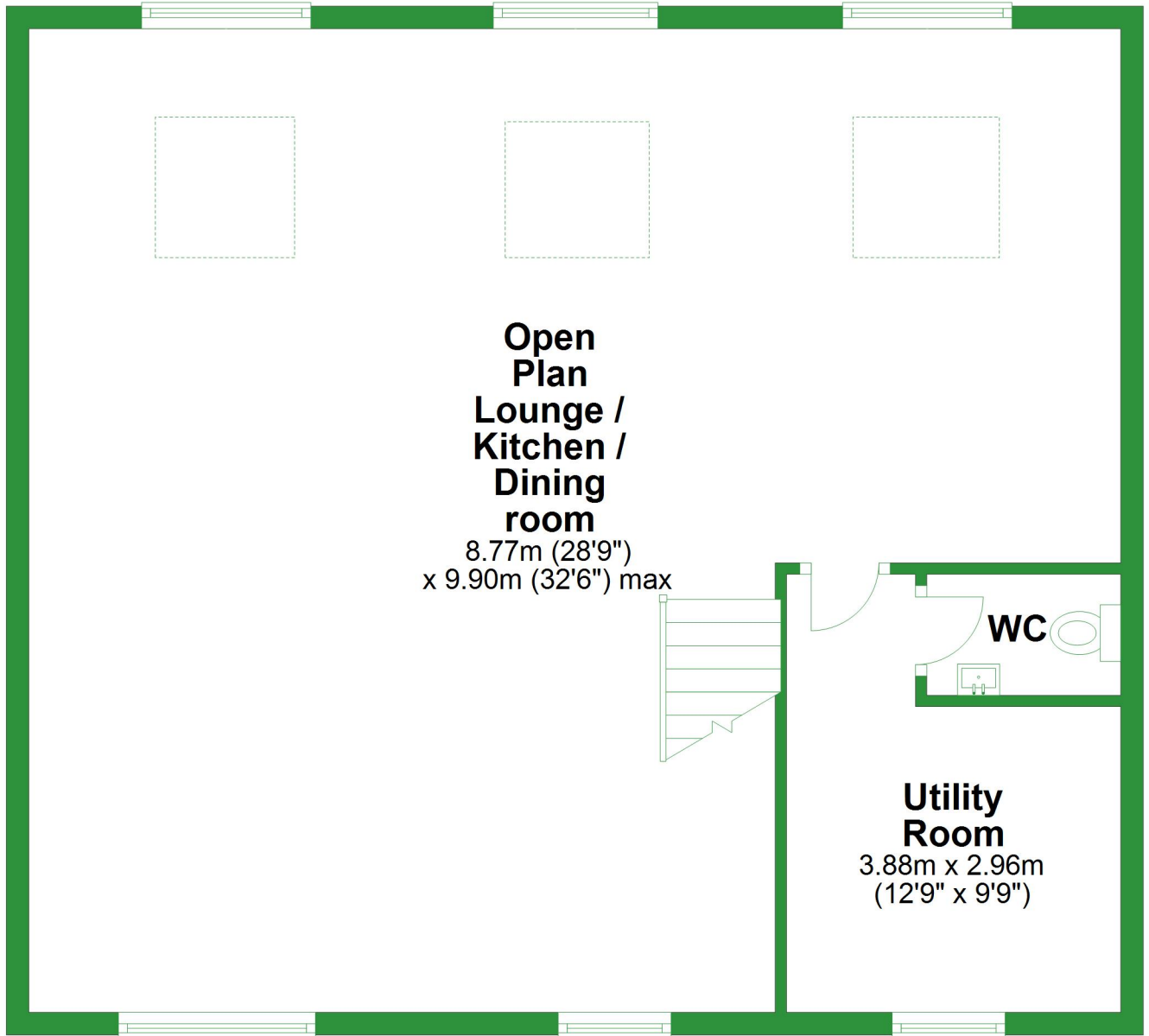
Total area: approx. 168.5 sq. metres (1813.2 sq. feet)

For illustrative purposes only. Not to scale. All sizes are approximate.

Plan produced using PlanUp.

First Floor

Approx. 84.2 sq. metres (906.6 sq. feet)



**Open
Plan
Lounge /
Kitchen /
Dining
room**

8.77m (28'9")
x 9.90m (32'6") max



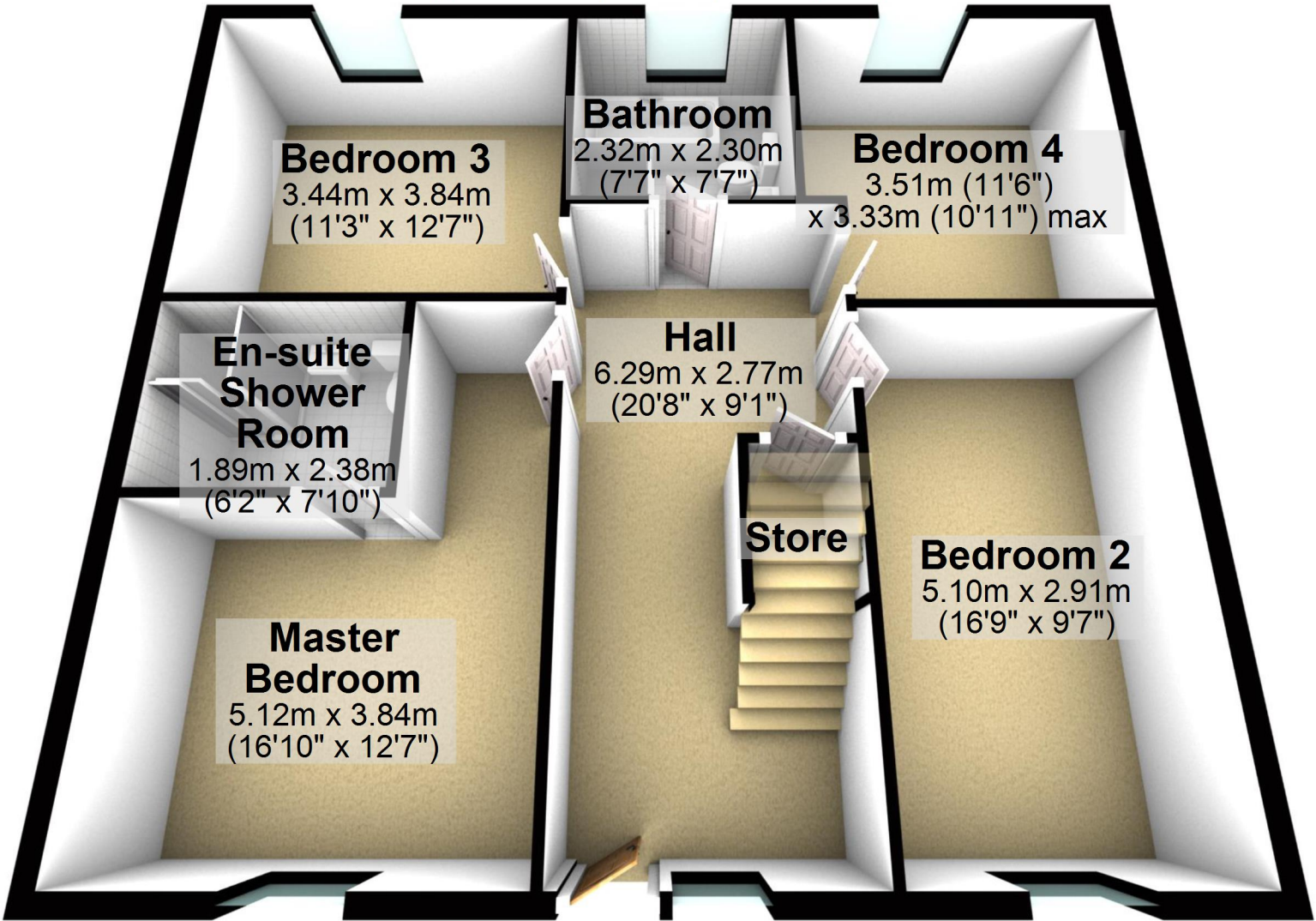
WC

**Utility
Room**

3.88m x 2.96m
(12'9" x 9'9")

Ground Floor

Approx. 84.2 sq. metres (906.6 sq. feet)

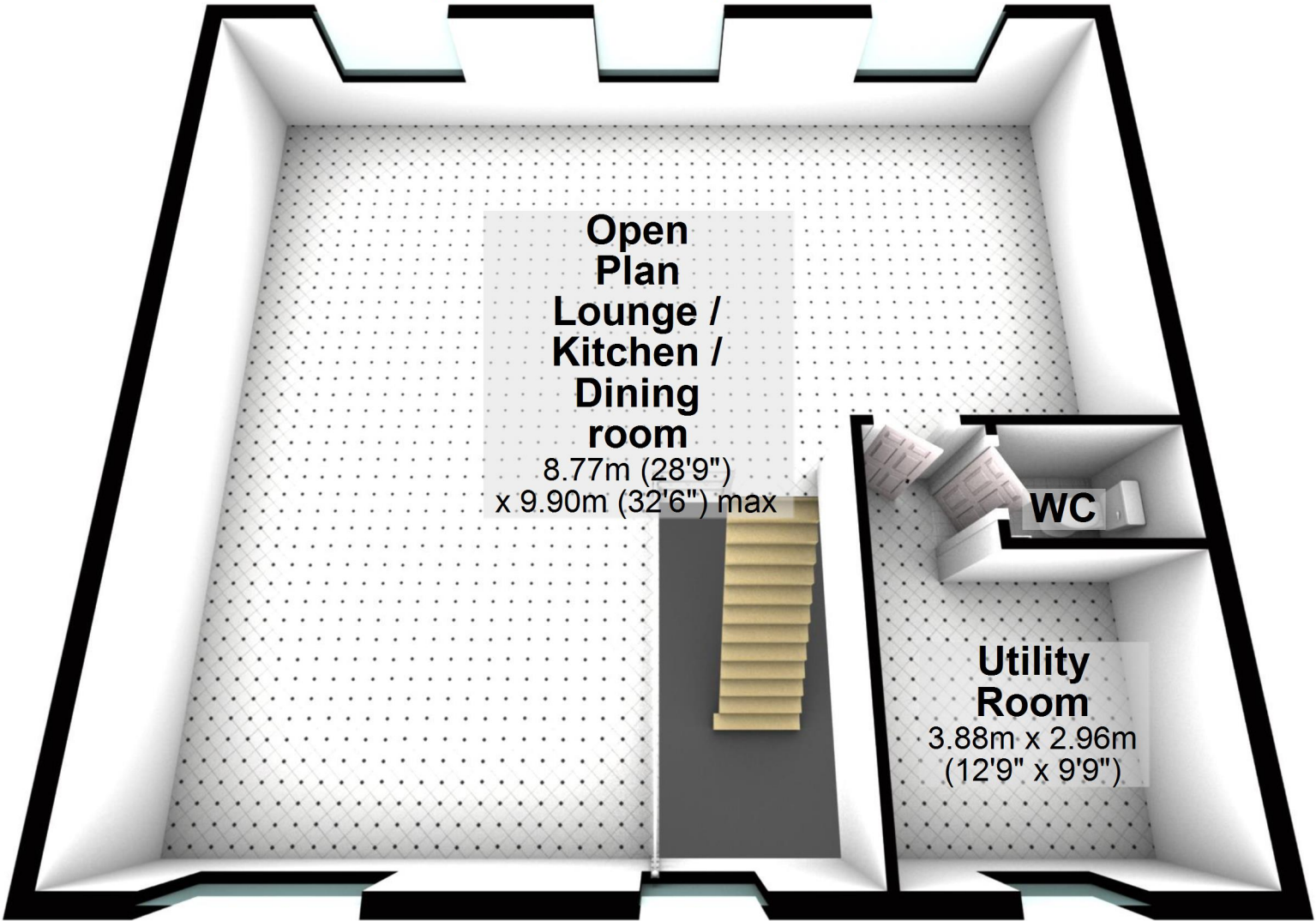


Total area: approx. 168.5 sq. metres (1813.2 sq. feet)

For illustrative purposes only. Not to scale. All sizes are approximate.
Plan produced using PlanUp.

First Floor

Approx. 84.2 sq. metres (906.6 sq. feet)



**Open
Plan
Lounge /
Kitchen /
Dining
room**

8.77m (28'9")
x 9.90m (32'6") max

WC

**Utility
Room**

3.88m x 2.96m
(12'9" x 9'9")