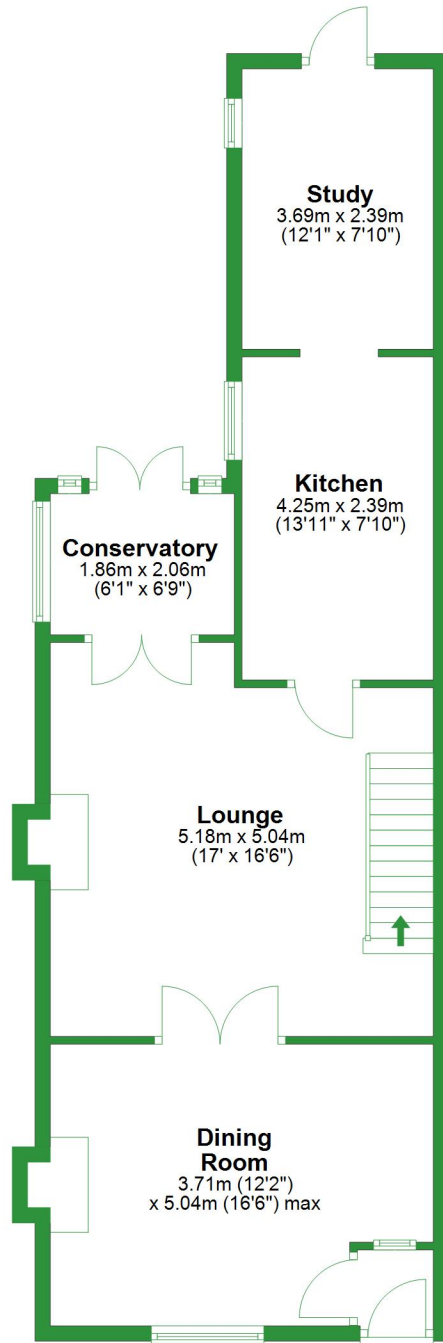


## Ground Floor

Approx. 69.2 sq. metres (744.7 sq. feet)

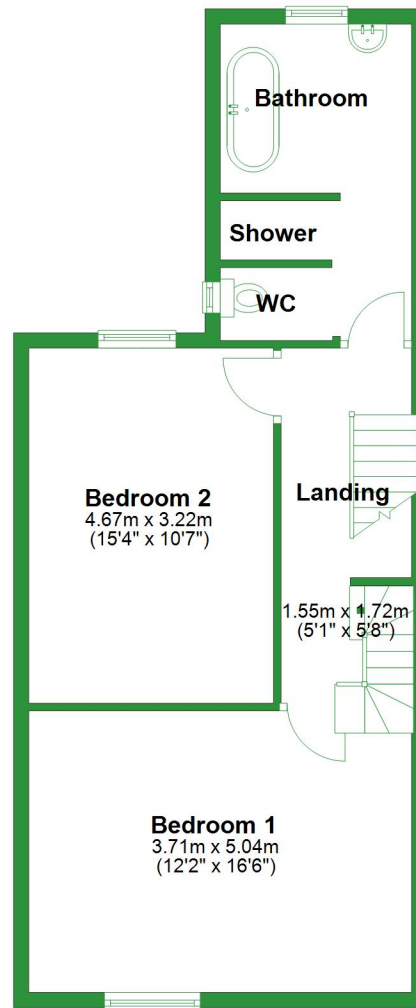


Total area: approx. 144.2 sq. metres (1551.6 sq. feet)

For illustrative purposes only. Not to scale. All sizes are approximate.  
Plan produced using PlanUp.

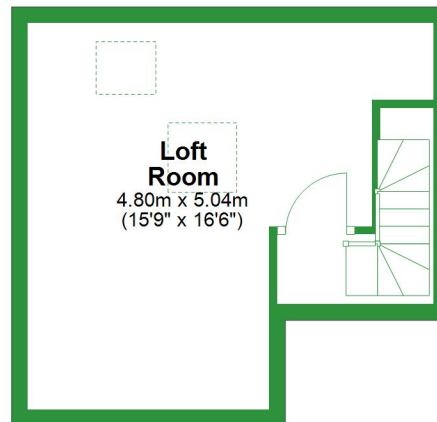
## First Floor

Approx. 53.4 sq. metres (575.2 sq. feet)



## Second Floor

Approx. 21.5 sq. metres (231.7 sq. feet)



# Ground Floor

Approx. 69.2 sq. metres (744.7 sq. feet)

## Study

3.69m x 2.39m  
(12'1" x 7'10")

## Kitchen

4.25m x 2.39m  
(13'11" x 7'10")

## Conservatory

1.86m x 2.06m  
(6'1" x 6'9")

## Lounge

5.18m x 5.04m  
(17' x 16'6")

## Dining Room

3.71m (12'2")  
x 5.04m (16'6") max

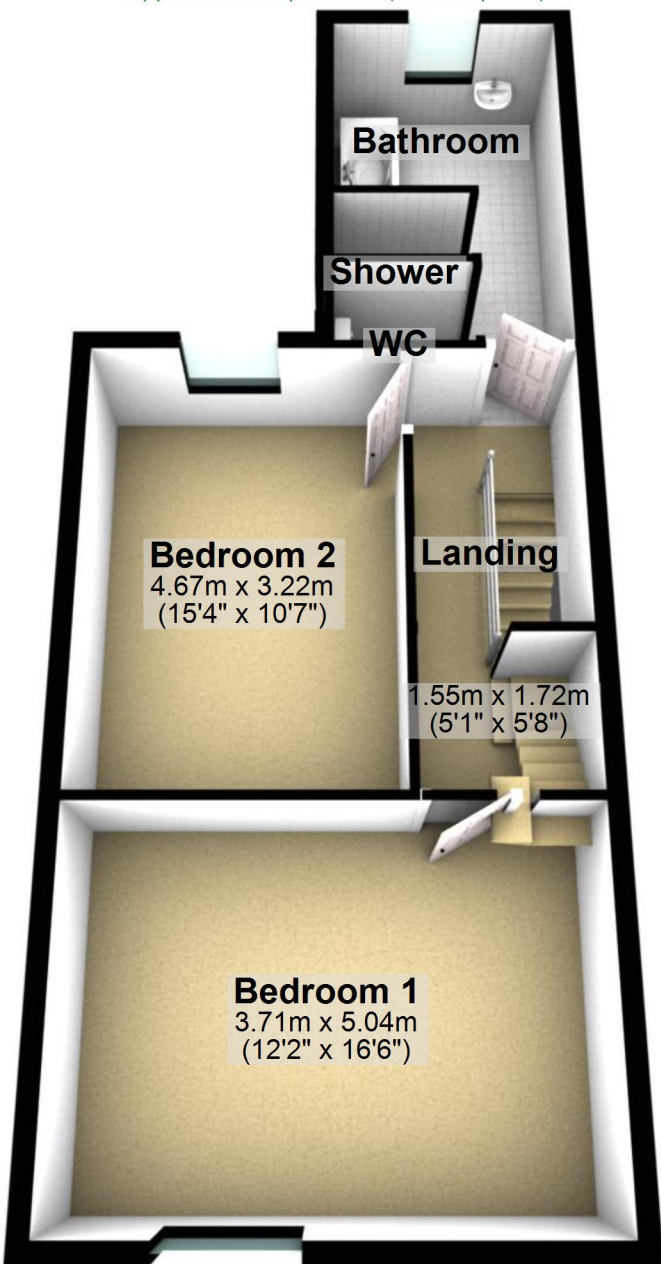
Total area: approx. 144.2 sq. metres (1551.6 sq. feet)

For illustrative purposes only. Not to scale. All sizes are approximate.

Plan produced using PlanUp.

## First Floor

Approx. 53.4 sq. metres (575.2 sq. feet)



## Second Floor

Approx. 21.5 sq. metres (231.7 sq. feet)

