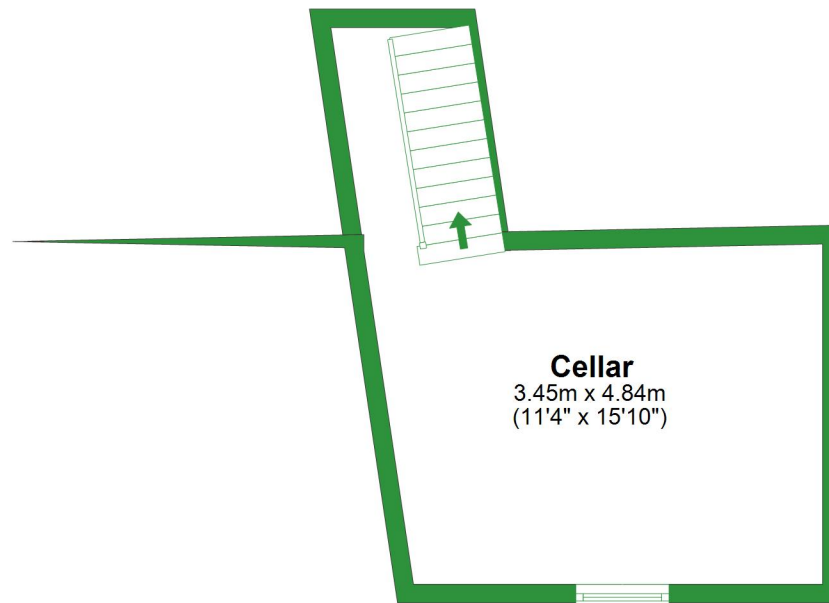


Basement

Approx. 20.1 sq. metres (216.0 sq. feet)

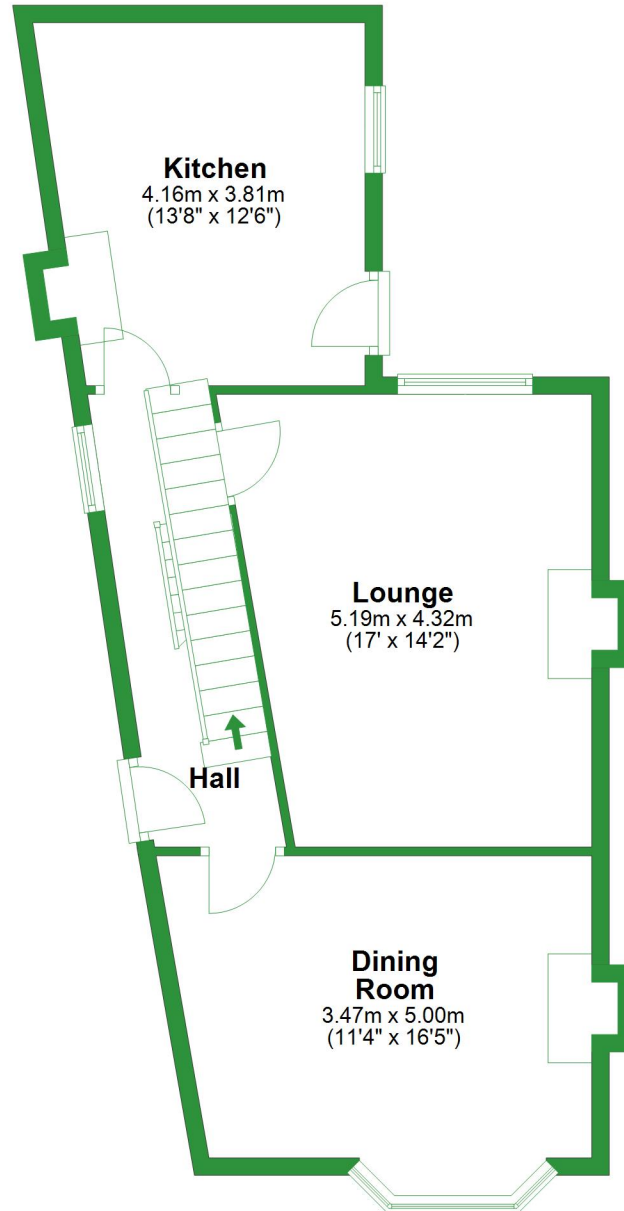


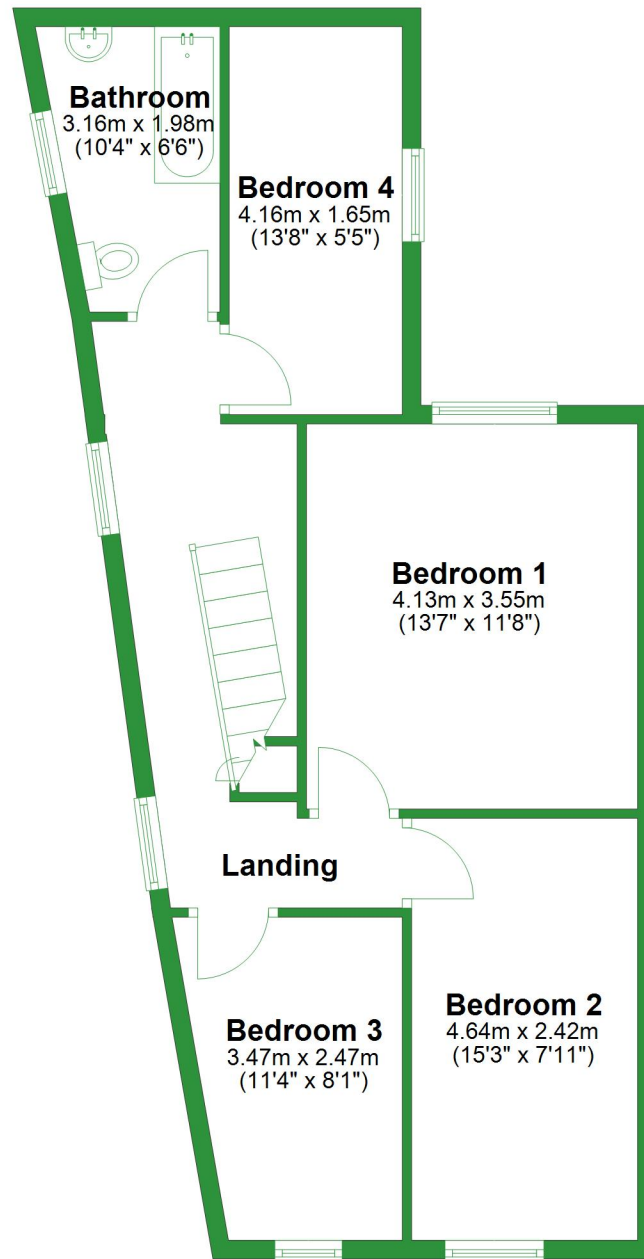
Total area: approx. 139.7 sq. metres (1503.5 sq. feet)

For illustrative purposes only. Not to scale. All sizes are approximate.
Plan produced using PlanUp.

Ground Floor

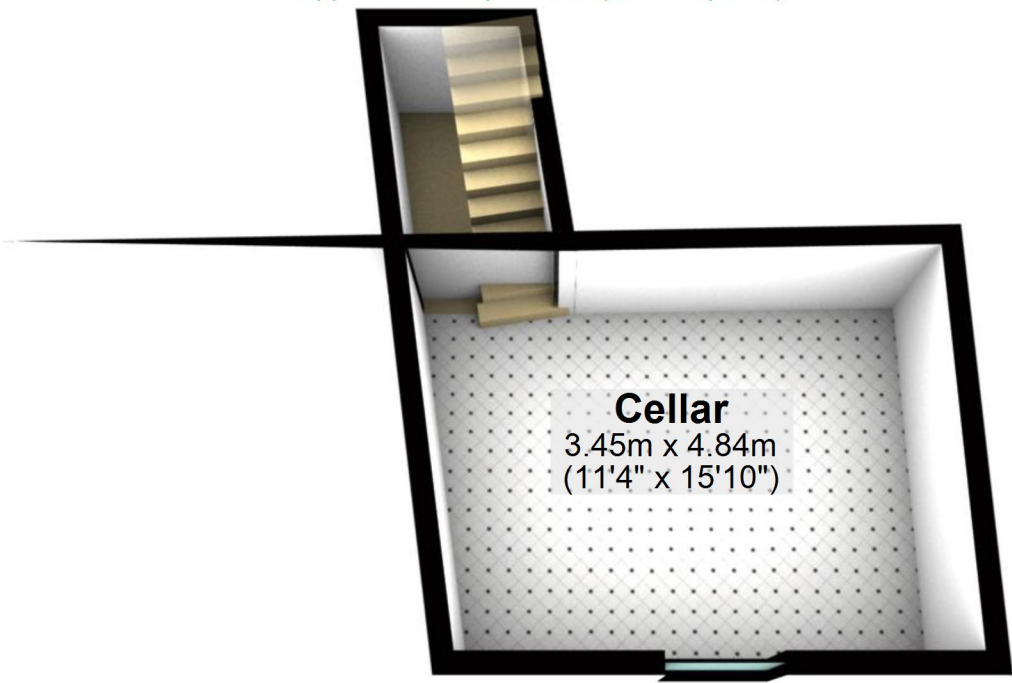
Approx. 60.0 sq. metres (645.4 sq. feet)





Basement

Approx. 20.1 sq. metres (216.0 sq. feet)



Cellar

3.45m x 4.84m
(11'4" x 15'10")

Total area: approx. 139.7 sq. metres (1503.5 sq. feet)

For illustrative purposes only. Not to scale. All sizes are approximate.

Plan produced using PlanUp.

Ground Floor

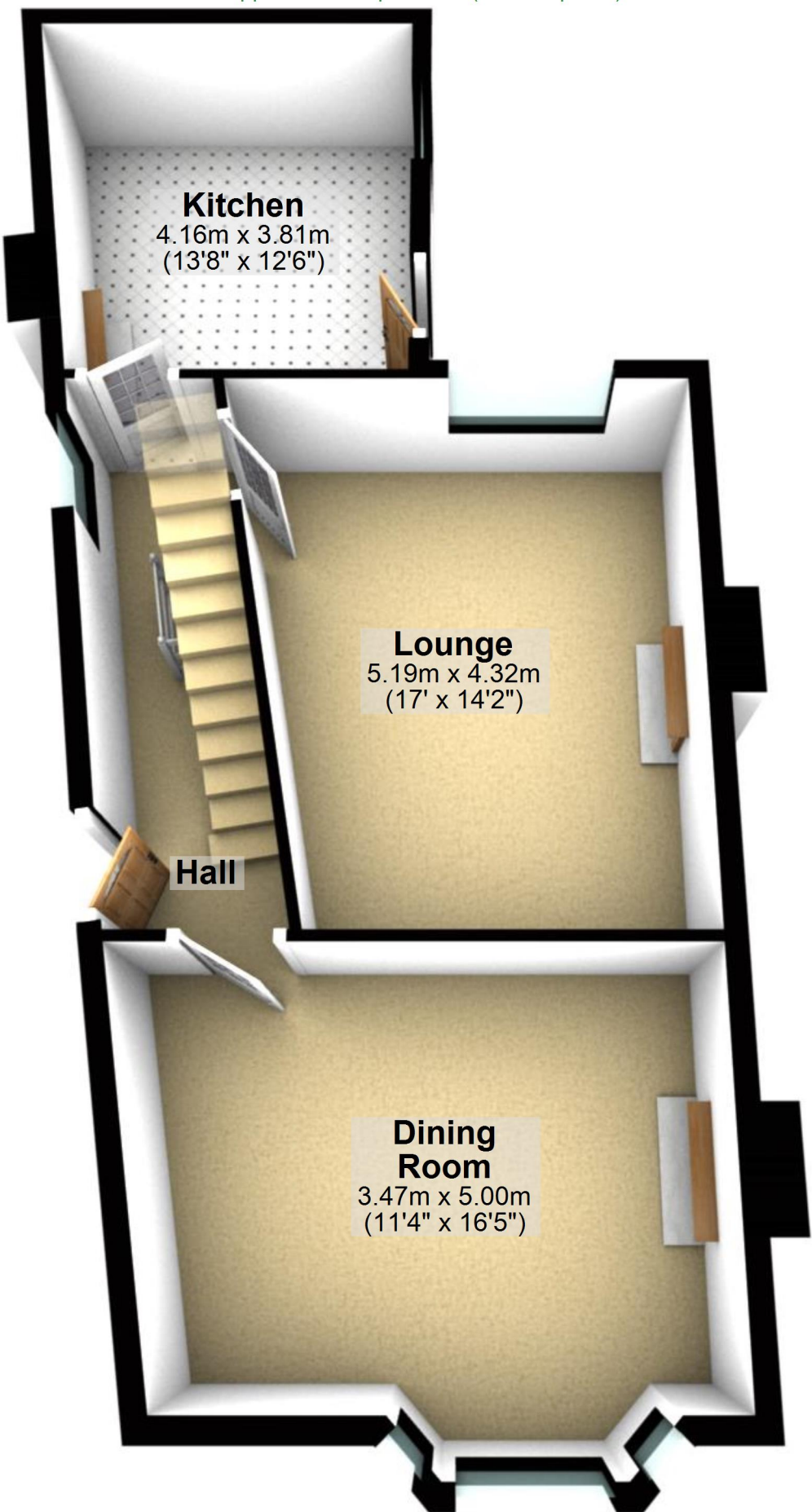
Approx. 60.0 sq. metres (645.4 sq. feet)

Kitchen
4.16m x 3.81m
(13'8" x 12'6")

Lounge
5.19m x 4.32m
(17' x 14'2")

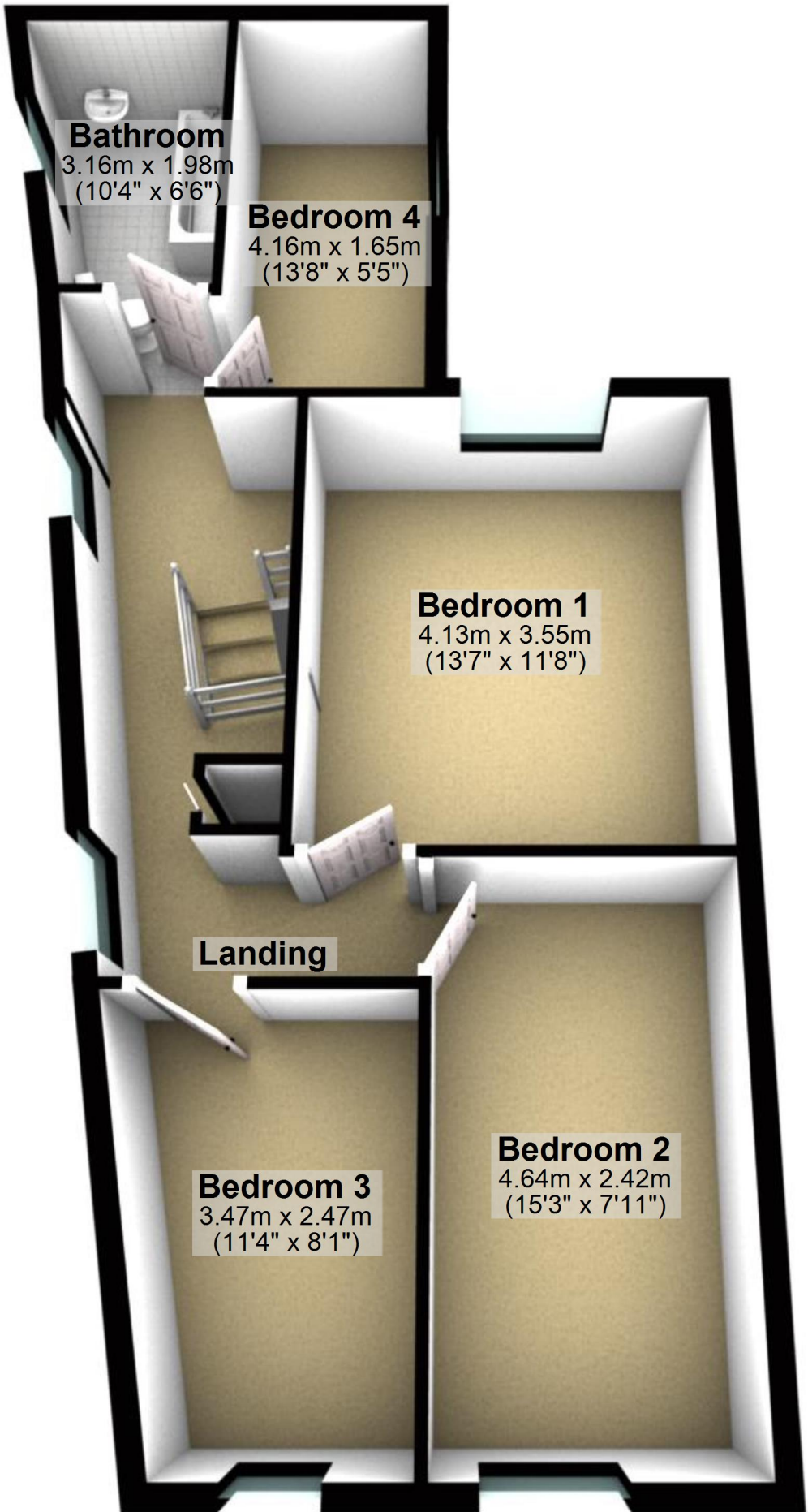
Hall

Dining Room
3.47m x 5.00m
(11'4" x 16'5")



First Floor

Approx. 59.7 sq. metres (642.1 sq. feet)



Bathroom

3.16m x 1.98m
(10'4" x 6'6")

Bedroom 4

4.16m x 1.65m
(13'8" x 5'5")

Bedroom 1

4.13m x 3.55m
(13'7" x 11'8")

Landing

Bedroom 3

3.47m x 2.47m
(11'4" x 8'1")

Bedroom 2

4.64m x 2.42m
(15'3" x 7'11")