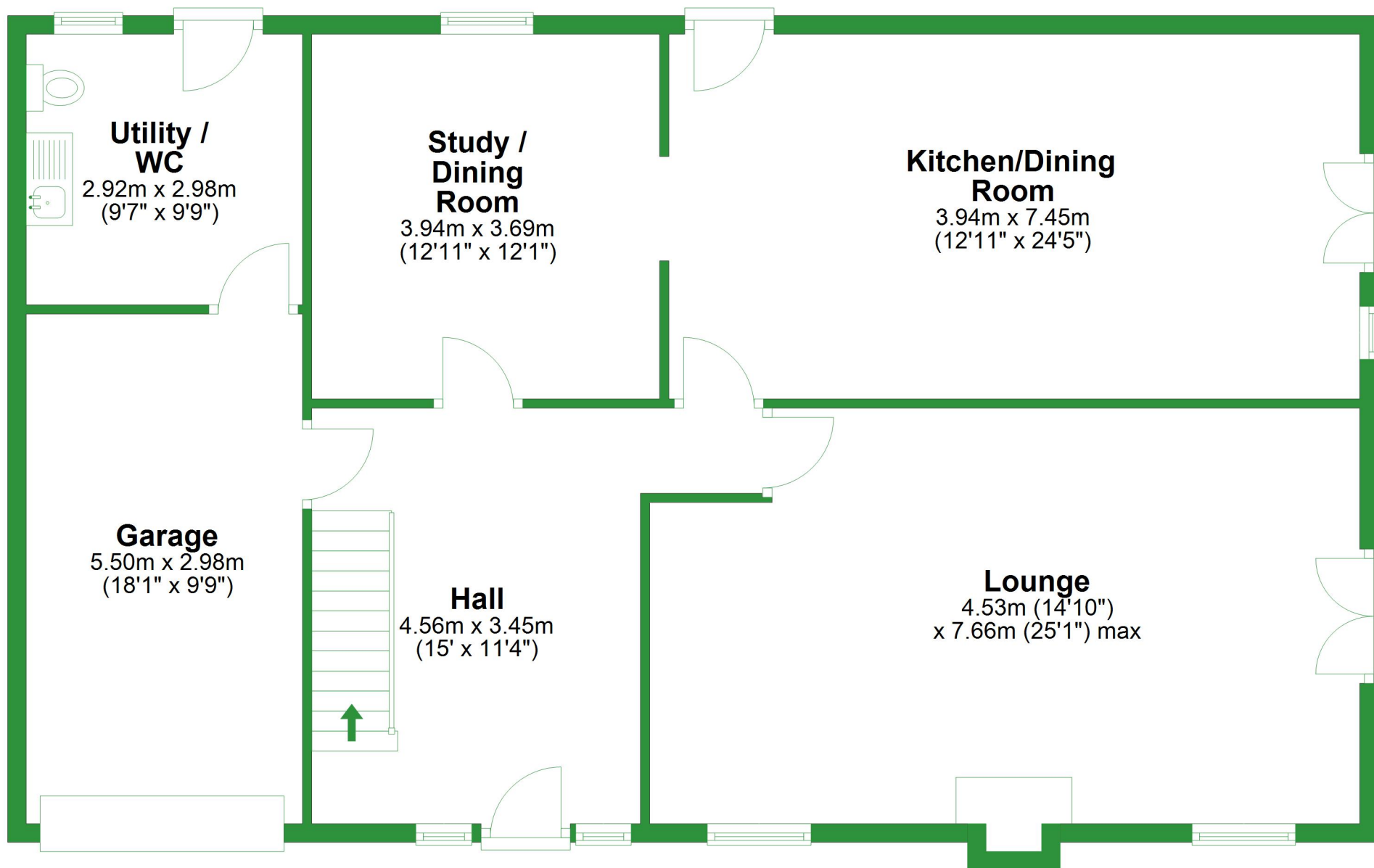


# Ground Floor

Approx. 122.3 sq. metres (1316.4 sq. feet)



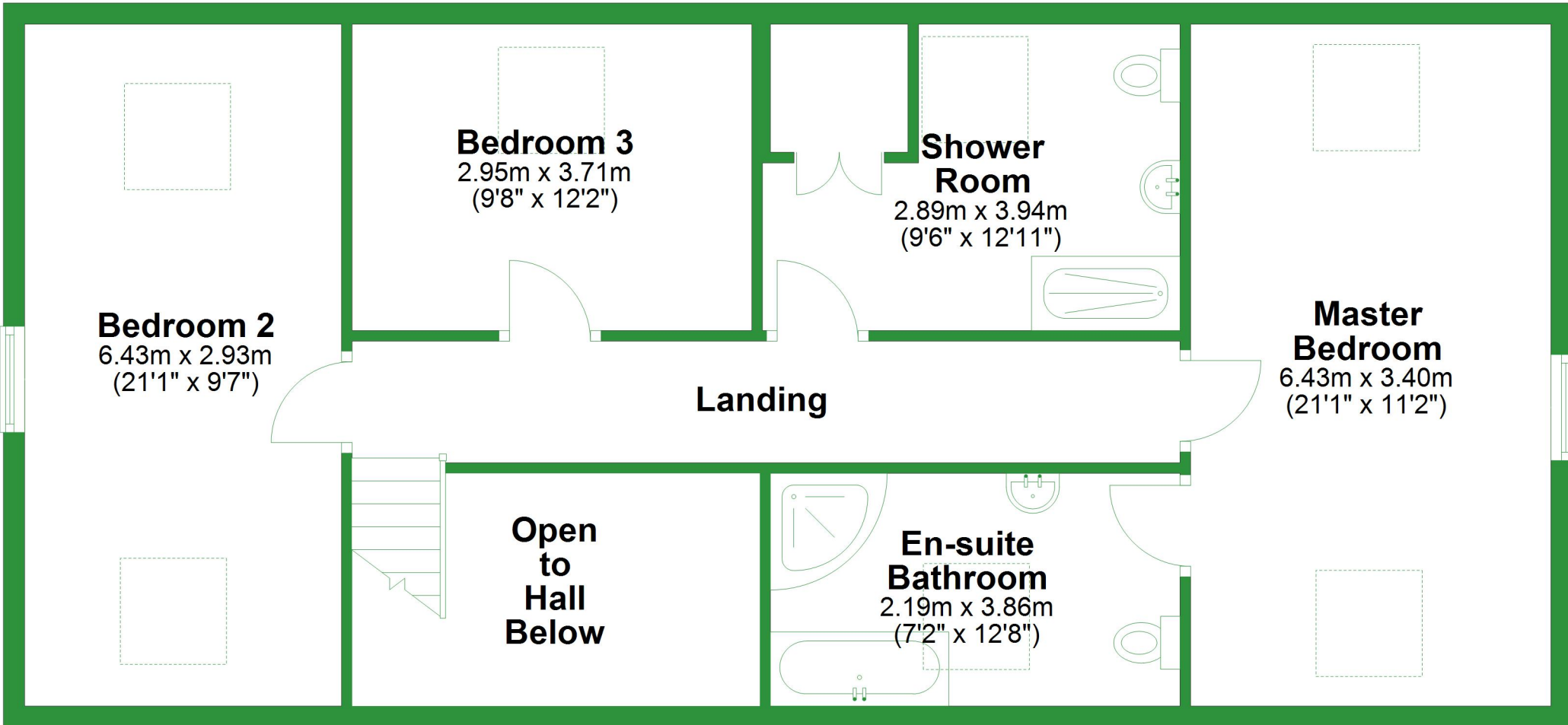
Total area: approx. 214.7 sq. metres (2310.8 sq. feet)

For illustrative purposes only. Not to scale. All sizes are approximate.

Plan produced using PlanUp.

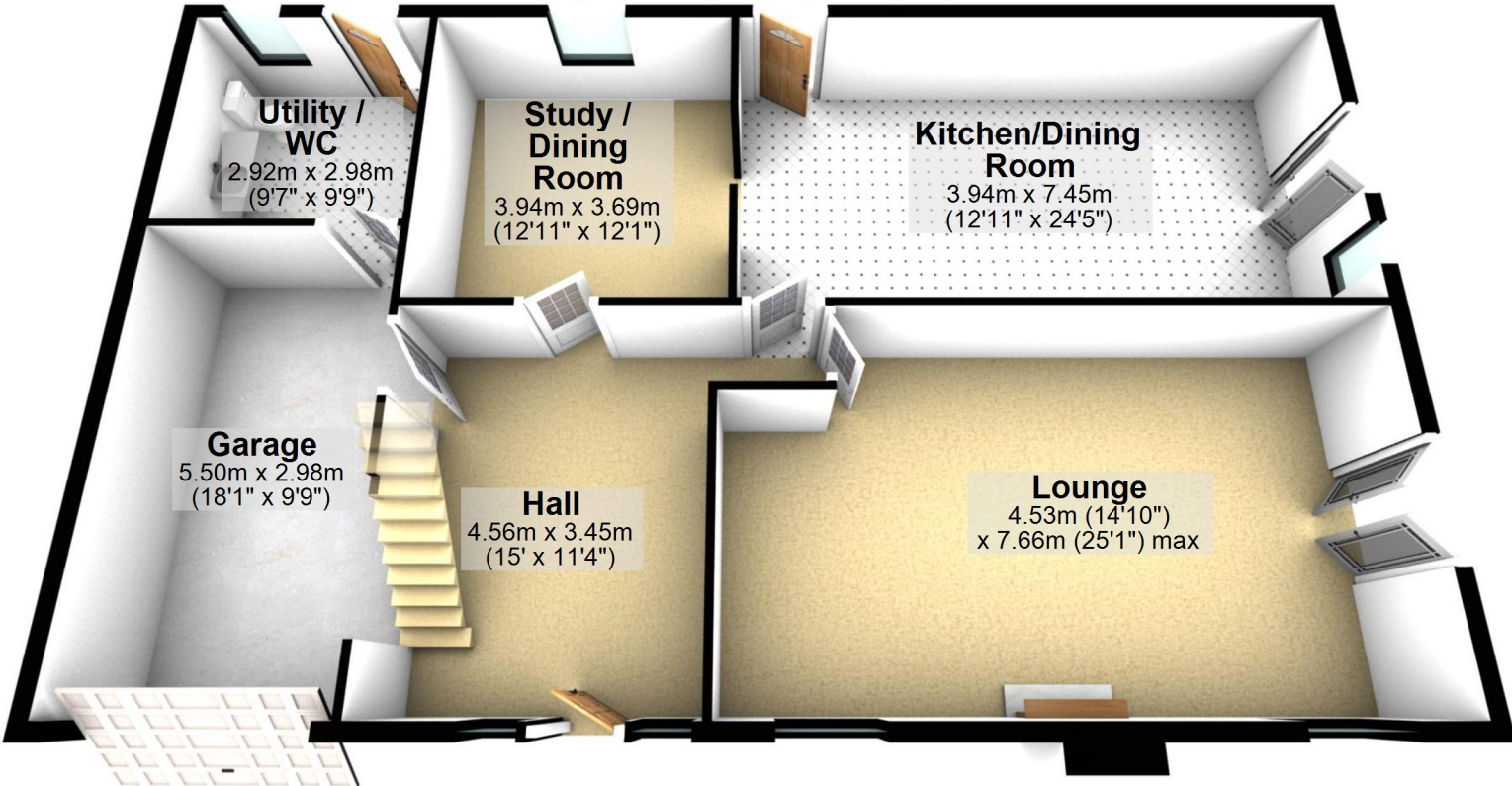
# First Floor

Approx. 92.4 sq. metres (994.4 sq. feet)



## Ground Floor

Approx. 122.3 sq. metres (1316.4 sq. feet)



**Utility /  
WC**

2.92m x 2.98m  
(9'7" x 9'9")

**Study /  
Dining  
Room**

3.94m x 3.69m  
(12'11" x 12'1")

**Kitchen/Dining  
Room**

3.94m x 7.45m  
(12'11" x 24'5")

**Garage**

5.50m x 2.98m  
(18'1" x 9'9")

**Hall**

4.56m x 3.45m  
(15' x 11'4")

**Lounge**

4.53m (14'10")  
x 7.66m (25'1") max

Total area: approx. 214.7 sq. metres (2310.8 sq. feet)

For illustrative purposes only. Not to scale. All sizes are approximate.

Plan produced using PlanUp.

## First Floor

Approx. 92.4 sq. metres (994.4 sq. feet)

