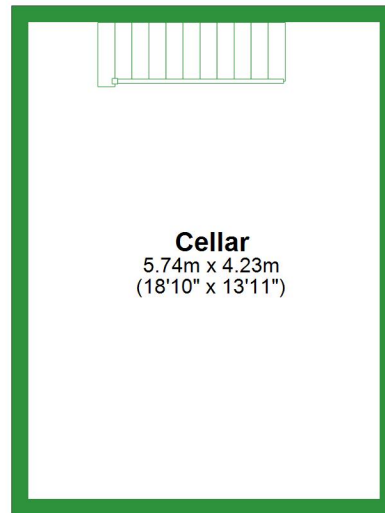


## Basement

Approx. 24.3 sq. metres (261.5 sq. feet)



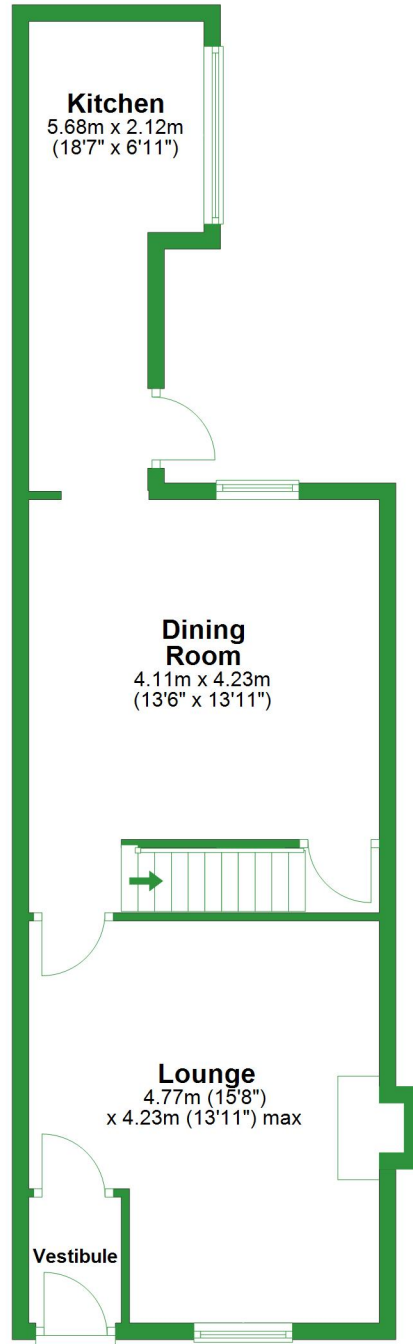
**Cellar**  
5.74m x 4.23m  
(18'10" x 13'11")

Total area: approx. 148.8 sq. metres (1601.5 sq. feet)

For illustrative purposes only. Not to scale. All sizes are approximate.  
Plan produced using PlanUp.

# Ground Floor

Approx. 51.7 sq. metres (556.4 sq. feet)



**Kitchen**  
5.68m x 2.12m  
(18'7" x 6'11")

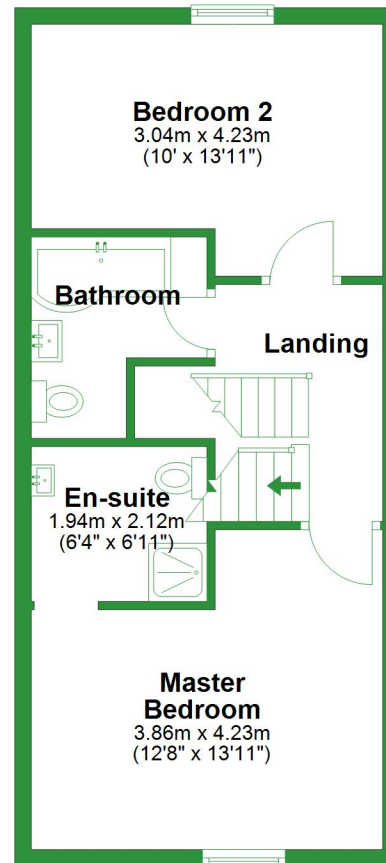
**Dining Room**  
4.11m x 4.23m  
(13'6" x 13'11")

**Lounge**  
4.77m (15'8")  
x 4.23m (13'11") max

**Vestibule**

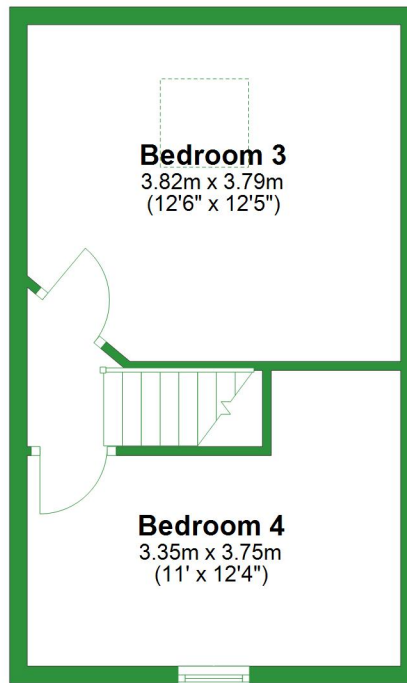
## First Floor

Approx. 42.0 sq. metres (452.3 sq. feet)



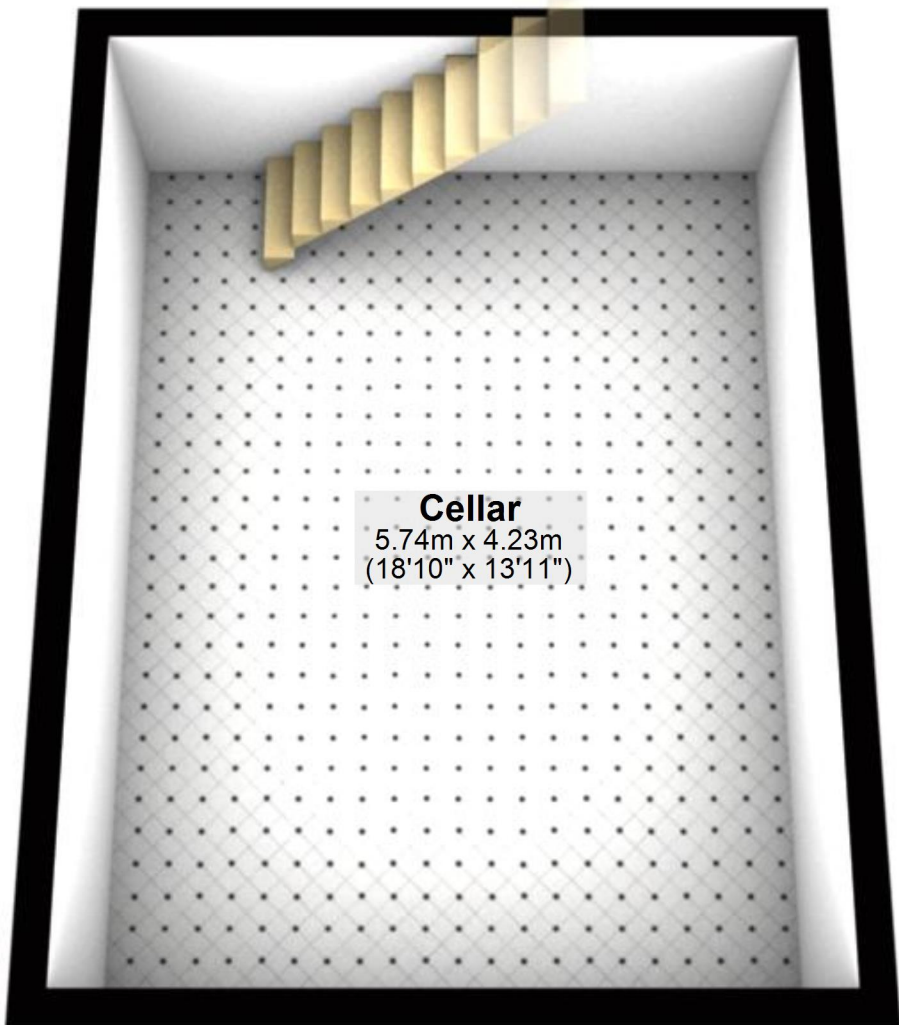
## Second Floor

Approx. 30.8 sq. metres (331.3 sq. feet)



## Basement

Approx. 24.3 sq. metres (261.5 sq. feet)



### Cellar

5.74m x 4.23m  
(18'10" x 13'11")

Total area: approx. 148.8 sq. metres (1601.5 sq. feet)

For illustrative purposes only. Not to scale. All sizes are approximate.

Plan produced using PlanUp.

## Ground Floor

Approx. 51.7 sq. metres (556.4 sq. feet)

### Kitchen

5.68m x 2.12m  
(18'7" x 6'11")

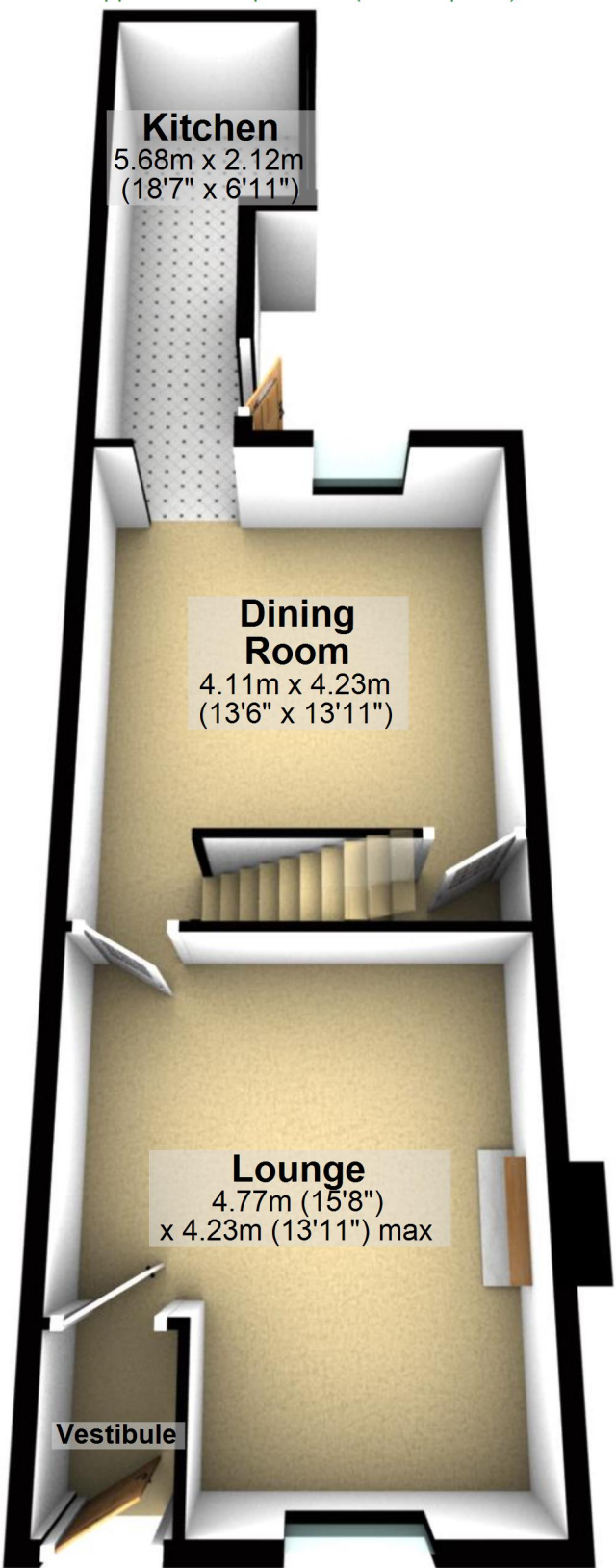
### Dining Room

4.11m x 4.23m  
(13'6" x 13'11")

### Lounge

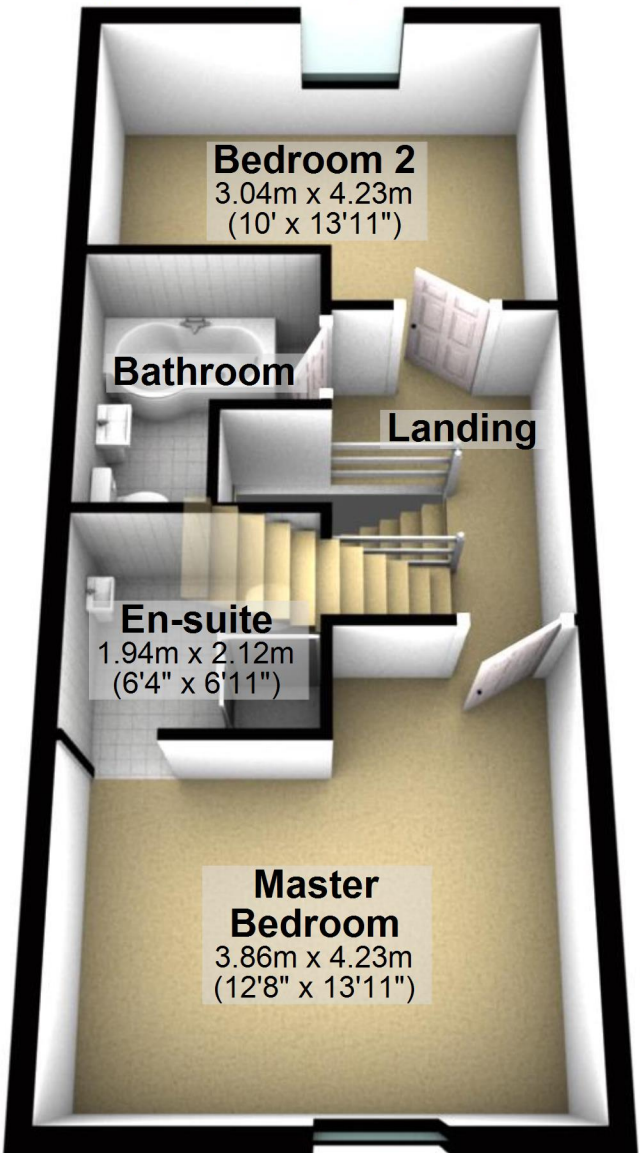
4.77m (15'8")  
x 4.23m (13'11") max

Vestibule



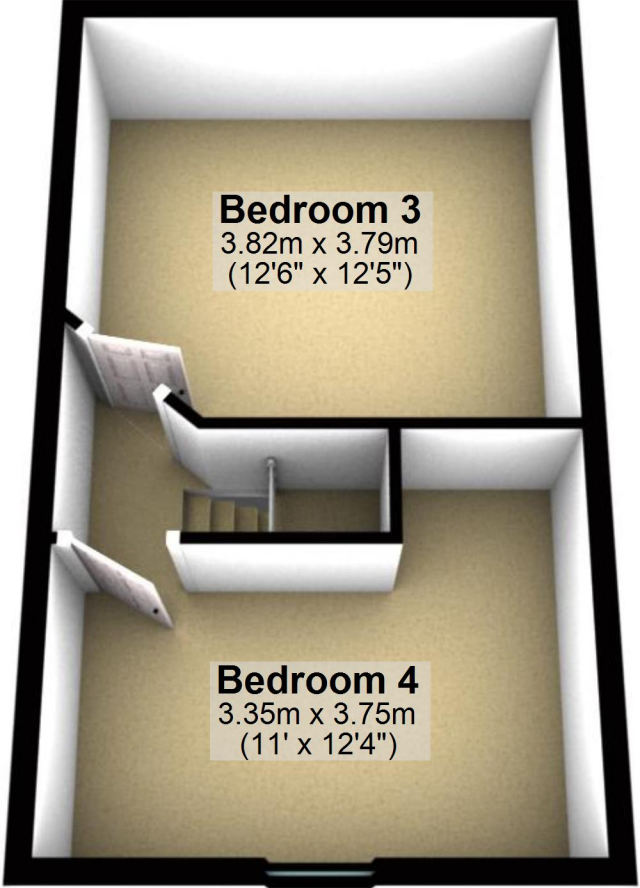
## First Floor

Approx. 42.0 sq. metres (452.3 sq. feet)



## Second Floor

Approx. 30.8 sq. metres (331.3 sq. feet)



**Bedroom 3**  
3.82m x 3.79m  
(12'6" x 12'5")

This 3D architectural rendering shows the second floor of a building. The floor is a light beige color. The walls are white. The ceiling is white. The floor is divided into three main areas: a large bedroom at the top, a bathroom in the middle, and another bedroom at the bottom. The bedroom at the top is labeled 'Bedroom 3' and has dimensions of 3.82m x 3.79m (12'6" x 12'5"). The bathroom in the middle is white and contains a toilet, a sink, and a shower. The bedroom at the bottom is labeled 'Bedroom 4' and has dimensions of 3.35m x 3.75m (11' x 12'4"). There are two doors on the left wall, one leading to the top bedroom and one leading to the bottom bedroom. There is also a door at the bottom center of the floor plan.

**Bedroom 4**  
3.35m x 3.75m  
(11' x 12'4")