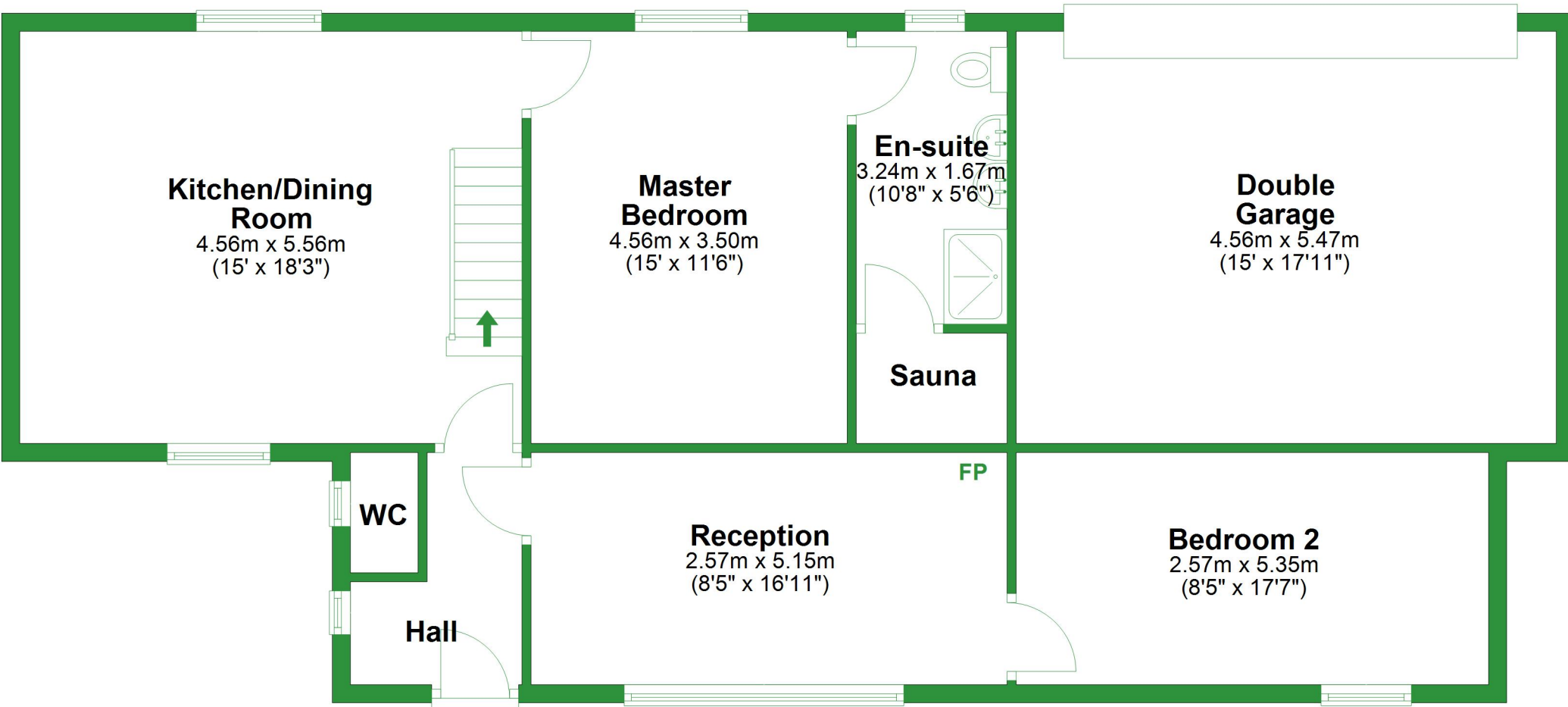


## Ground Floor

Approx. 108.9 sq. metres (1172.0 sq. feet)



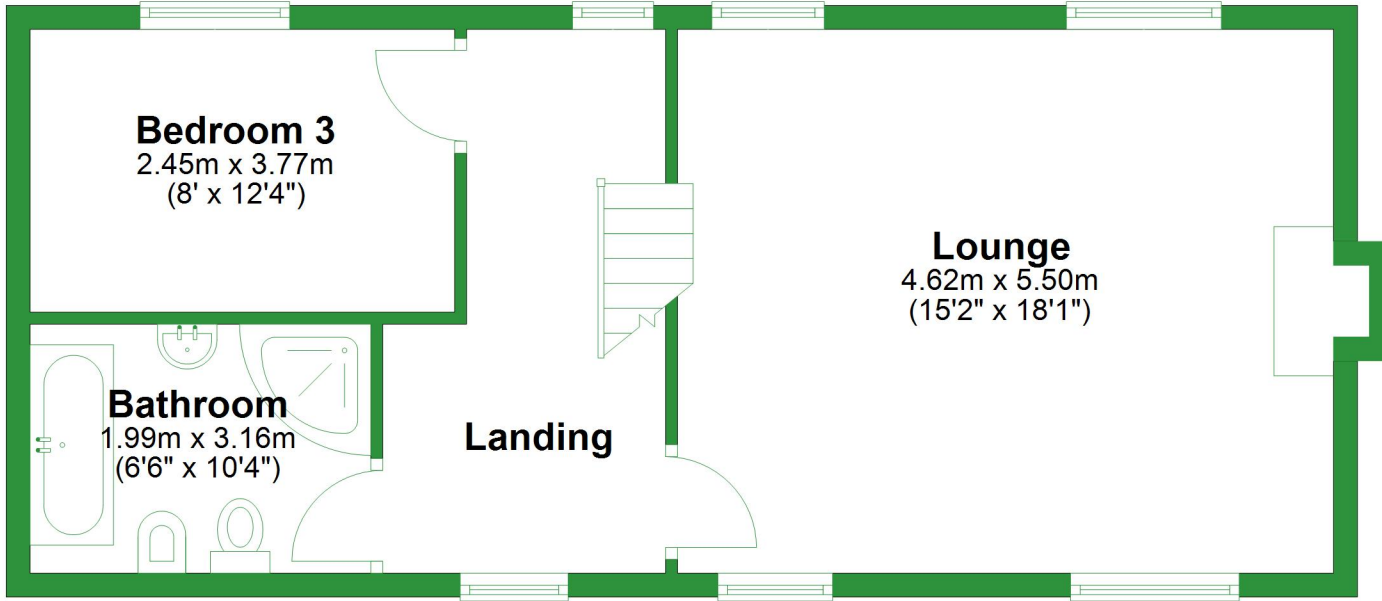
Total area: approx. 158.7 sq. metres (1708.5 sq. feet)

For illustrative purposes only. Not to scale. All sizes are approximate.

Plan produced using PlanUp.

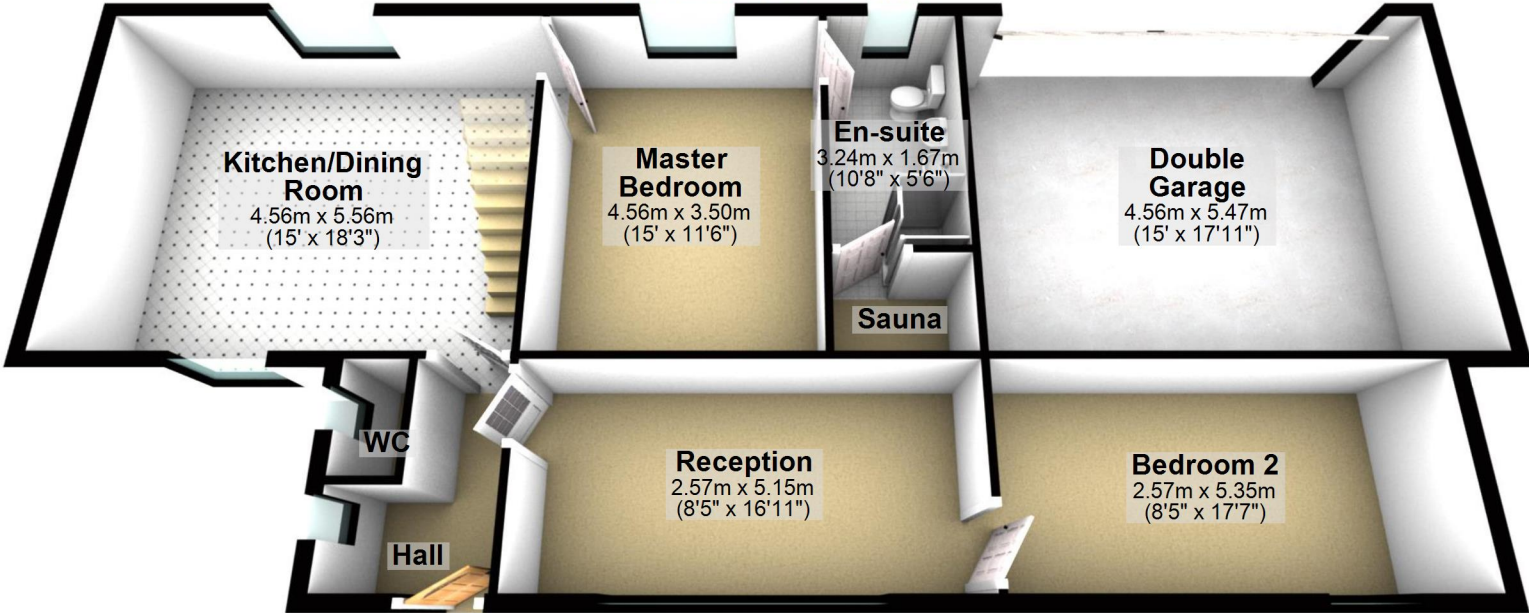
# First Floor

Approx. 49.8 sq. metres (536.5 sq. feet)



## Ground Floor

Approx. 108.9 sq. metres (1172.0 sq. feet)



Total area: approx. 158.7 sq. metres (1708.5 sq. feet)

For illustrative purposes only. Not to scale. All sizes are approximate.  
Plan produced using PlanUp.

## First Floor

Approx. 49.8 sq. metres (536.5 sq. feet)

### Bedroom 3

2.45m x 3.77m  
(8' x 12'4")

### Bathroom

1.99m x 3.16m  
(6'6" x 10'4")

### Landing

### Lounge

4.62m x 5.50m  
(15'2" x 18'1")

