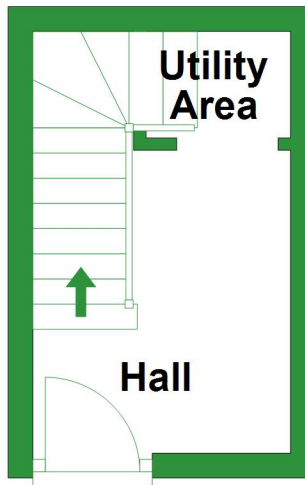


## Ground Floor

Approx. 7.1 sq. metres (76.0 sq. feet)

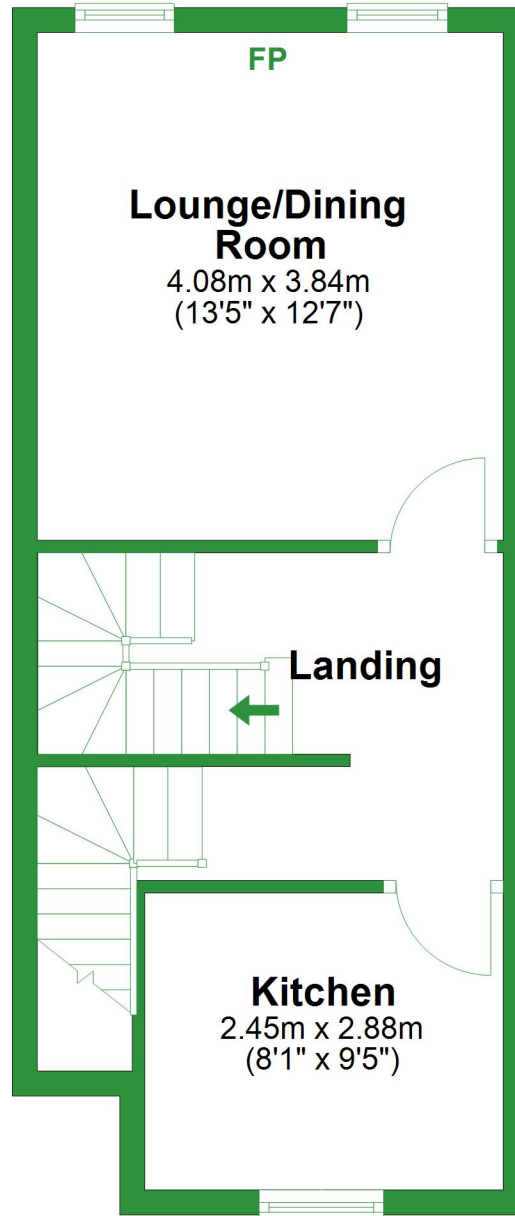


Total area: approx. 75.9 sq. metres (816.7 sq. feet)

For illustrative purposes only. Not to scale. All sizes are approximate.  
Plan produced using PlanUp.

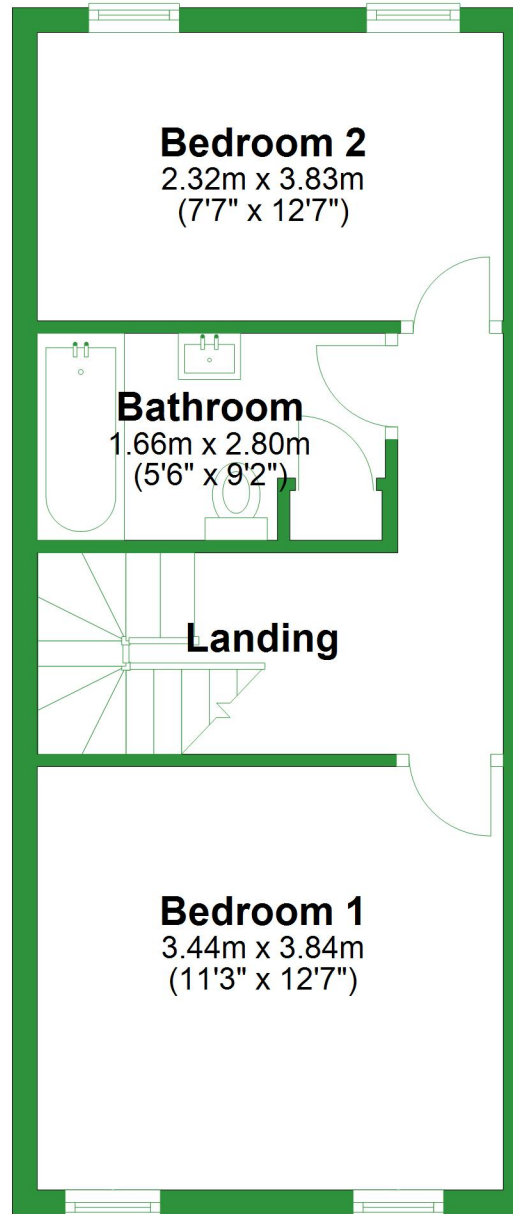
# First Floor

Approx. 34.0 sq. metres (365.9 sq. feet)



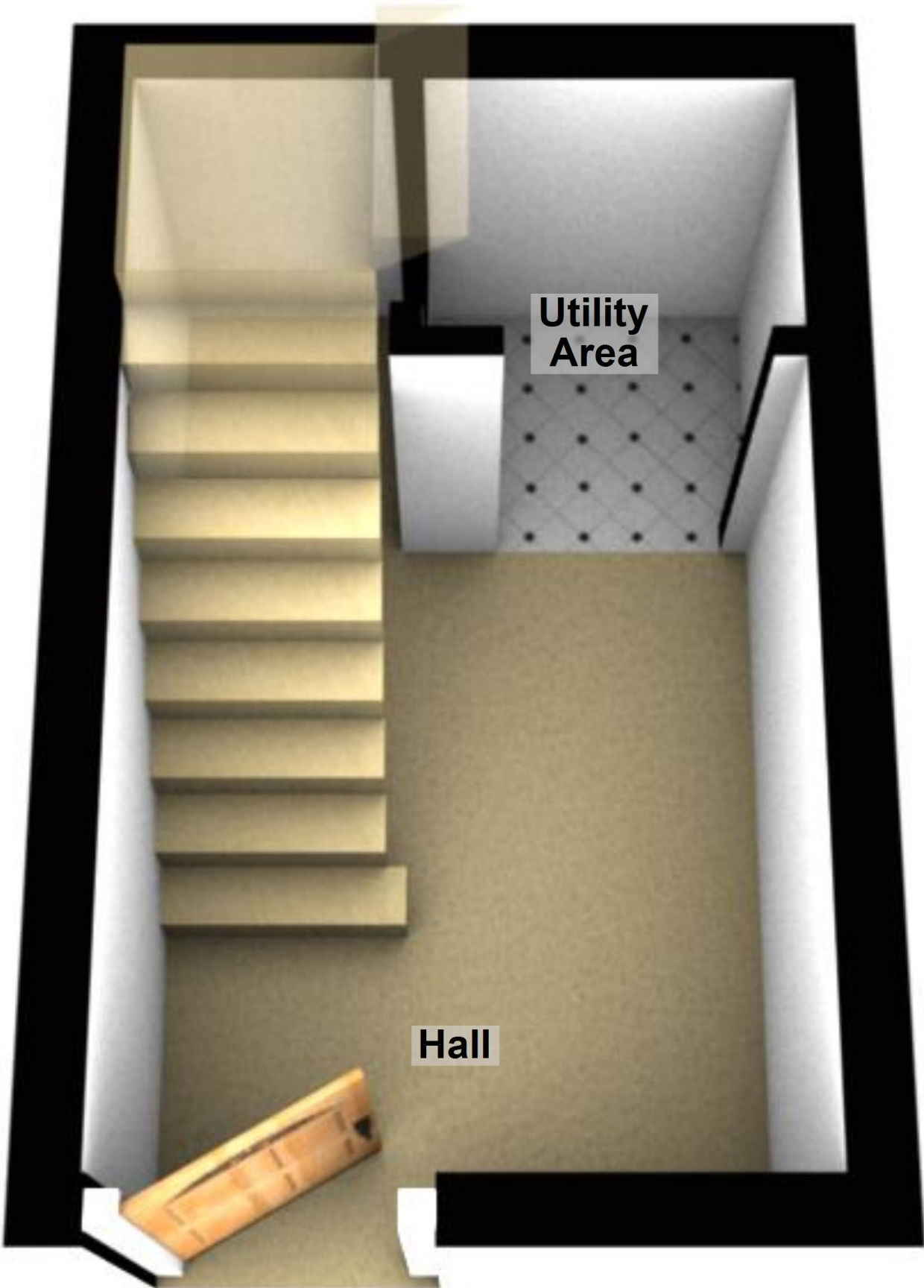
## Second Floor

Approx. 34.8 sq. metres (374.7 sq. feet)



# Ground Floor

Approx. 7.1 sq. metres (76.0 sq. feet)



Utility  
Area

Hall

Total area: approx. 75.9 sq. metres (816.7 sq. feet)

For illustrative purposes only. Not to scale. All sizes are approximate.

Plan produced using PlanUp.

# First Floor

Approx. 34.0 sq. metres (365.9 sq. feet)

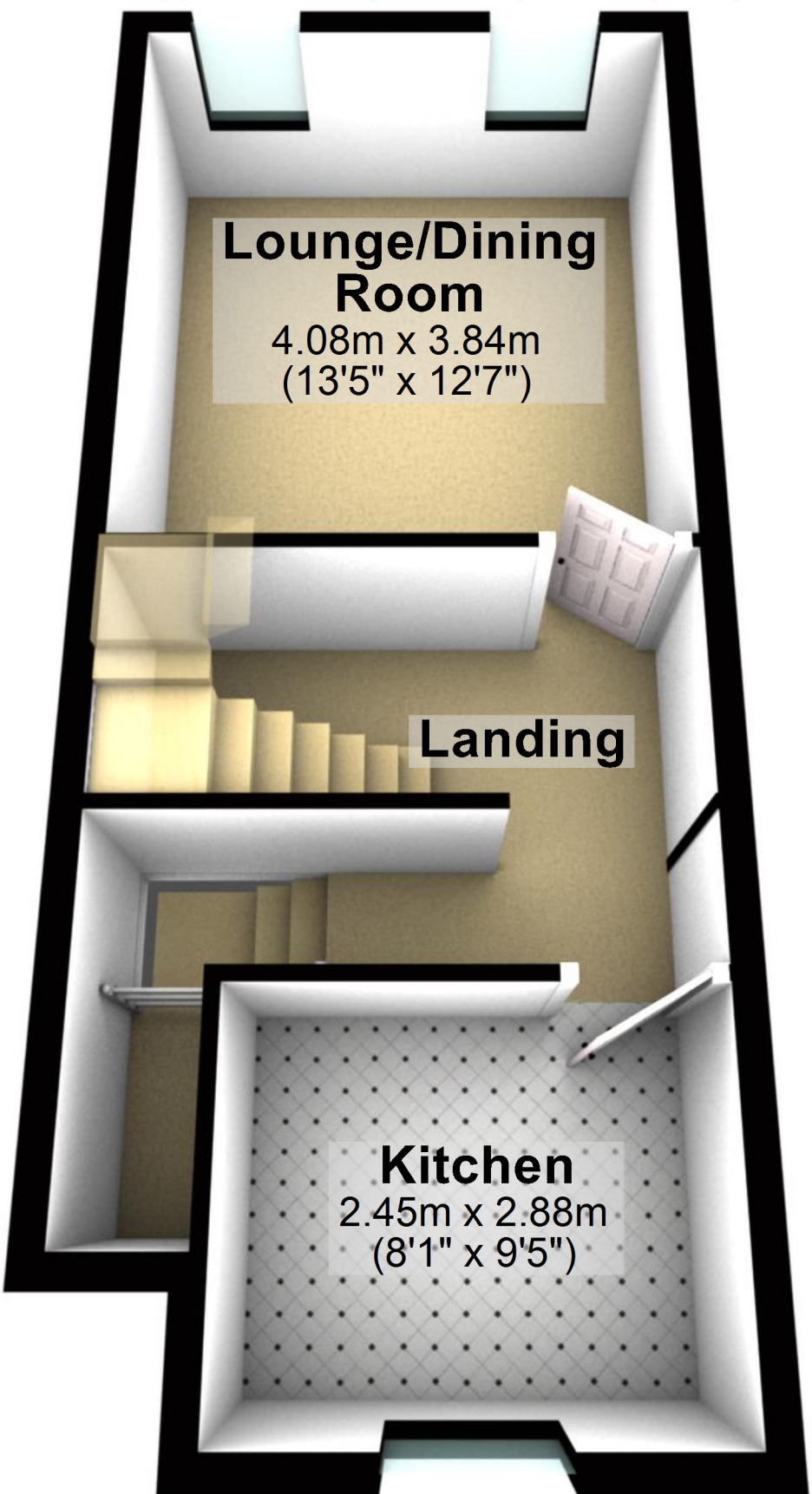
## Lounge/Dining Room

4.08m x 3.84m  
(13'5" x 12'7")

## Landing

## Kitchen

2.45m x 2.88m  
(8'1" x 9'5")



# Second Floor

Approx. 34.8 sq. metres (374.7 sq. feet)

## Bedroom 2

2.32m x 3.83m  
(7'7" x 12'7")

## Bathroom

1.66m x 2.80m  
(5'6" x 9'2")

## Landing

## Bedroom 1

3.44m x 3.84m  
(11'3" x 12'7")

