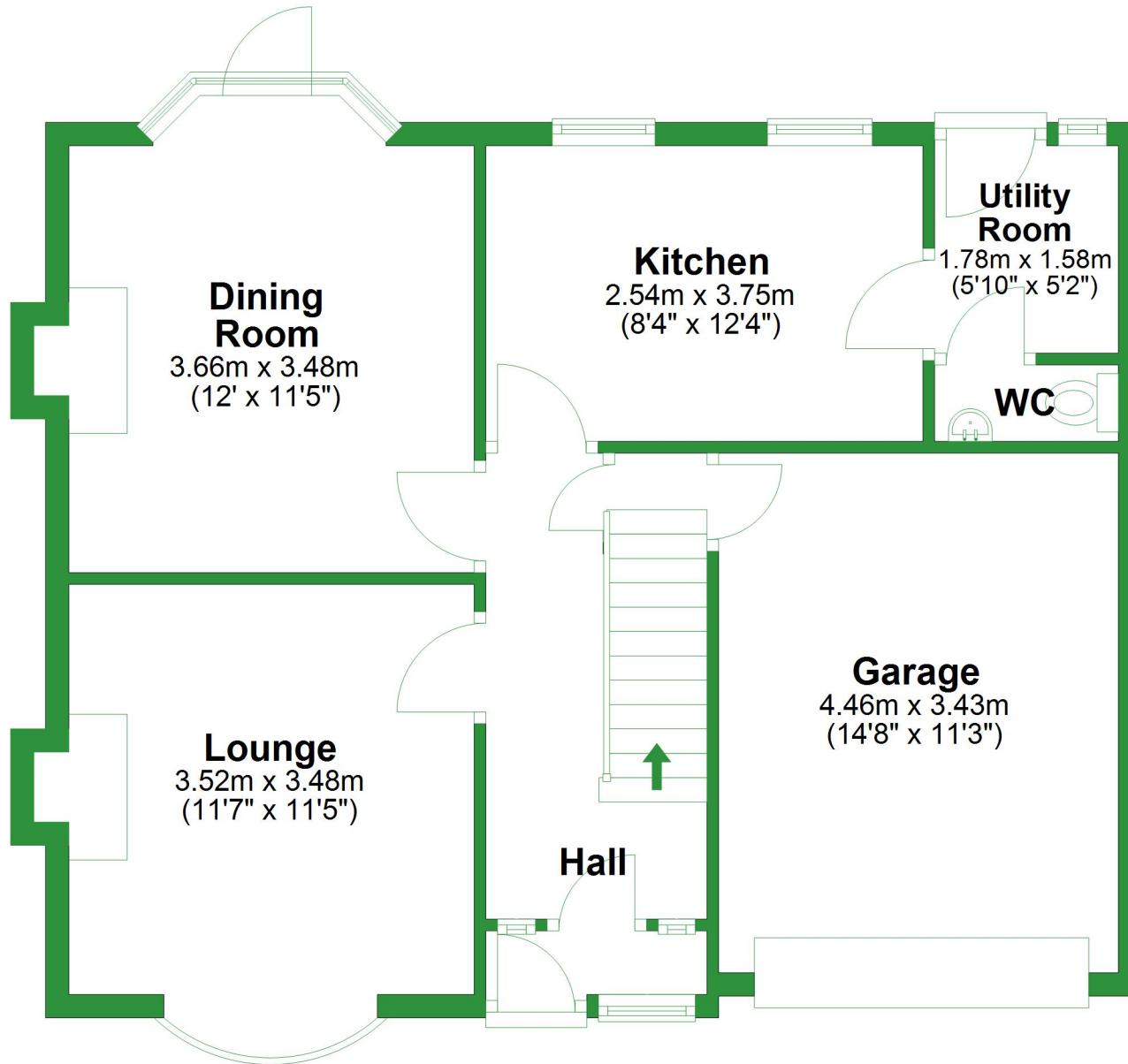


# Ground Floor

Approx. 65.5 sq. metres (704.5 sq. feet)



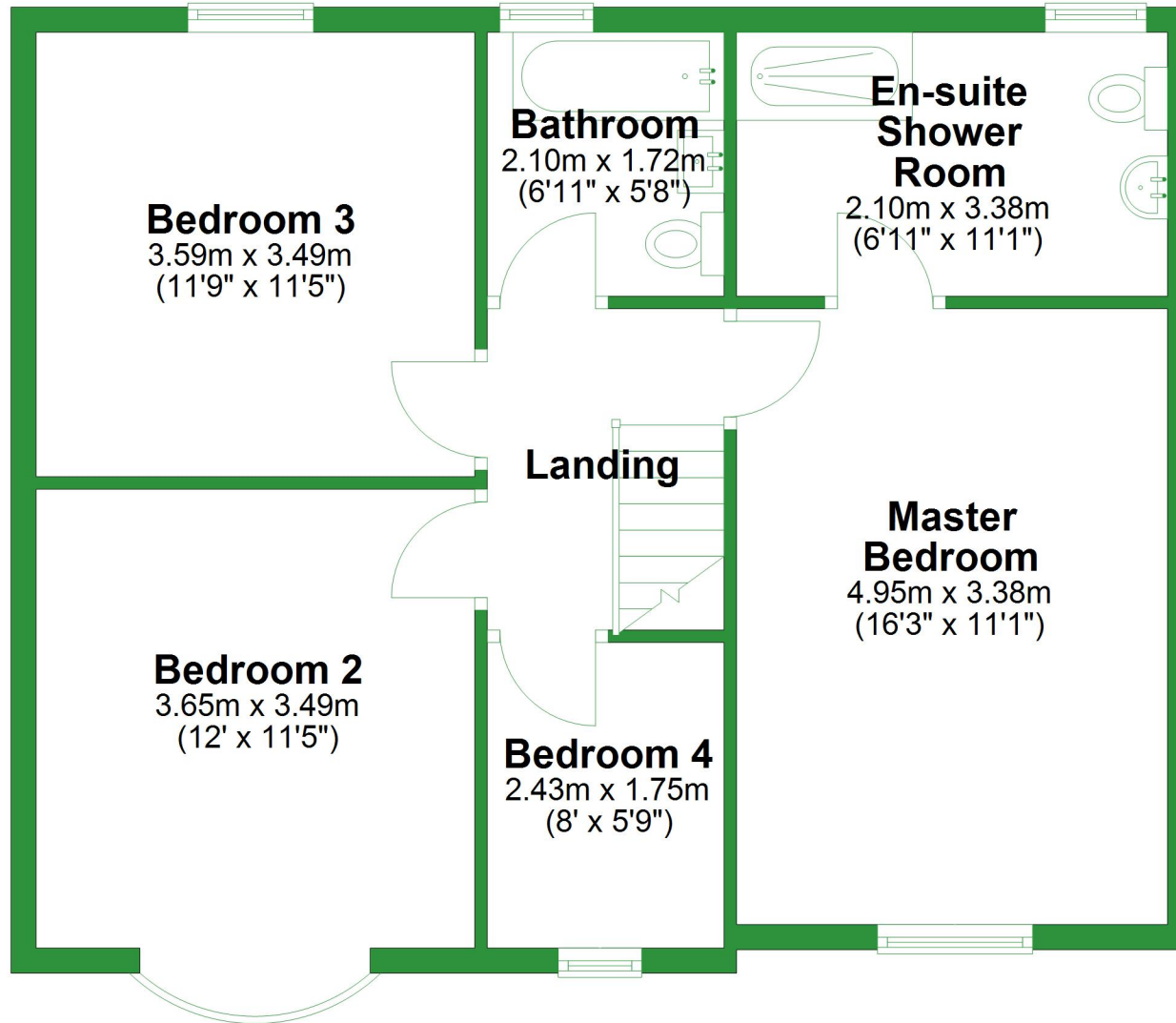
Total area: approx. 130.6 sq. metres (1406.3 sq. feet)

For illustrative purposes only. Not to scale. All sizes are approximate.

Plan produced using PlanUp.

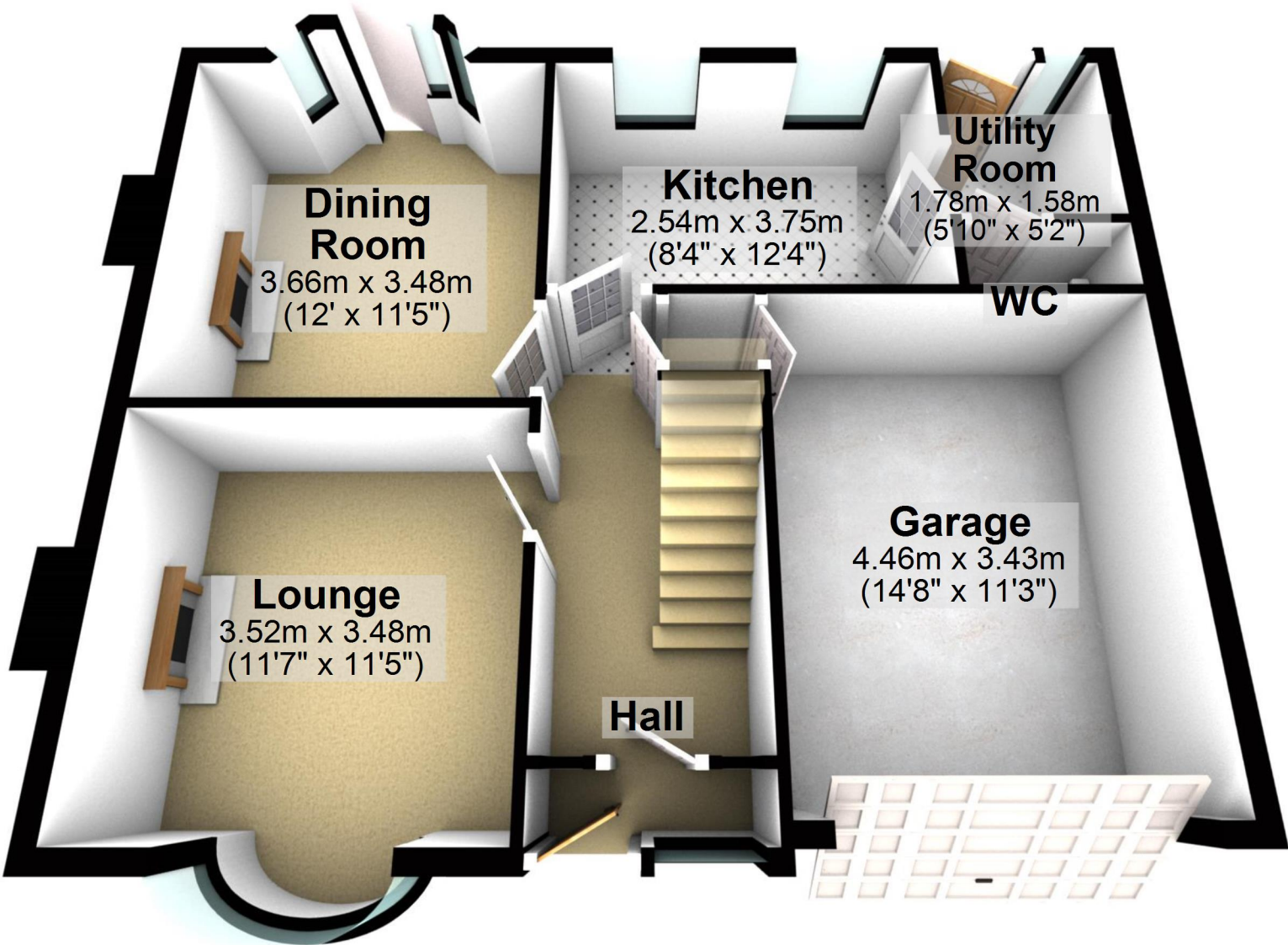
# First Floor

Approx. 65.2 sq. metres (701.7 sq. feet)



## Ground Floor

Approx. 65.5 sq. metres (704.5 sq. feet)



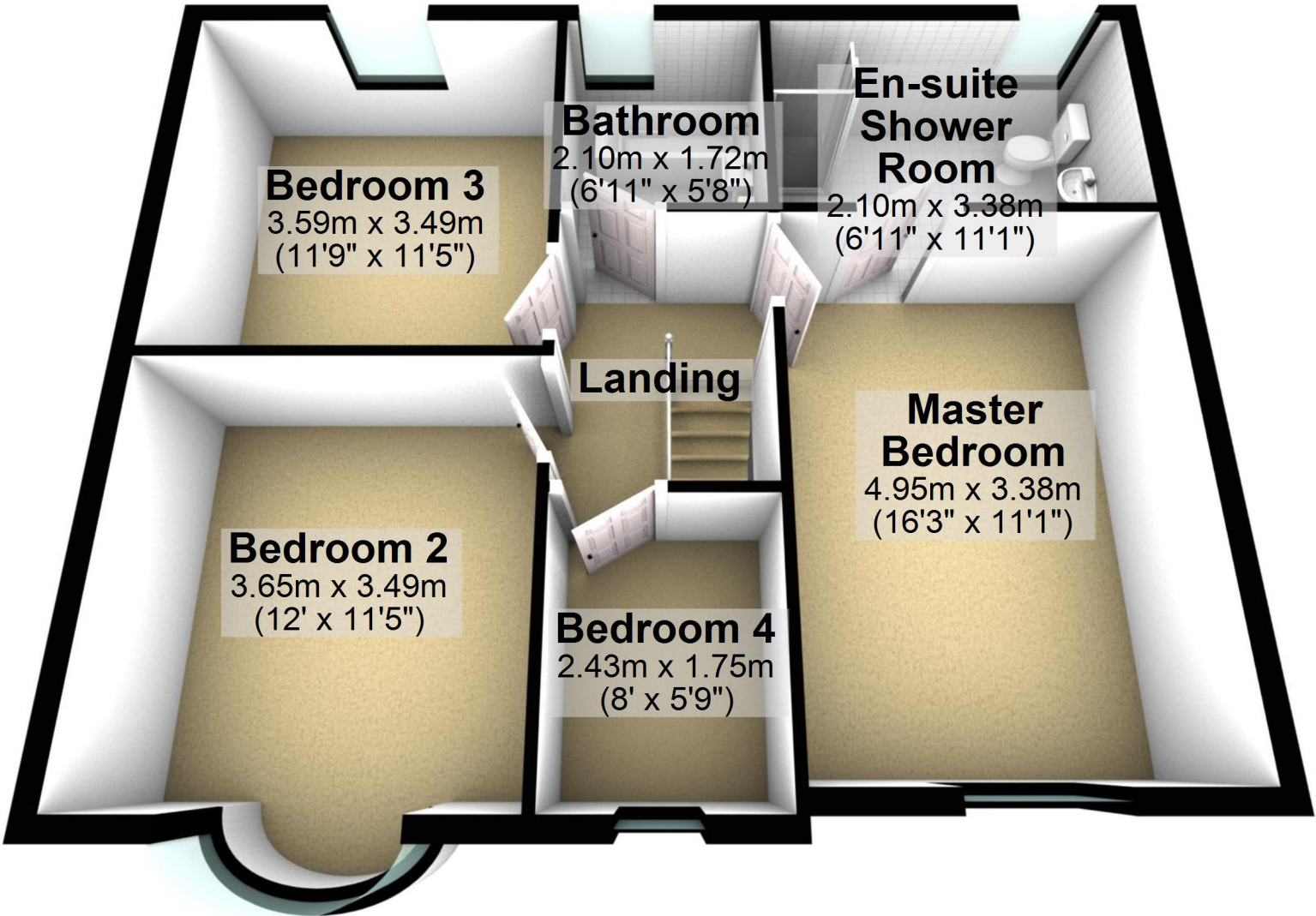
Total area: approx. 130.6 sq. metres (1406.3 sq. feet)

For illustrative purposes only. Not to scale. All sizes are approximate.

Plan produced using PlanUp.

# First Floor

Approx. 65.2 sq. metres (701.7 sq. feet)



**Bedroom 3**  
3.59m x 3.49m  
(11'9" x 11'5")

**Bathroom**  
2.10m x 1.72m  
(6'11" x 5'8")

**En-suite  
Shower  
Room**  
2.10m x 3.38m  
(6'11" x 11'1")

**Landing**

**Bedroom 2**  
3.65m x 3.49m  
(12' x 11'5")

**Master  
Bedroom**  
4.95m x 3.38m  
(16'3" x 11'1")

**Bedroom 4**  
2.43m x 1.75m  
(8' x 5'9")