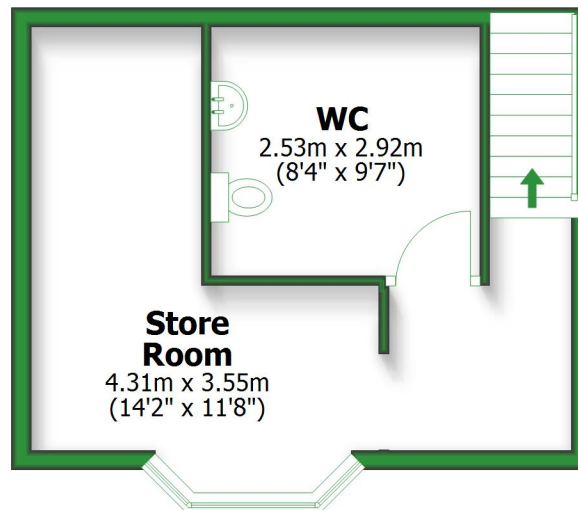


Basement

Approx. 24.0 sq. metres (258.5 sq. feet)

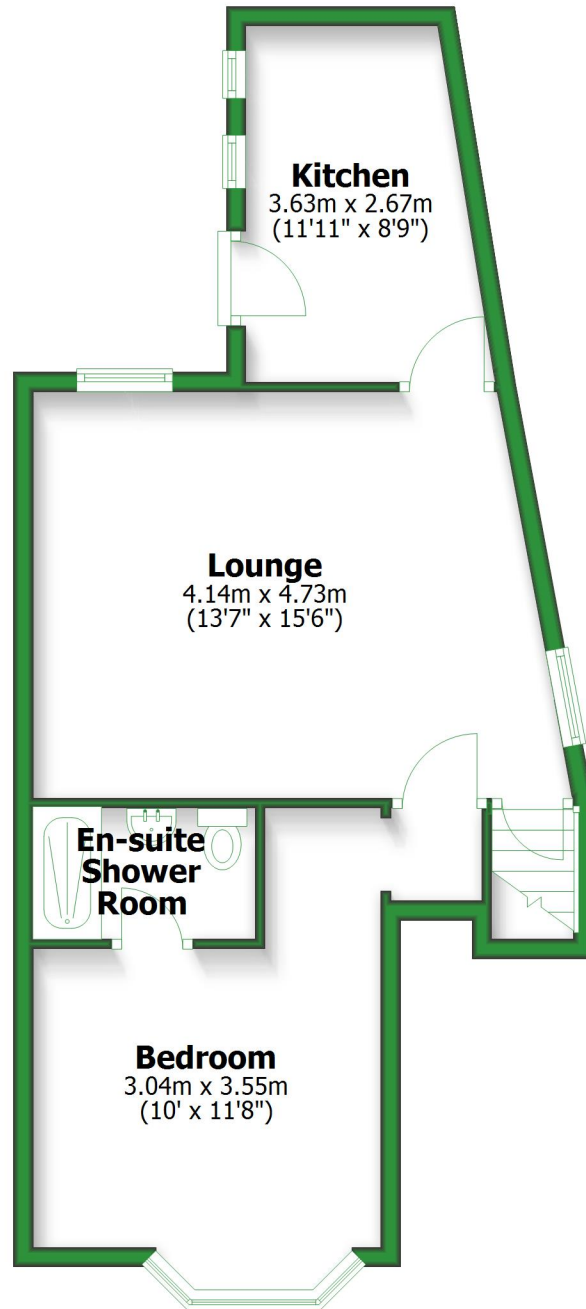


Total area: approx. 72.5 sq. metres (780.5 sq. feet)

For illustrative purposes only. Not to scale. All sizes are approximate.
Plan produced using PlanUp.

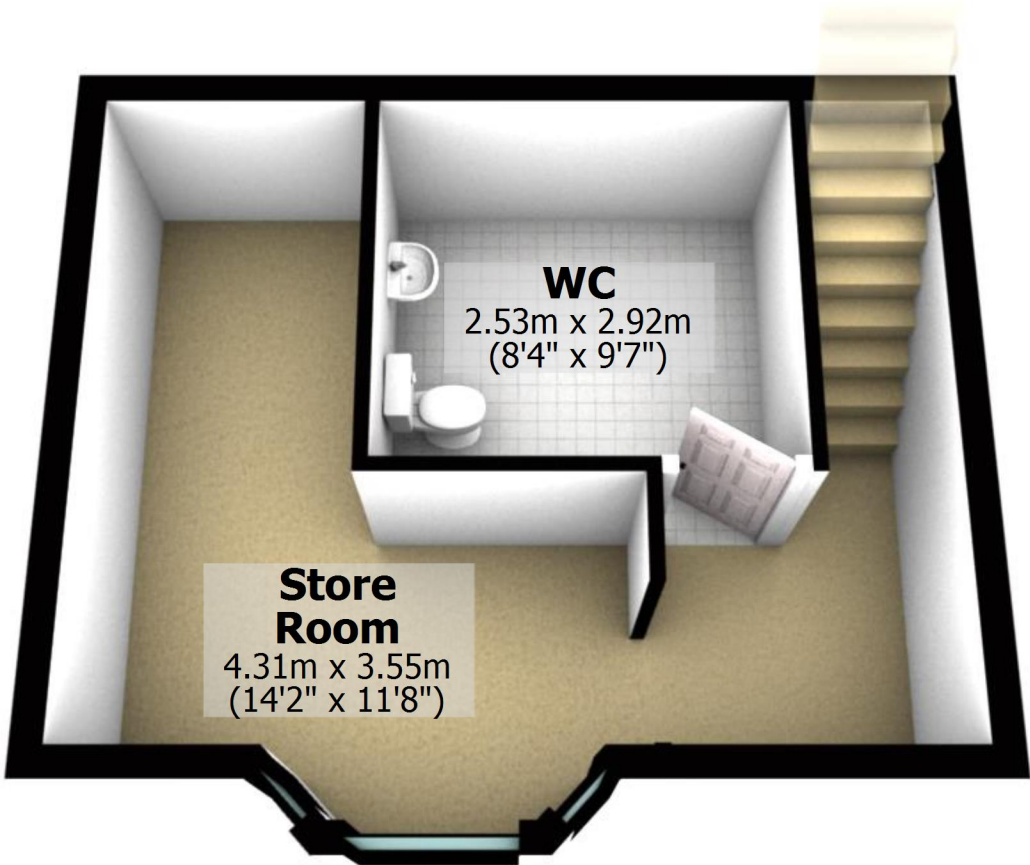
Ground Floor

Approx. 48.5 sq. metres (522.1 sq. feet)



Basement

Approx. 24.0 sq. metres (258.5 sq. feet)



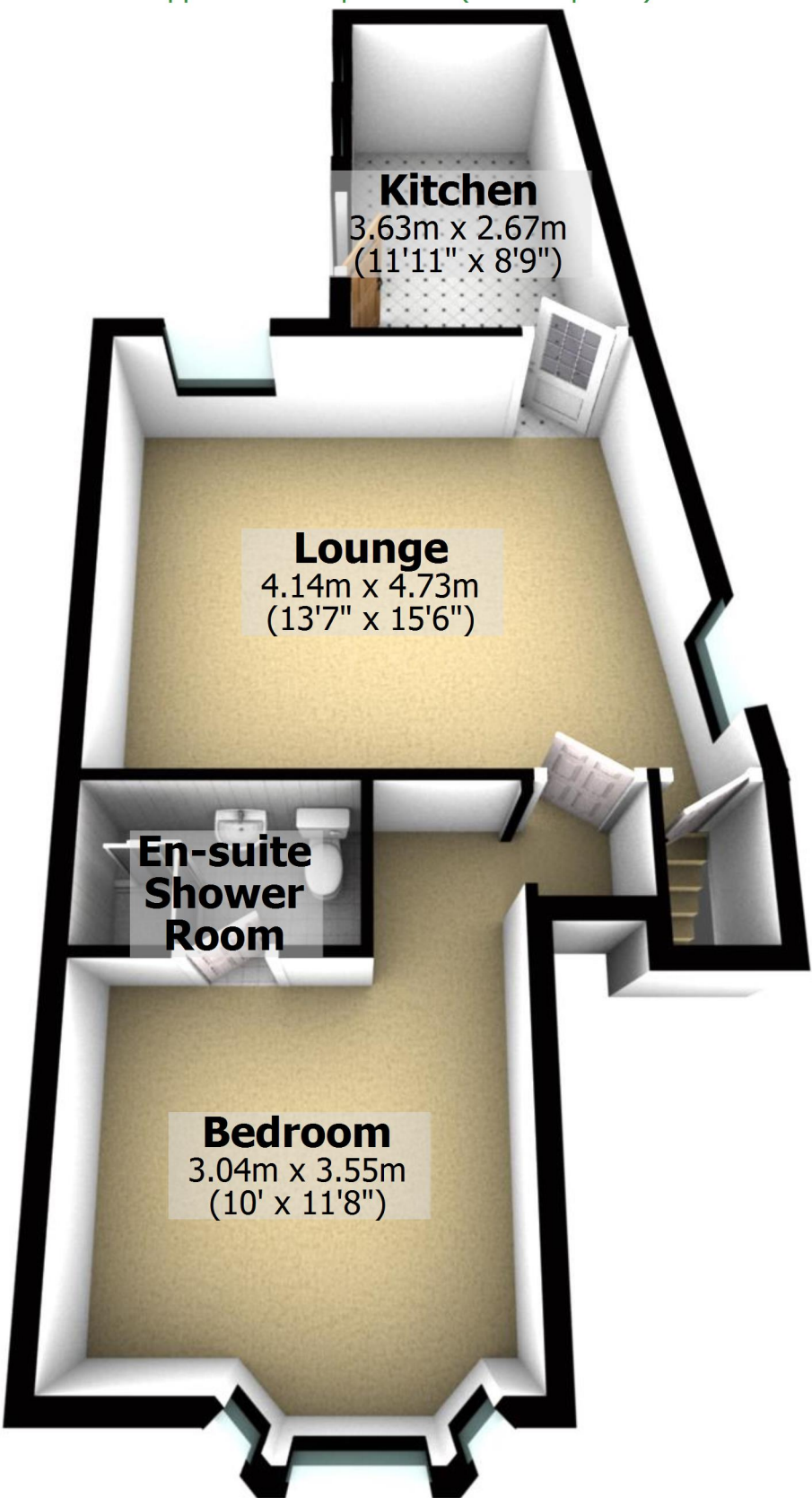
Total area: approx. 72.5 sq. metres (780.5 sq. feet)

For illustrative purposes only. Not to scale. All sizes are approximate.

Plan produced using PlanUp.

Ground Floor

Approx. 48.5 sq. metres (522.1 sq. feet)



Kitchen

3.63m x 2.67m
(11'11" x 8'9")

Lounge

4.14m x 4.73m
(13'7" x 15'6")

En-suite Shower Room

Bedroom

3.04m x 3.55m
(10' x 11'8")