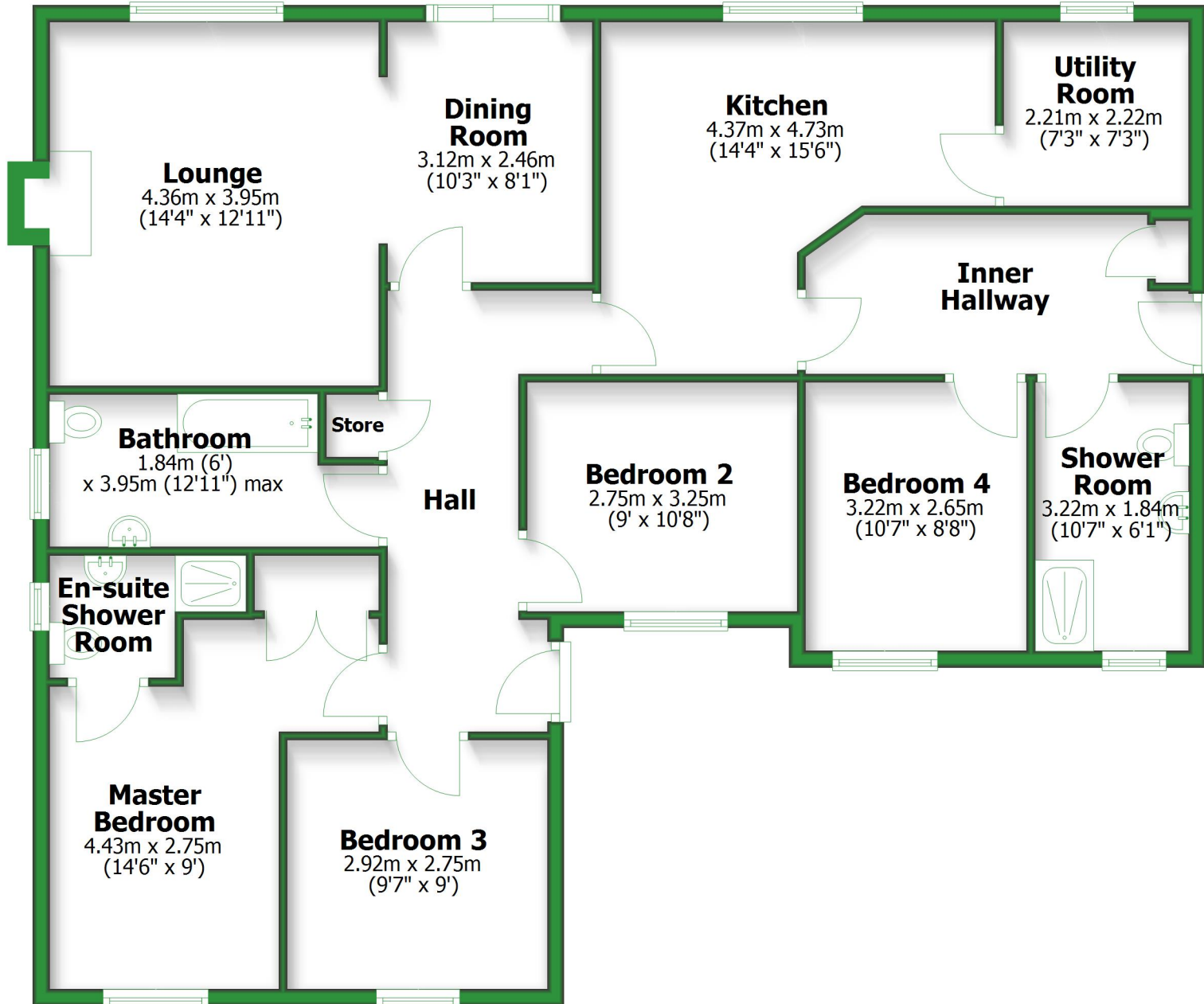


Ground Floor

Approx. 125.3 sq. metres (1348.6 sq. feet)



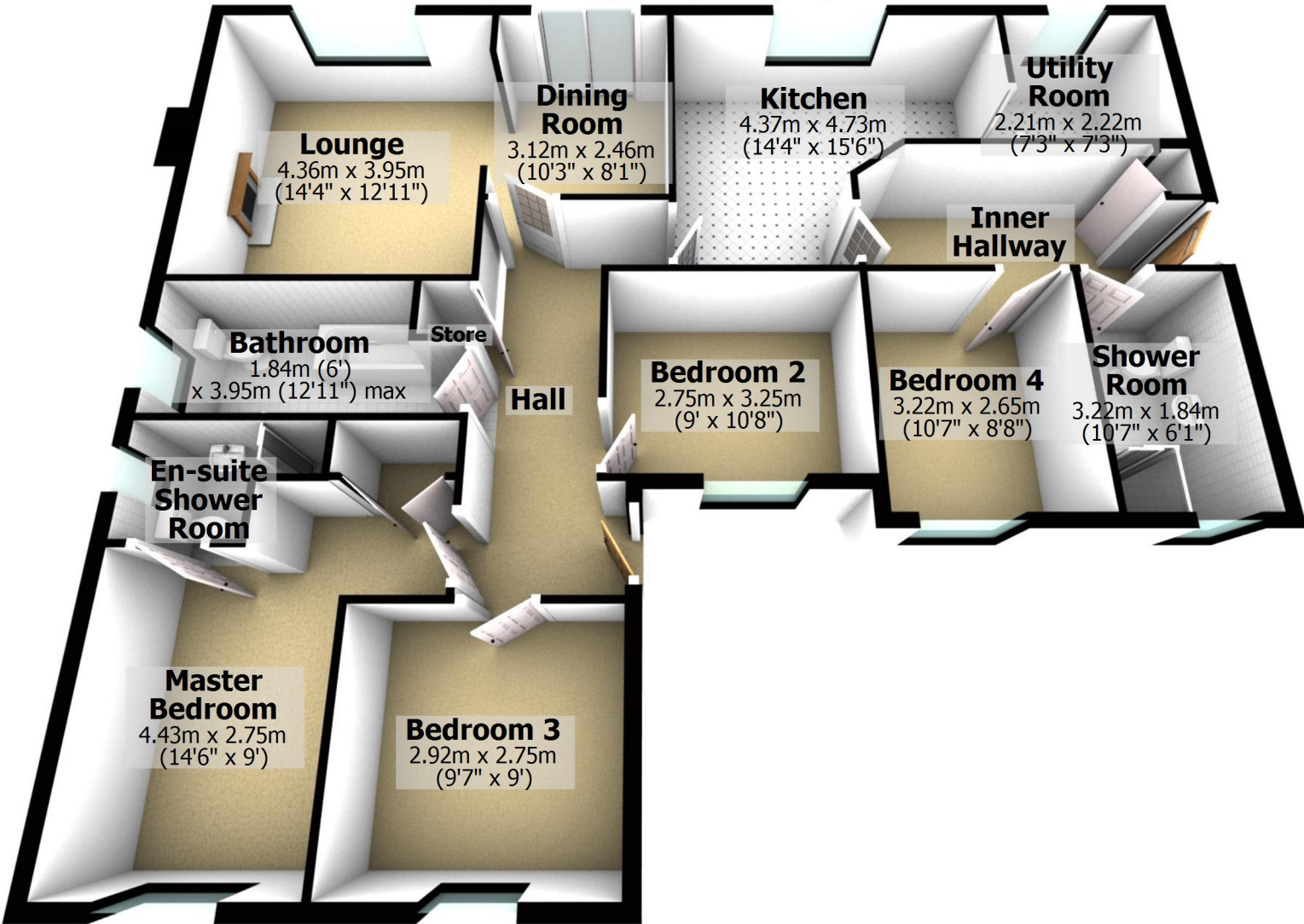
Total area: approx. 125.3 sq. metres (1348.6 sq. feet)

For illustrative purposes only. Not to scale. All sizes are approximate.

Plan produced using PlanUp.

Ground Floor

Approx. 125.3 sq. metres (1348.6 sq. feet)



Total area: approx. 125.3 sq. metres (1348.6 sq. feet)

For illustrative purposes only. Not to scale. All sizes are approximate.

Plan produced using PlanUp.