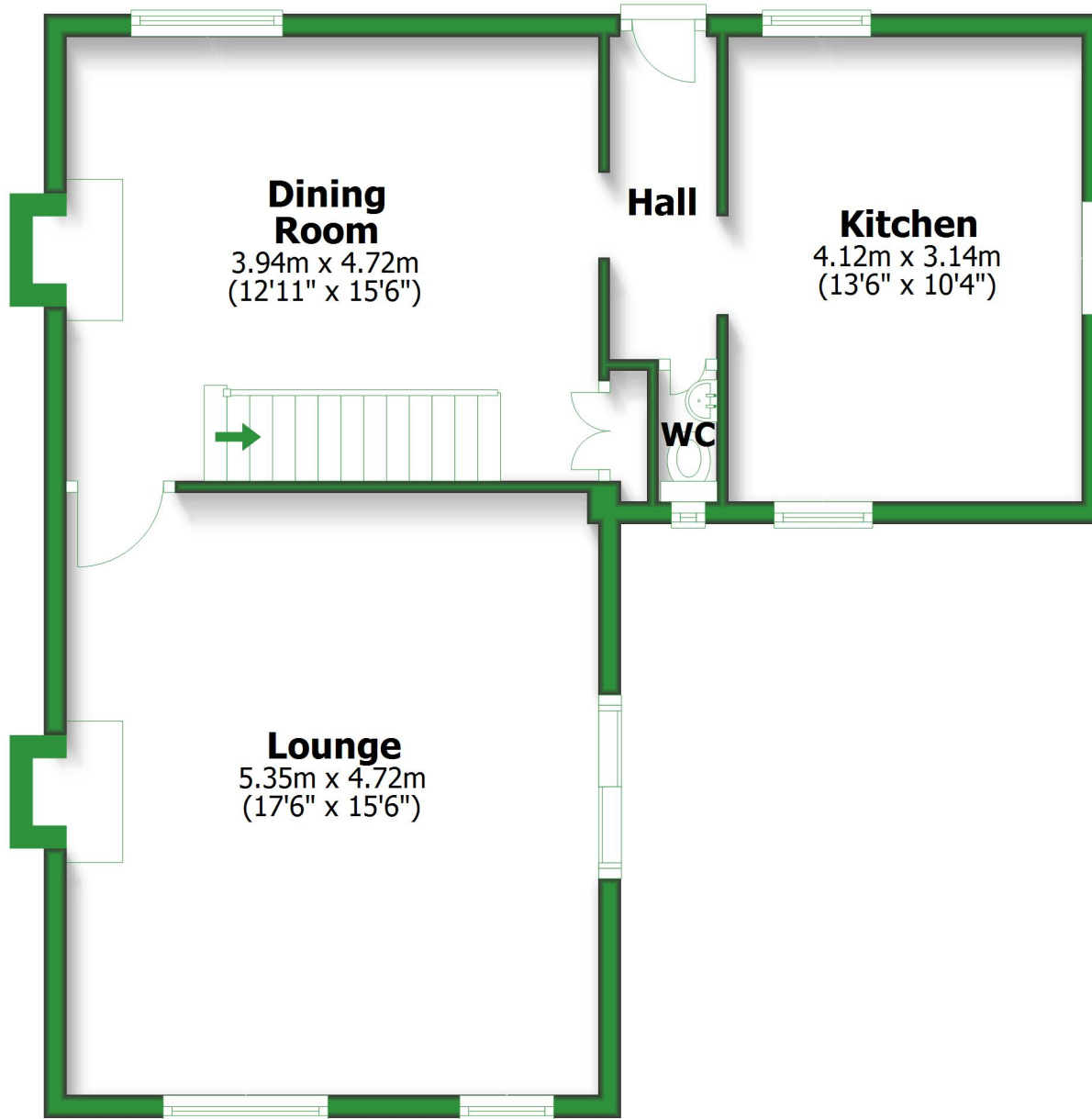


# Ground Floor

Approx. 62.0 sq. metres (667.1 sq. feet)



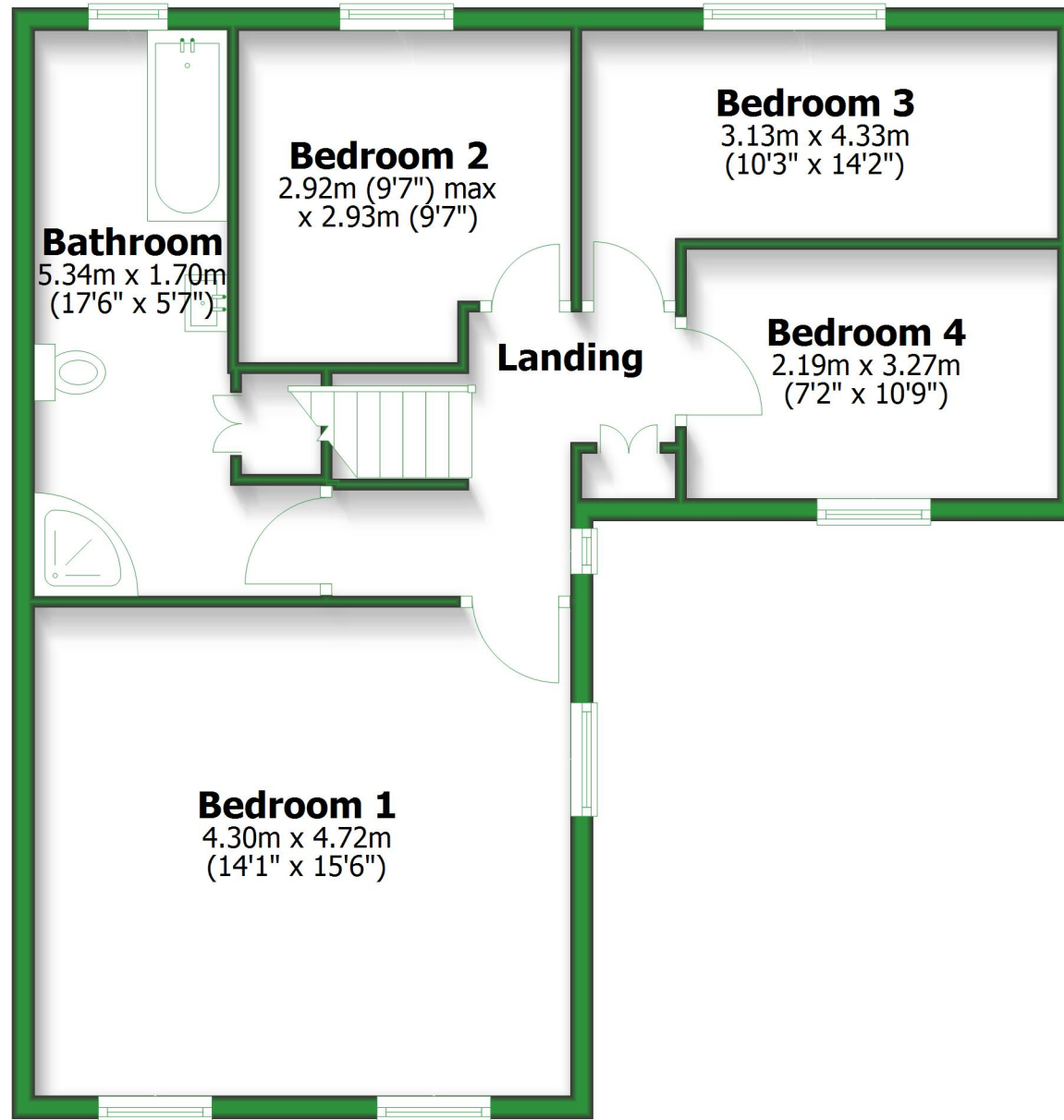
Total area: approx. 123.5 sq. metres (1329.0 sq. feet)

For illustrative purposes only. Not to scale. All sizes are approximate.

Plan produced using PlanUp.

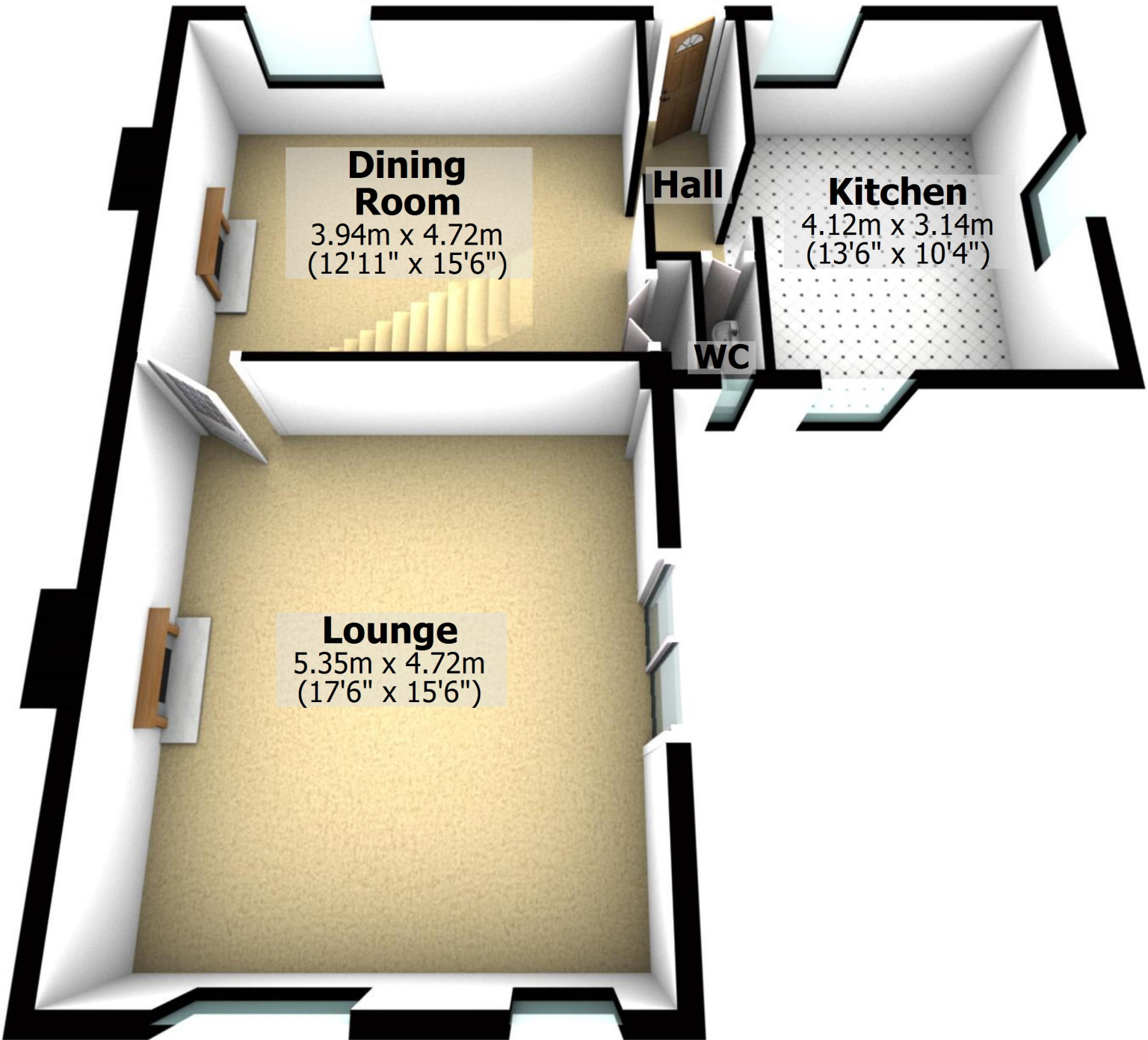
# First Floor

Approx. 61.5 sq. metres (661.9 sq. feet)



## Ground Floor

Approx. 62.0 sq. metres (667.1 sq. feet)



### Dining Room

3.94m x 4.72m  
(12'11" x 15'6")

### Hall

### Kitchen

4.12m x 3.14m  
(13'6" x 10'4")

### WC

### Lounge

5.35m x 4.72m  
(17'6" x 15'6")

Total area: approx. 123.5 sq. metres (1329.0 sq. feet)

For illustrative purposes only. Not to scale. All sizes are approximate.

Plan produced using PlanUp.

# First Floor

Approx. 61.5 sq. metres (661.9 sq. feet)

## Bathroom

5.34m x 1.70m  
(17'6" x 5'7")

## Bedroom 2

2.92m (9'7") max  
x 2.93m (9'7")

## Bedroom 3

3.13m x 4.33m  
(10'3" x 14'2")

## Landing

## Bedroom 4

2.19m x 3.27m  
(7'2" x 10'9")

## Bedroom 1

4.30m x 4.72m  
(14'1" x 15'6")

