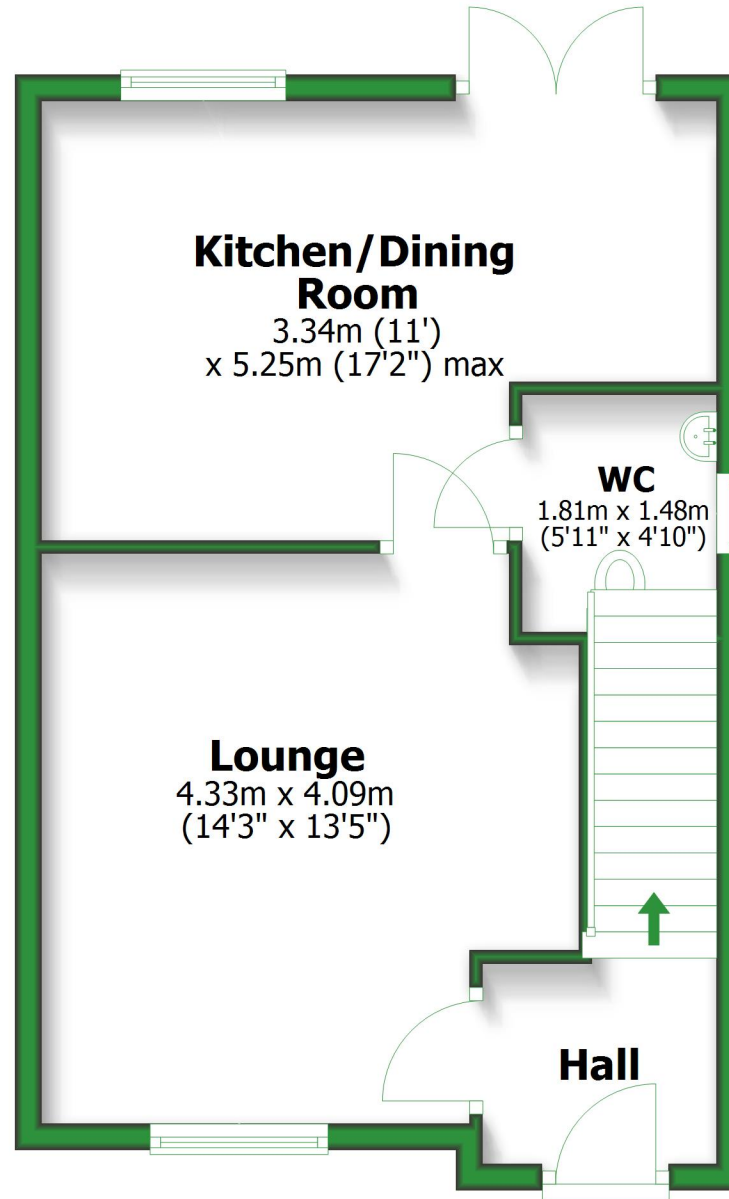


# Ground Floor

Approx. 40.5 sq. metres (435.6 sq. feet)

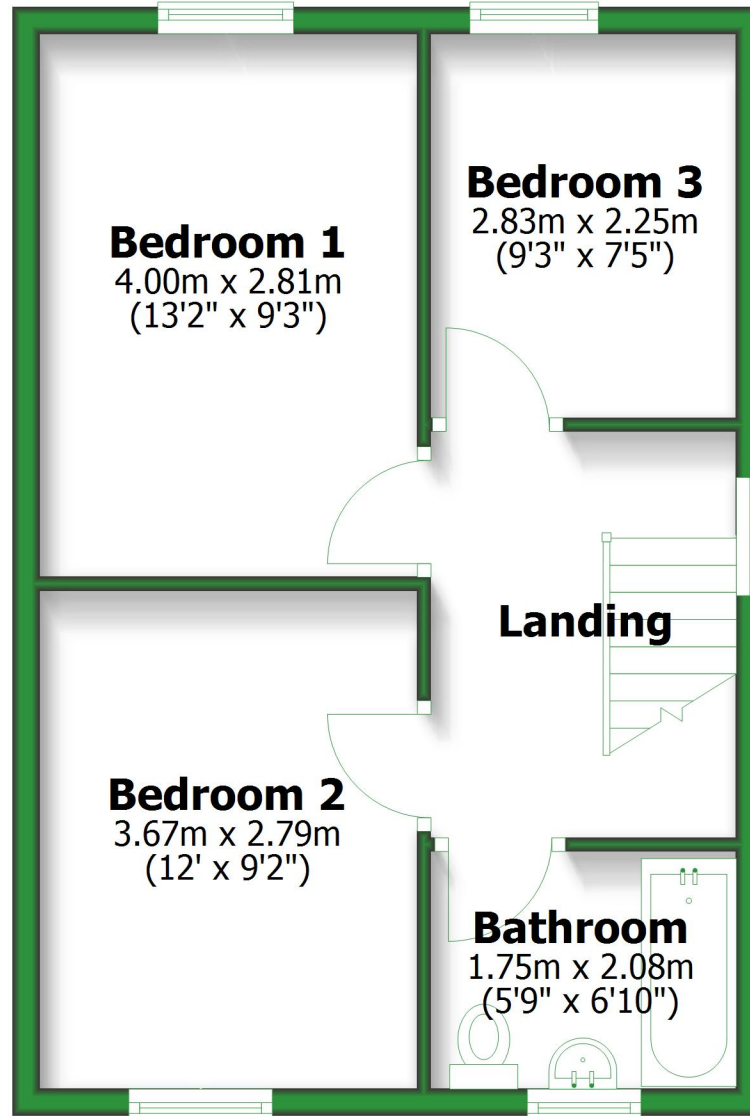


Total area: approx. 80.4 sq. metres (865.3 sq. feet)

For illustrative purposes only. Not to scale. All sizes are approximate.  
Plan produced using PlanUp.

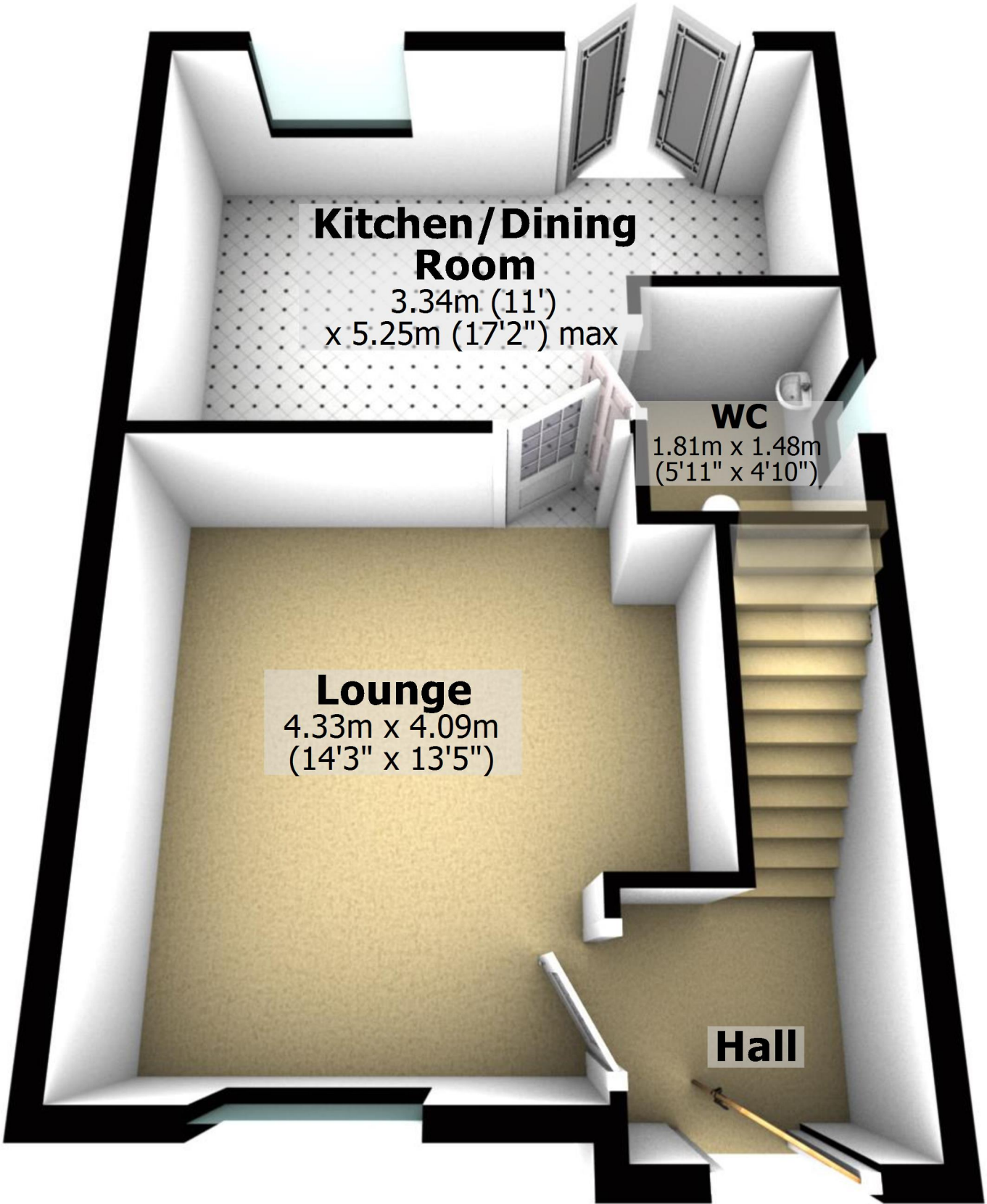
# First Floor

Approx. 39.9 sq. metres (429.7 sq. feet)



# Ground Floor

Approx. 40.5 sq. metres (435.6 sq. feet)



## Kitchen/Dining Room

3.34m (11')  
x 5.25m (17'2") max

## WC

1.81m x 1.48m  
(5'11" x 4'10")

## Lounge

4.33m x 4.09m  
(14'3" x 13'5")

## Hall

Total area: approx. 80.4 sq. metres (865.3 sq. feet)

For illustrative purposes only. Not to scale. All sizes are approximate.

Plan produced using PlanUp.

# First Floor

Approx. 39.9 sq. metres (429.7 sq. feet)

**Bedroom 1**  
4.00m x 2.81m  
(13'2" x 9'3")

**Bedroom 3**  
2.83m x 2.25m  
(9'3" x 7'5")

**Bedroom 2**  
3.67m x 2.79m  
(12' x 9'2")

**Landing**

**Bathroom**  
1.75m x 2.08m  
(5'9" x 6'10")

