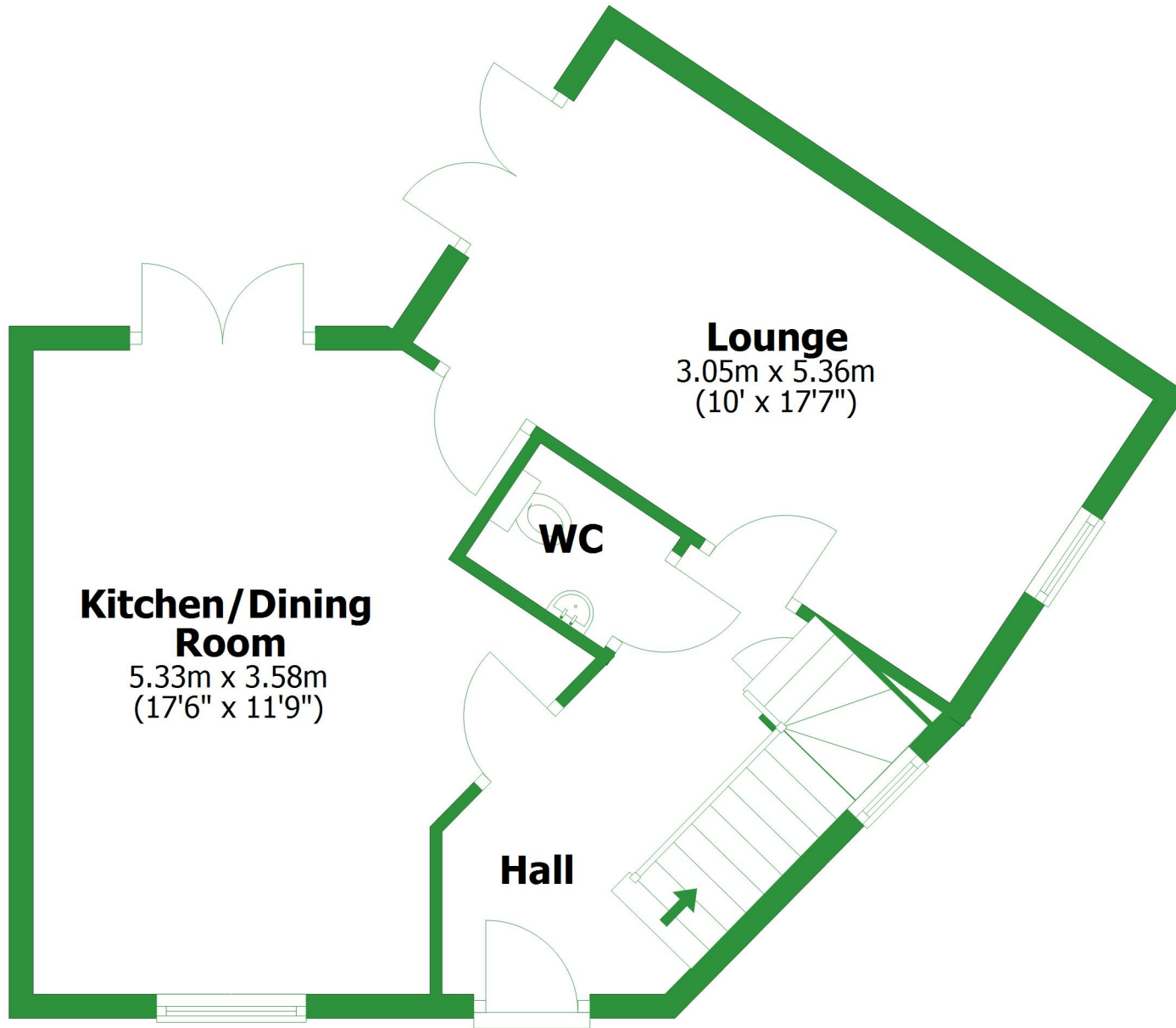


# Ground Floor

Approx. 47.5 sq. metres (511.0 sq. feet)

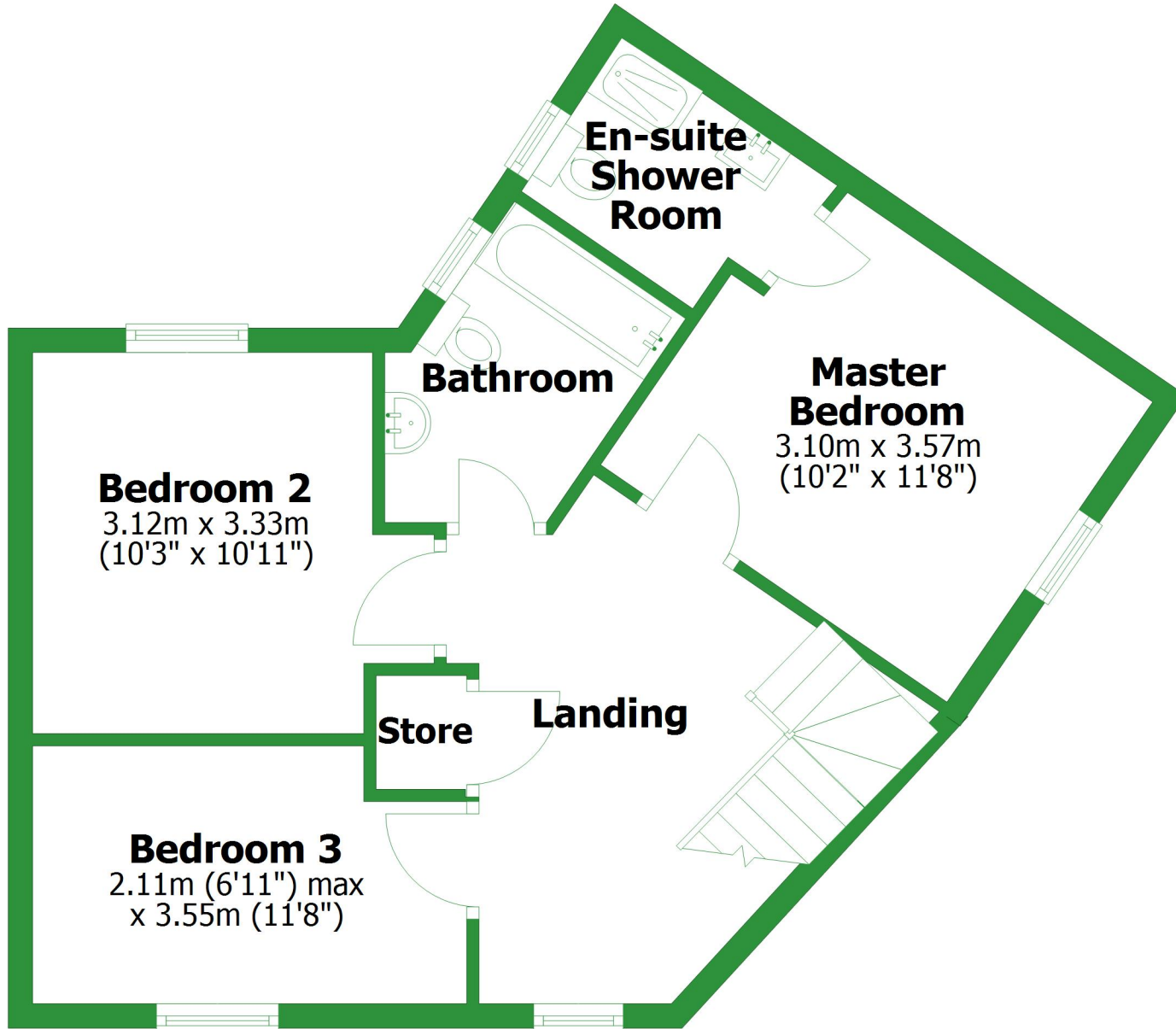


Total area: approx. 94.2 sq. metres (1014.3 sq. feet)

For illustrative purposes only. Not to scale. All sizes are approximate.  
Plan produced using PlanUp.

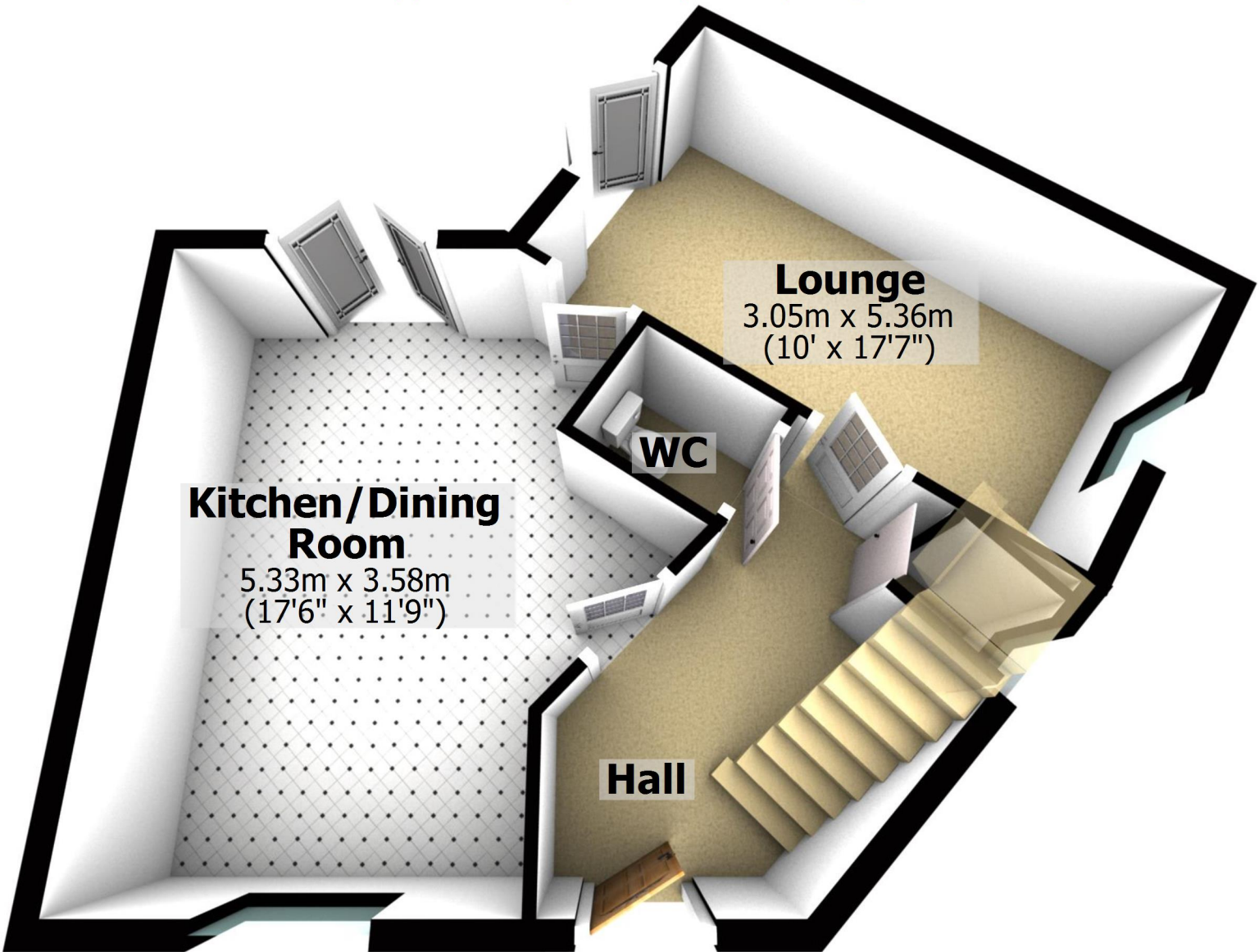
# First Floor

Approx. 46.8 sq. metres (503.3 sq. feet)



## Ground Floor

Approx. 47.5 sq. metres (511.0 sq. feet)



**Kitchen/Dining Room**

5.33m x 3.58m  
(17'6" x 11'9")

**WC**

**Lounge**

3.05m x 5.36m  
(10' x 17'7")

**Hall**

Total area: approx. 94.2 sq. metres (1014.3 sq. feet)

For illustrative purposes only. Not to scale. All sizes are approximate.

Plan produced using PlanUp.

# First Floor

Approx. 46.8 sq. metres (503.3 sq. feet)



**Bedroom 2**  
3.12m x 3.33m  
(10'3" x 10'11")

**Bedroom 3**  
2.11m (6'11") max  
x 3.55m (11'8")

**Store**

**Landing**

**Bathroom**

**En-suite  
Shower  
Room**

**Master  
Bedroom**  
3.10m x 3.57m  
(10'2" x 11'8")