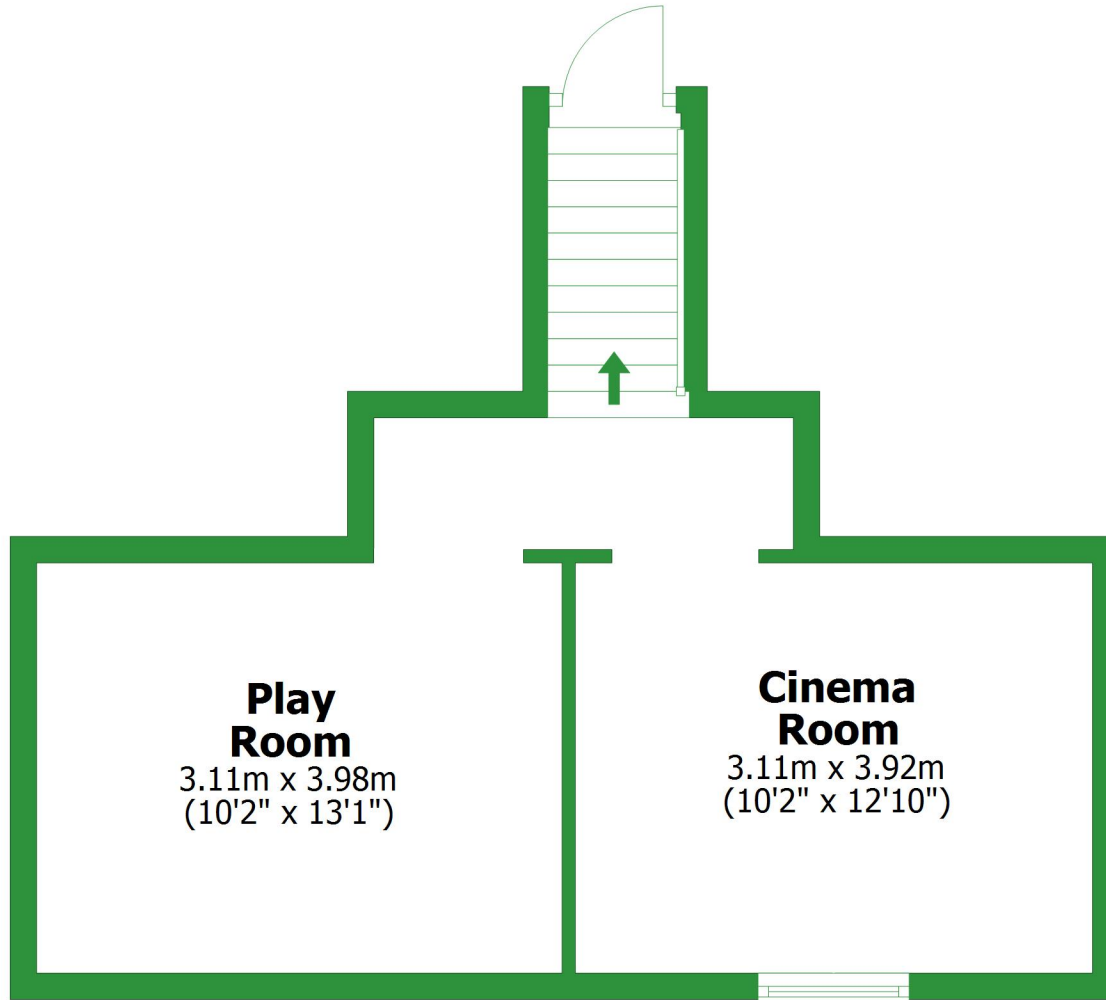


Basement

Approx. 30.7 sq. metres (330.6 sq. feet)

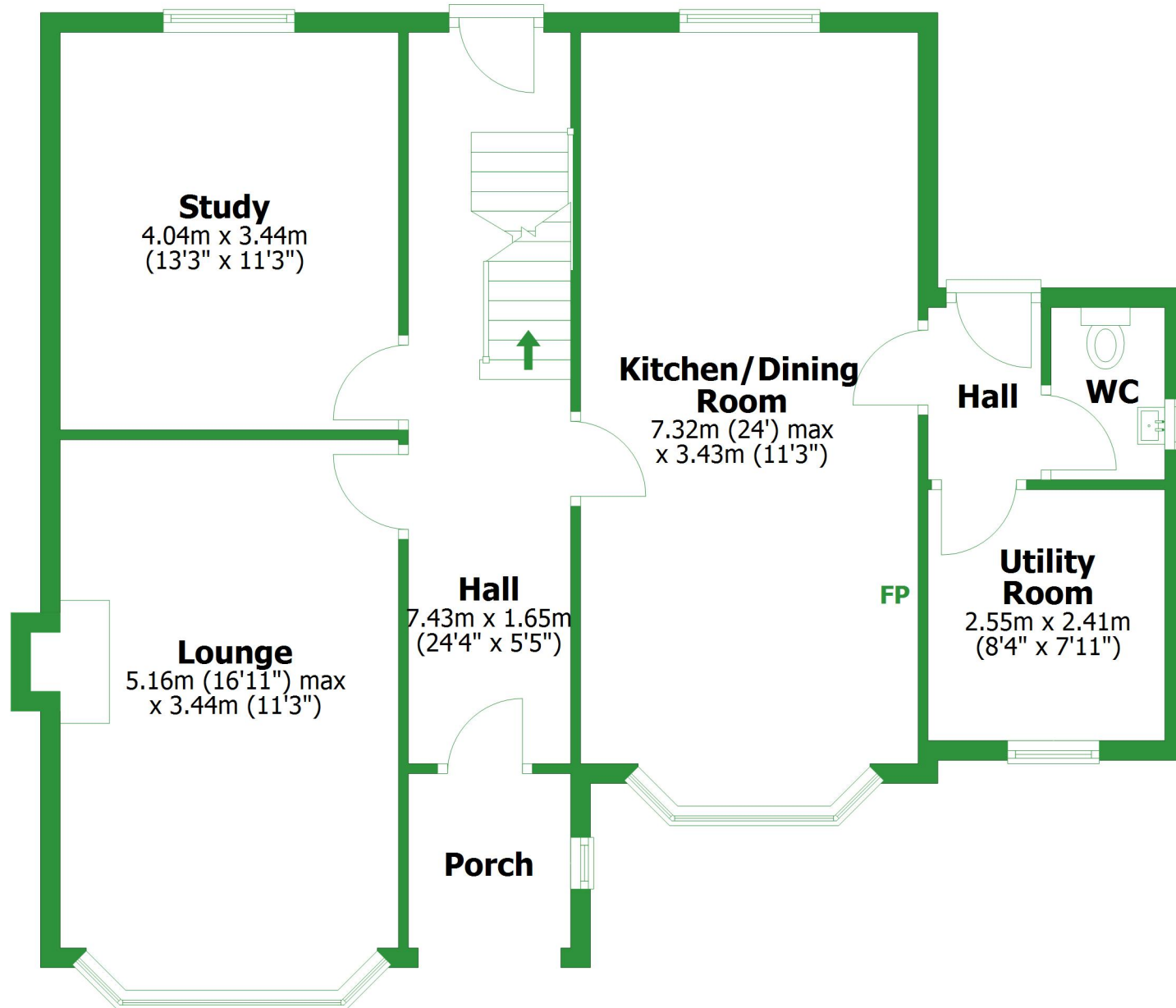


Total area: approx. 223.2 sq. metres (2402.1 sq. feet)

For illustrative purposes only. Not to scale. All sizes are approximate.
Plan produced using PlanUp.

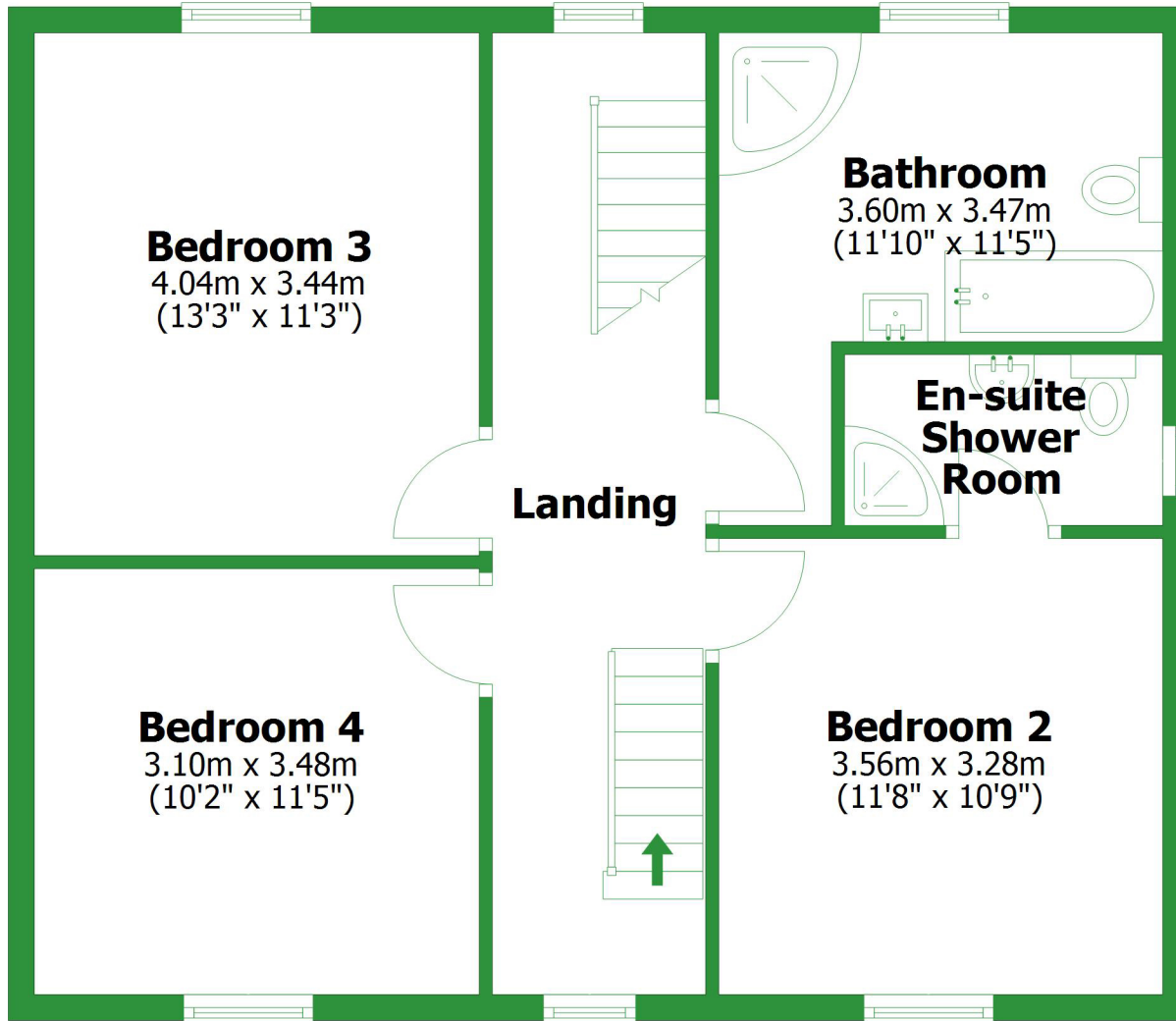
Ground Floor

Approx. 86.3 sq. metres (928.4 sq. feet)



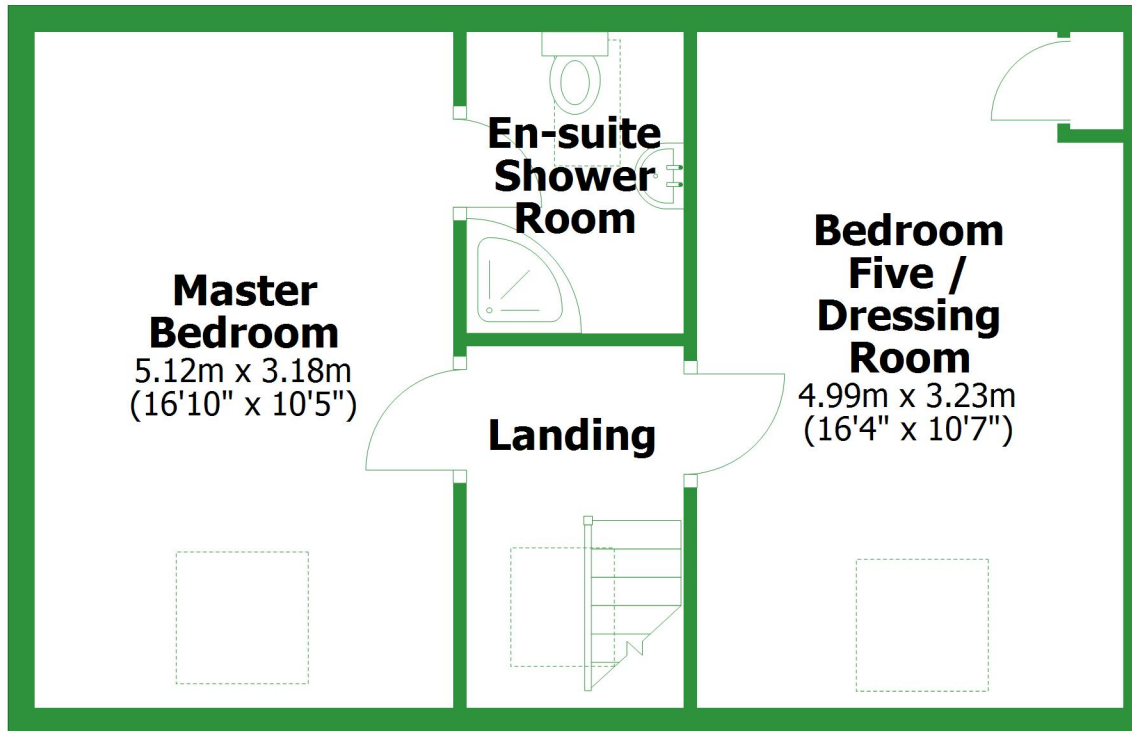
Approx. 63.9 sq. metres (687.9 sq. feet)

First Floor



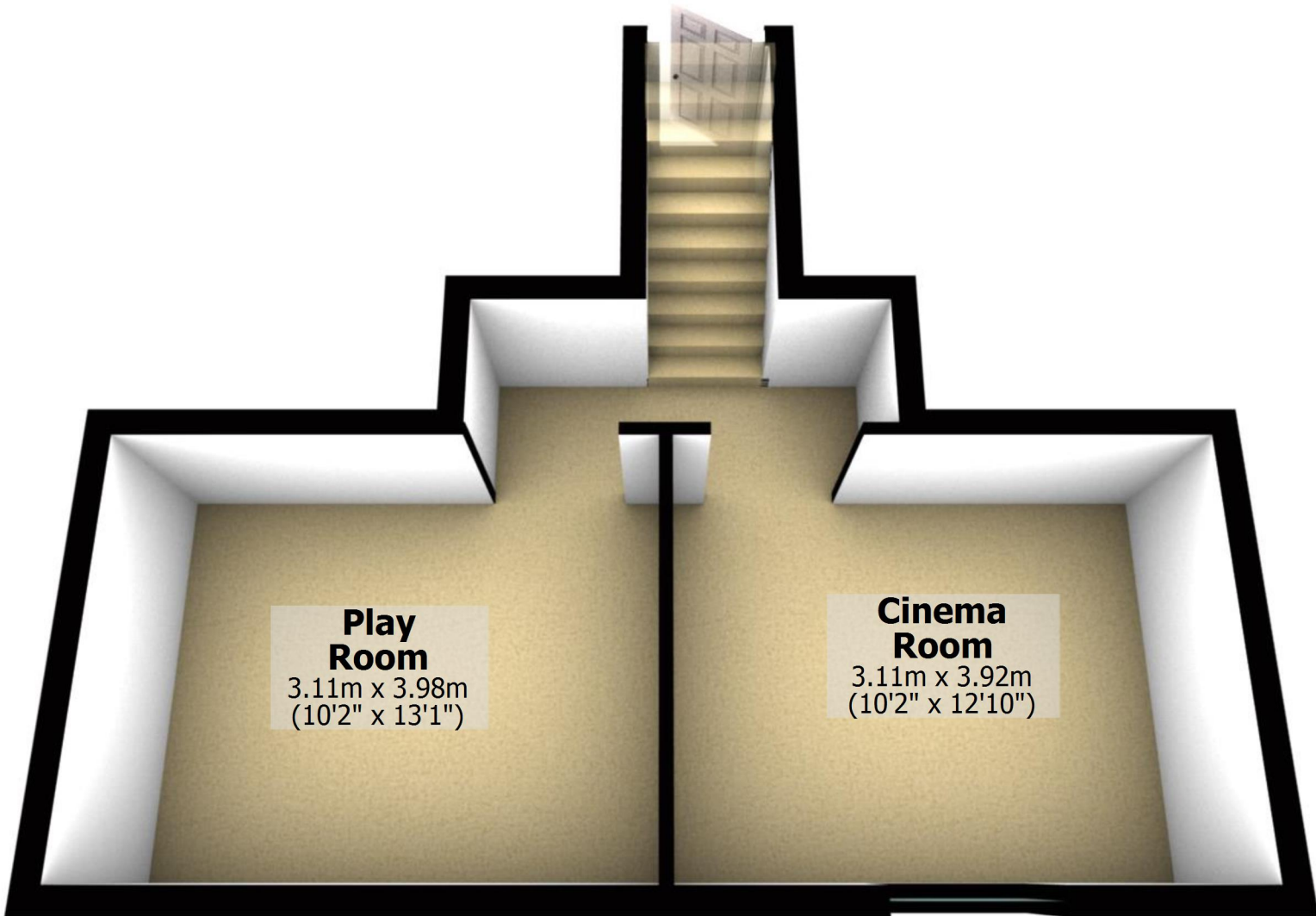
Second Floor

Approx. 42.3 sq. metres (455.2 sq. feet)



Basement

Approx. 30.7 sq. metres (330.6 sq. feet)

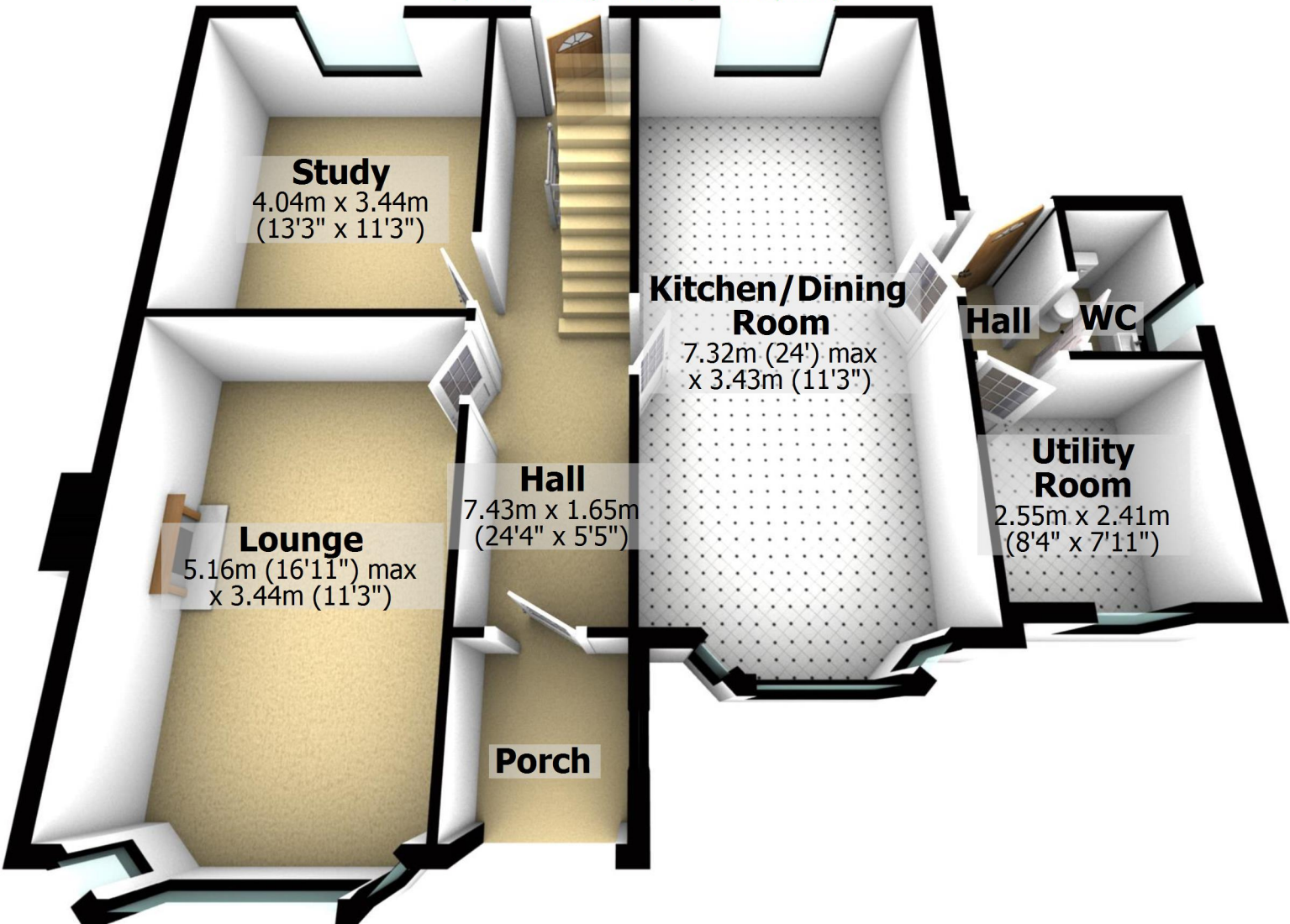


Total area: approx. 223.2 sq. metres (2402.1 sq. feet)

For illustrative purposes only. Not to scale. All sizes are approximate.
Plan produced using PlanUp.

Ground Floor

Approx. 86.3 sq. metres (928.4 sq. feet)



Study

4.04m x 3.44m
(13'3" x 11'3")

Lounge

5.16m (16'11") max
x 3.44m (11'3")

Hall

7.43m x 1.65m
(24'4" x 5'5")

Porch

Kitchen/Dining Room

7.32m (24') max
x 3.43m (11'3")

Hall WC

Utility Room

2.55m x 2.41m
(8'4" x 7'11")

First Floor

Approx. 63.9 sq. metres (687.9 sq. feet)

Bedroom 3
4.04m x 3.44m
(13'3" x 11'3")

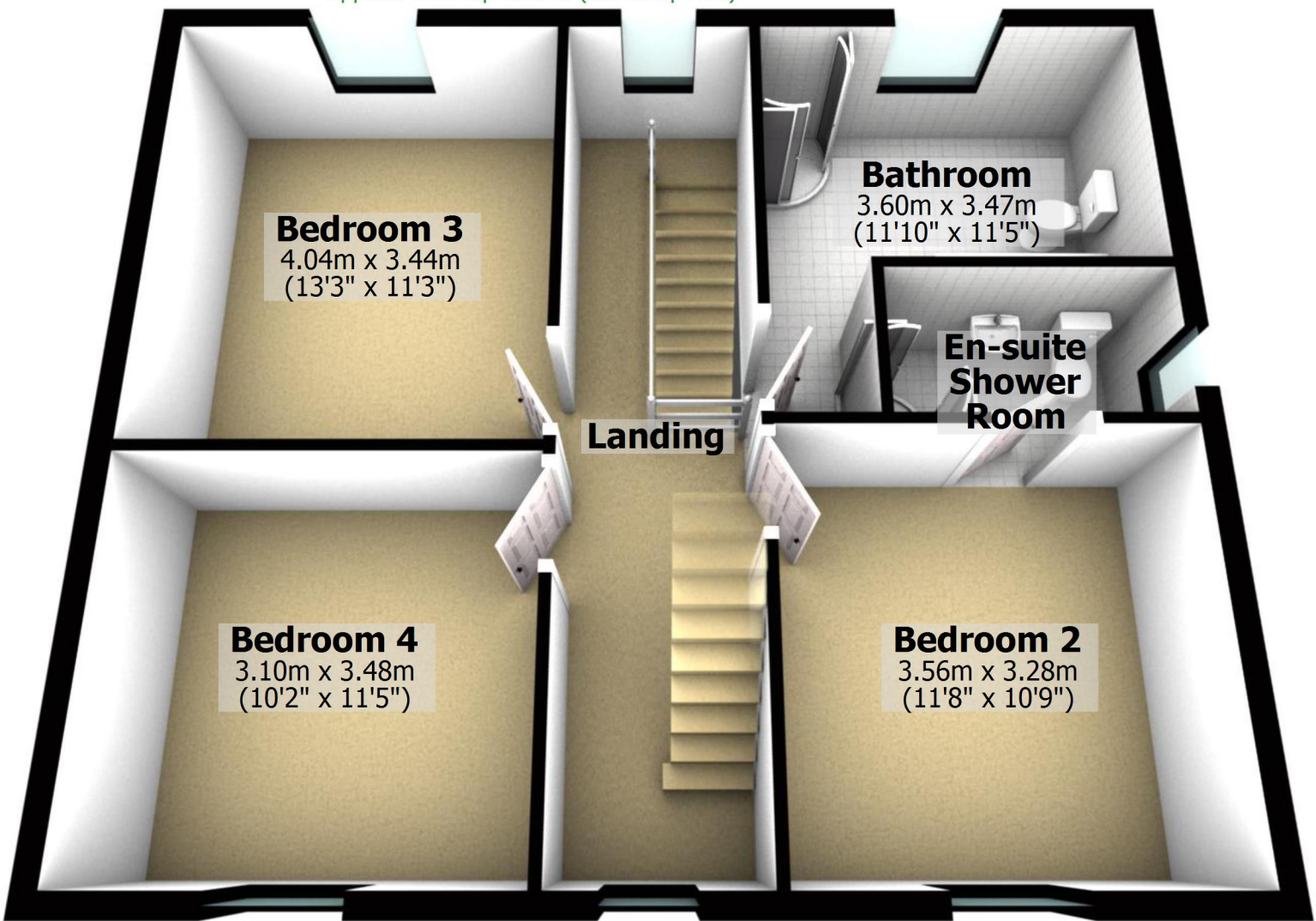
Bathroom
3.60m x 3.47m
(11'10" x 11'5")

**En-suite
Shower
Room**

Landing

Bedroom 4
3.10m x 3.48m
(10'2" x 11'5")

Bedroom 2
3.56m x 3.28m
(11'8" x 10'9")



Second Floor

Approx. 42.3 sq. metres (455.2 sq. feet)

