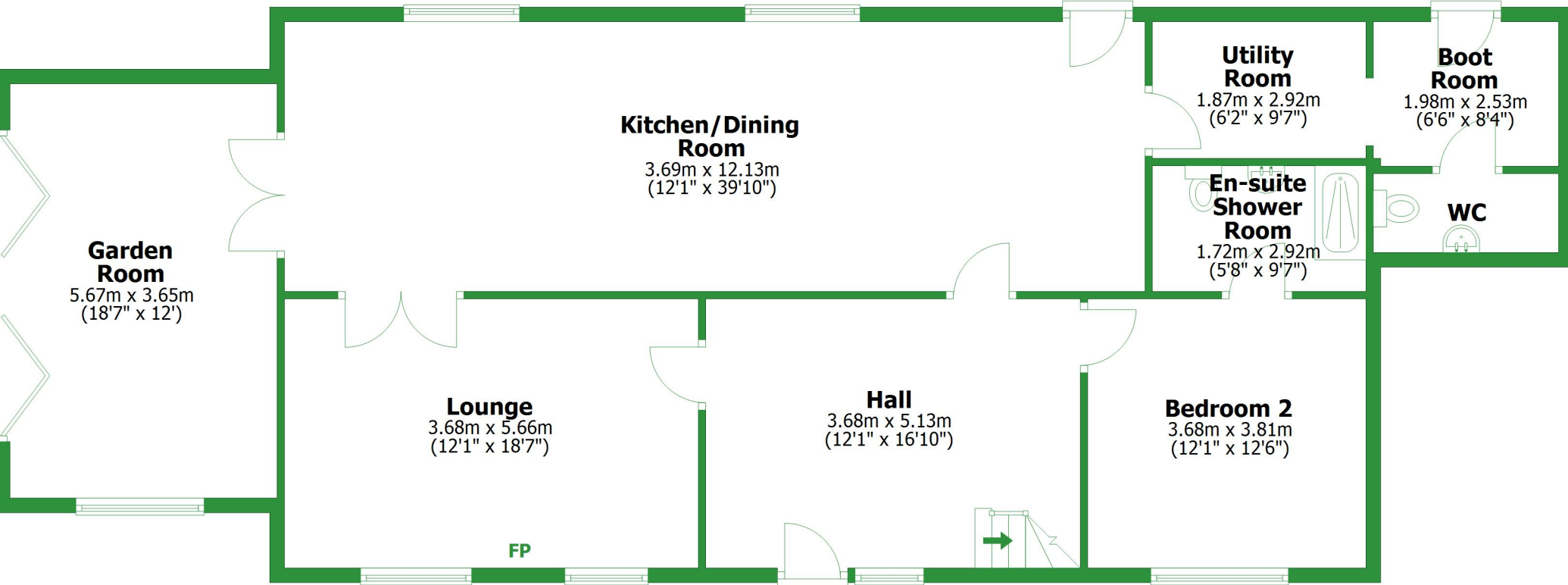


# Ground Floor

Approx. 140.1 sq. metres (1508.1 sq. feet)

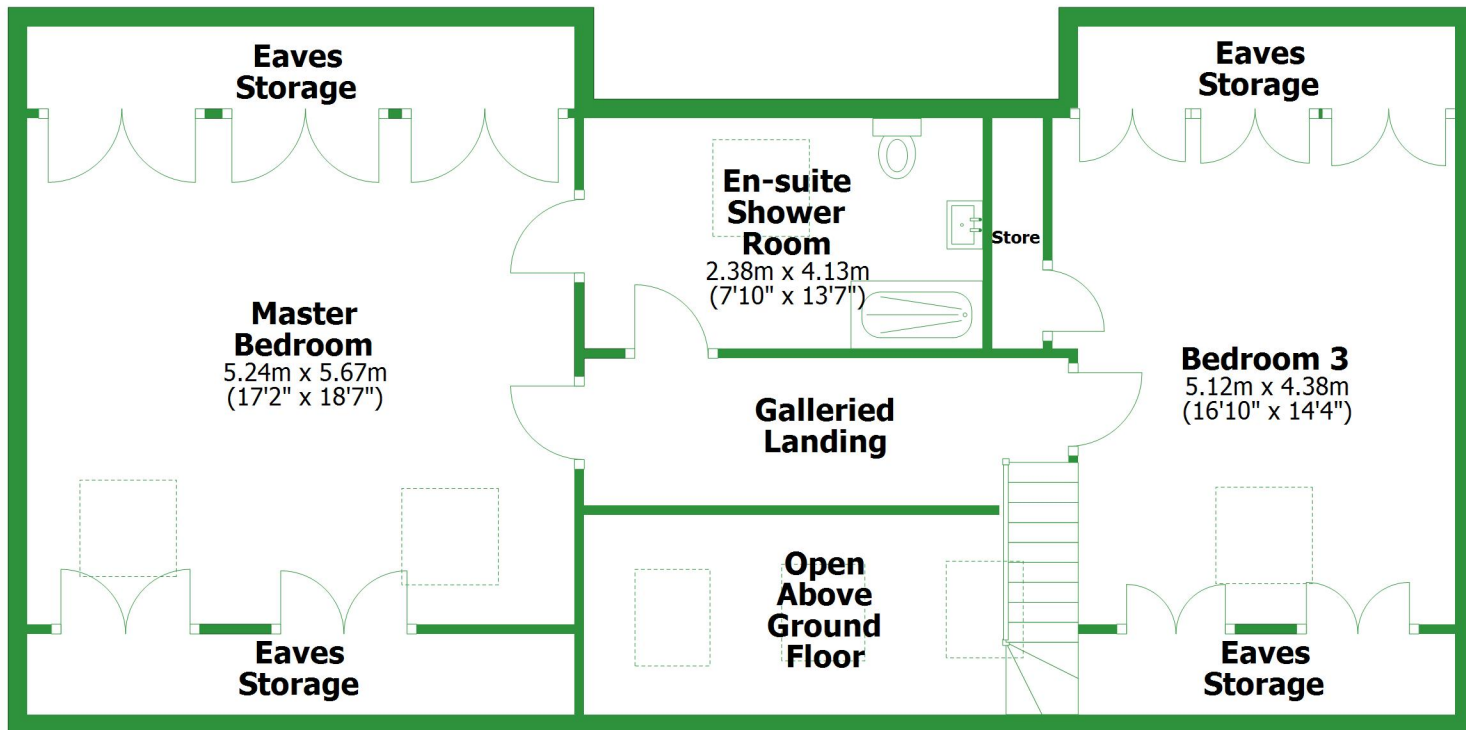


Total area: approx. 250.7 sq. metres (2699.0 sq. feet)

For illustrative purposes only. Not to scale. All sizes are approximate.  
Plan produced using PlanUp.

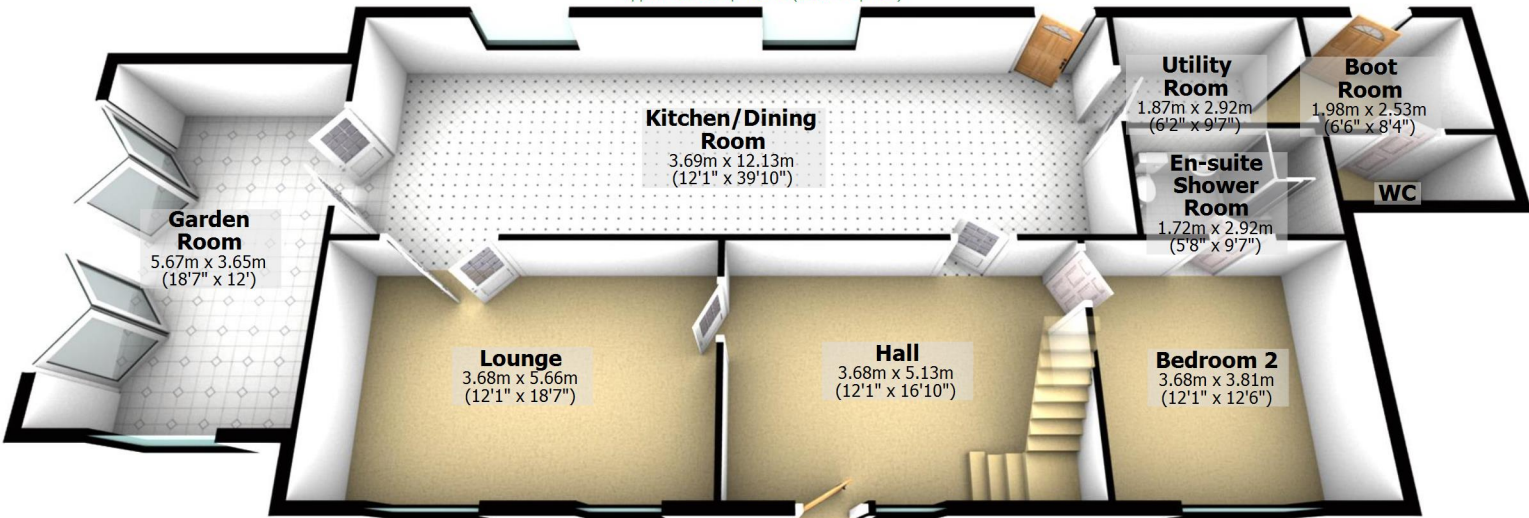
## First Floor

Approx. 110.6 sq. metres (1190.9 sq. feet)



## Ground Floor

Approx. 140.1 sq. metres (1508.1 sq. feet)



Total area: approx. 250.7 sq. metres (2699.0 sq. feet)

For illustrative purposes only. Not to scale. All sizes are approximate.  
Plan produced using PlanUp.

## First Floor

Approx. 110.6 sq. metres (1190.9 sq. feet)

