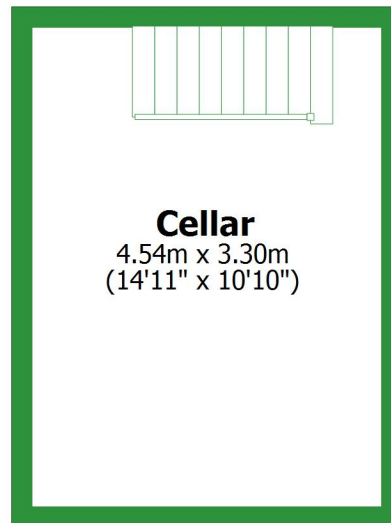


Basement

Approx. 15.0 sq. metres (161.2 sq. feet)



Cellar
4.54m x 3.30m
(14'11" x 10'10")

Total area: approx. 124.5 sq. metres (1340.1 sq. feet)

For illustrative purposes only. Not to scale. All sizes are approximate.
Plan produced using PlanUp.

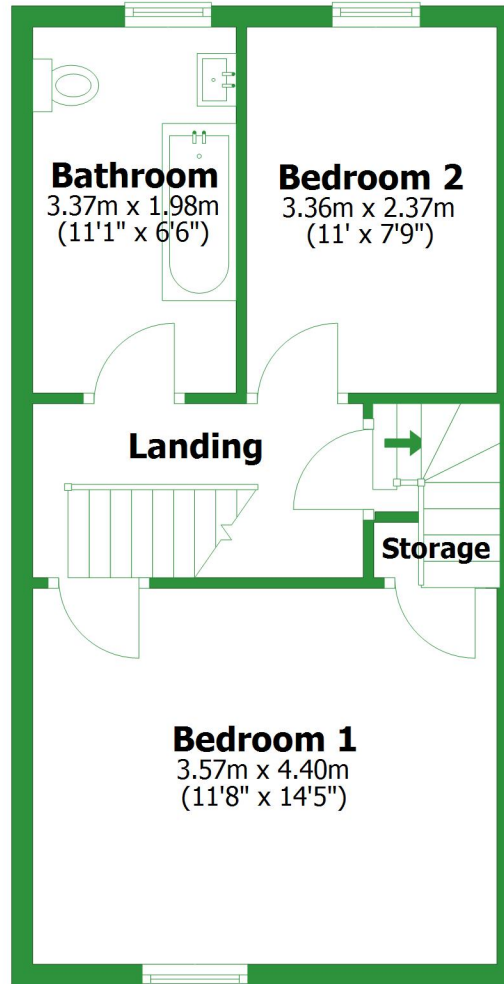
Ground Floor

Approx. 45.1 sq. metres (485.4 sq. feet)



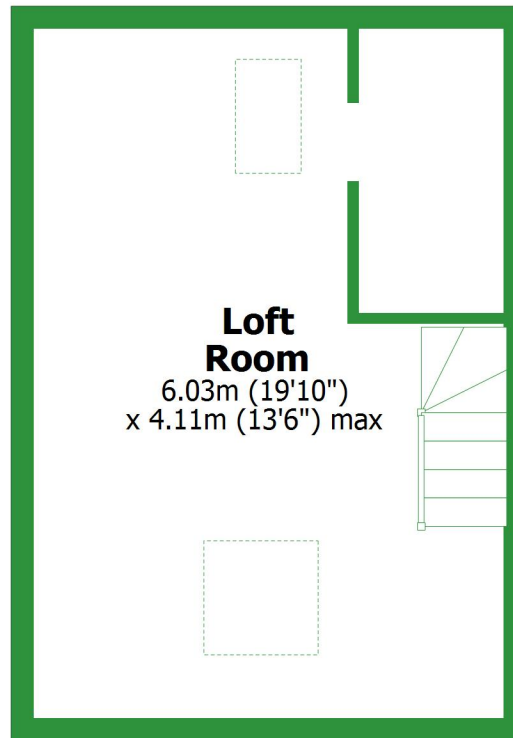
First Floor

Approx. 39.1 sq. metres (421.0 sq. feet)



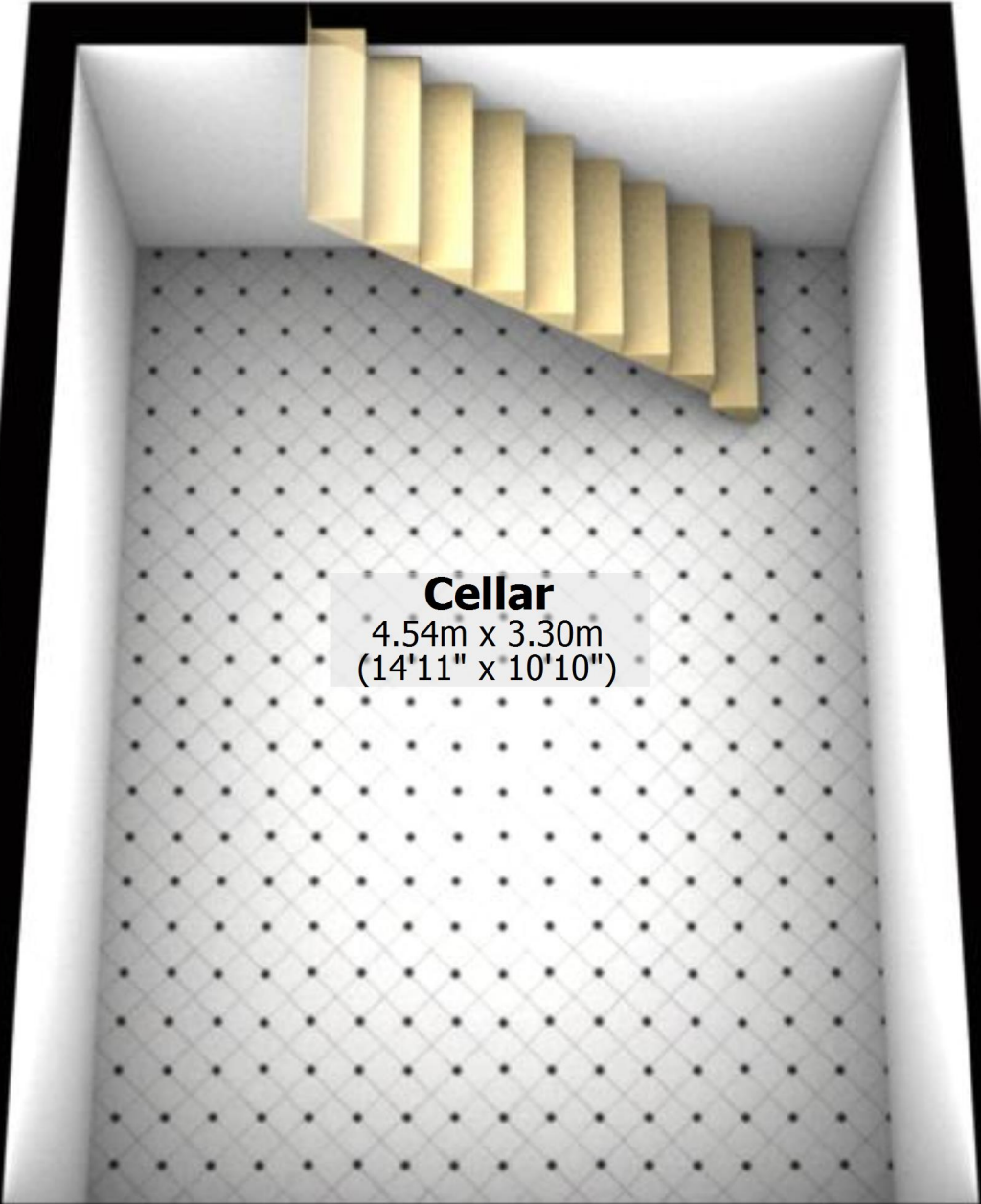
Second Floor

Approx. 25.3 sq. metres (272.5 sq. feet)



Basement

Approx. 15.0 sq. metres (161.2 sq. feet)



Cellar

4.54m x 3.30m
(14'11" x 10'10")

Total area: approx. 124.5 sq. metres (1340.1 sq. feet)

For illustrative purposes only. Not to scale. All sizes are approximate.

Plan produced using PlanUp.

Ground Floor

Approx. 45.1 sq. metres (485.4 sq. feet)

Utility Room

2.78m x 2.08m
(9'1" x 6'10")

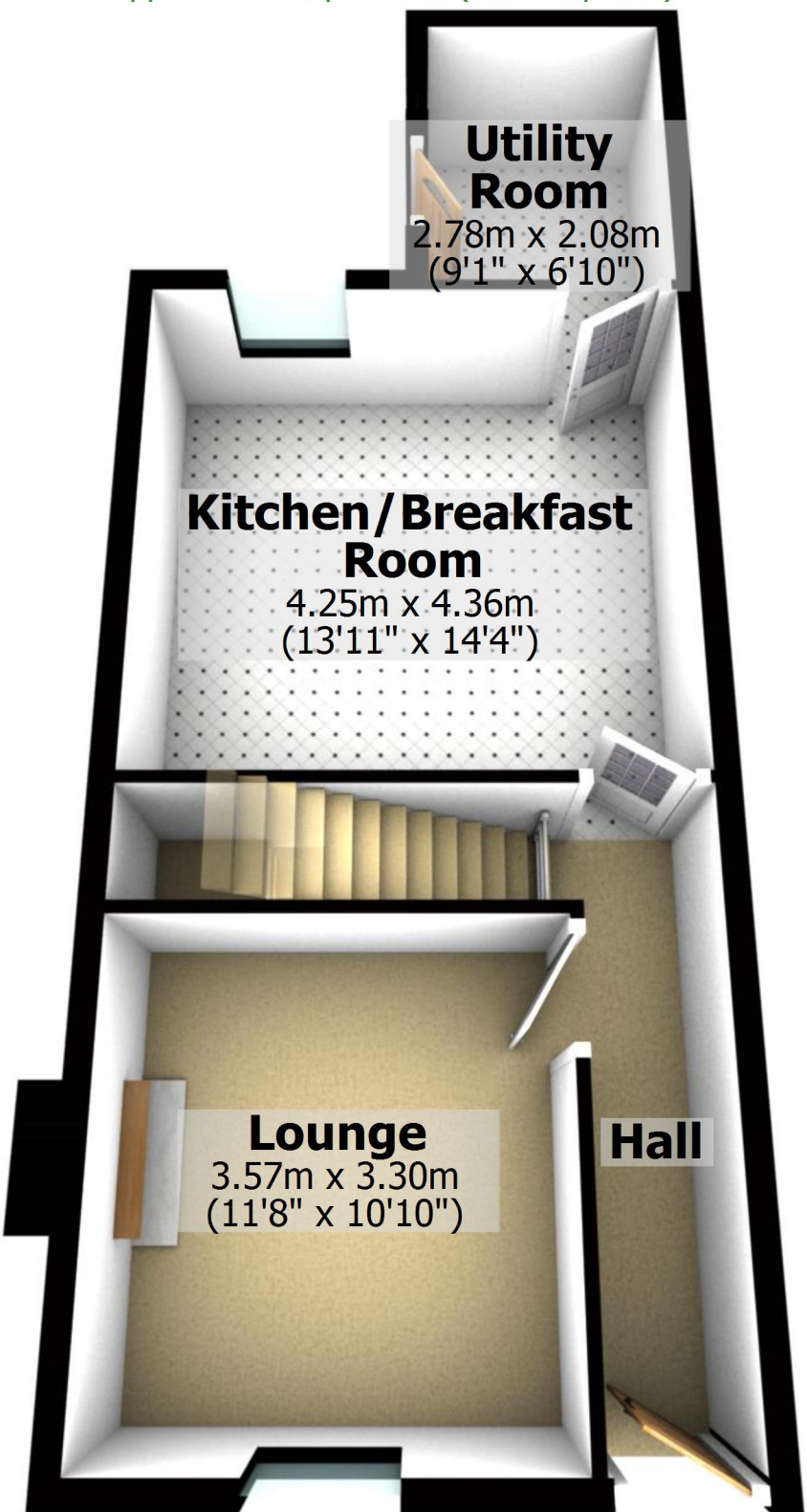
Kitchen/Breakfast Room

4.25m x 4.36m
(13'11" x 14'4")

Lounge

3.57m x 3.30m
(11'8" x 10'10")

Hall



First Floor

Approx. 39.1 sq. metres (421.0 sq. feet)

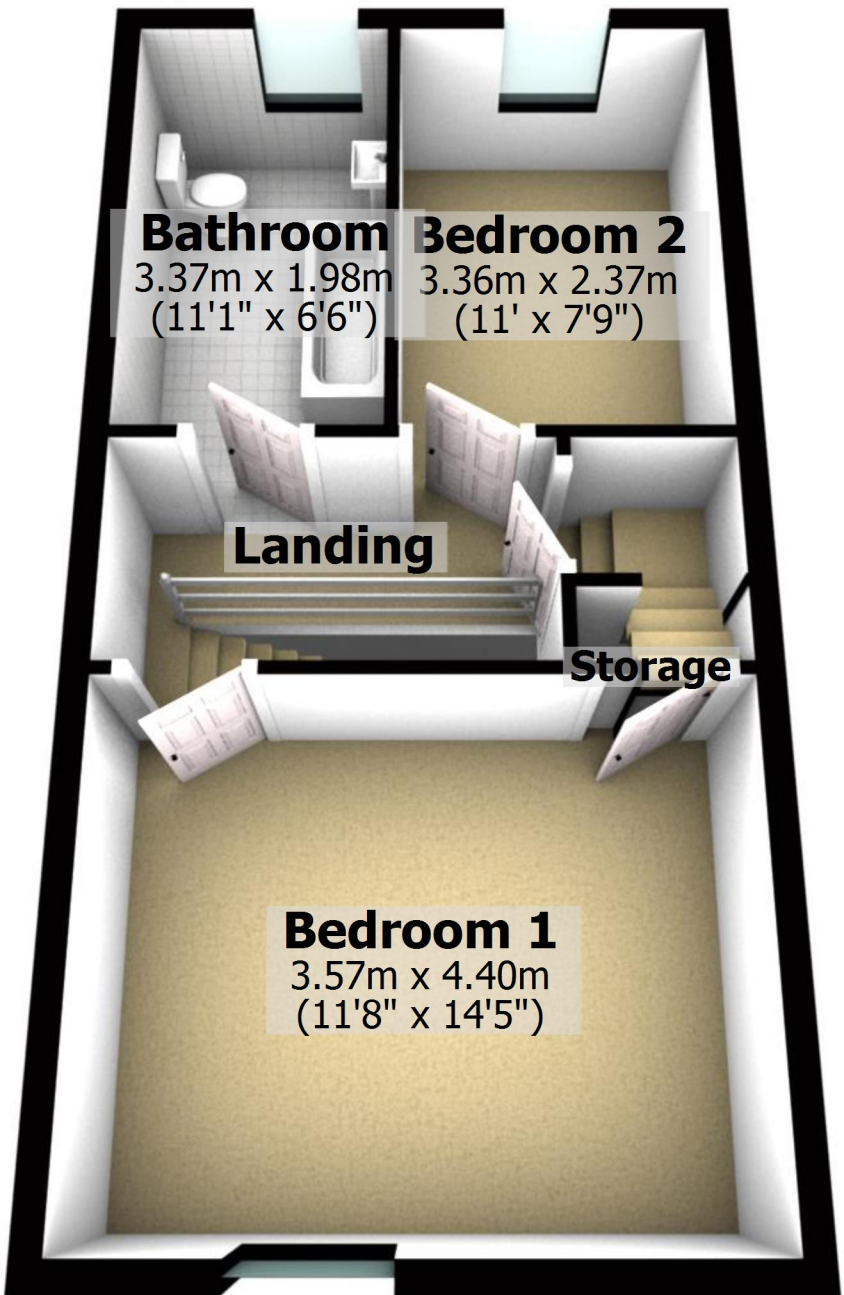
Bathroom
3.37m x 1.98m
(11'1" x 6'6")

Bedroom 2
3.36m x 2.37m
(11' x 7'9")

Landing

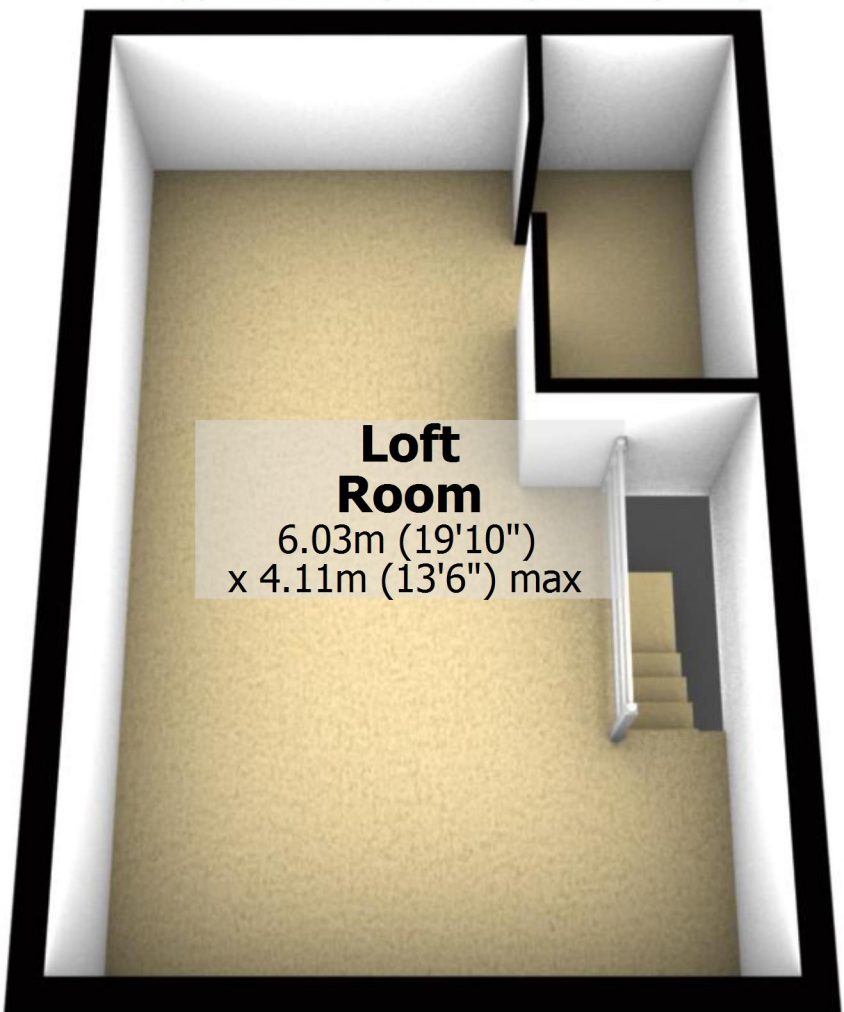
Storage

Bedroom 1
3.57m x 4.40m
(11'8" x 14'5")



Second Floor

Approx. 25.3 sq. metres (272.5 sq. feet)



Loft Room

6.03m (19'10")
x 4.11m (13'6") max